



Christian Street, London E1

Price £490 per week - Furnished







Description

A large studio apartment in the popular Hodgeson House, part of the Space E1 development.

Situated on the 1st floor, this spacious apartment is offered fully furnished and comprises reception area with open plan fitted kitchen, private balcony overlooking the courtyard, separate sleeping area with contemporary en-suite, wood flooring, and excellent storage.

The development benefits from an on-site gym and concierge, and is conveniently located for Shadwell DLR and Shadwell Overground stations (approximately 0.4 miles) in zone 2.

Council tax band: B. Rent is payable on a monthly basis, and you may be required to pay more than a month's rent in advance for tenancies with annual rents exceeding £100,000. You will be required to pay a 1 week holding deposit following a successful offer. Tenancies with annual rents up to £50,000 will require a 5 weeks' security deposit, while those exceeding this threshold will require a 6 weeks' deposit. Utility bills, council tax, telephone line and broadband are not included in the rent. As well as paying the rent, you may also be required to make some additional permitted payments. If your tenancy does not qualify as an APT, additional fees may apply. Please visit jll.co.uk/fees for details of fees that may be payable when renting a property. To check broadband and mobile phone coverage please visit Ofcom here ofcom.org.uk/phones-telecoms-and-internet/advice-for-consumers/advice/ofcom-checker

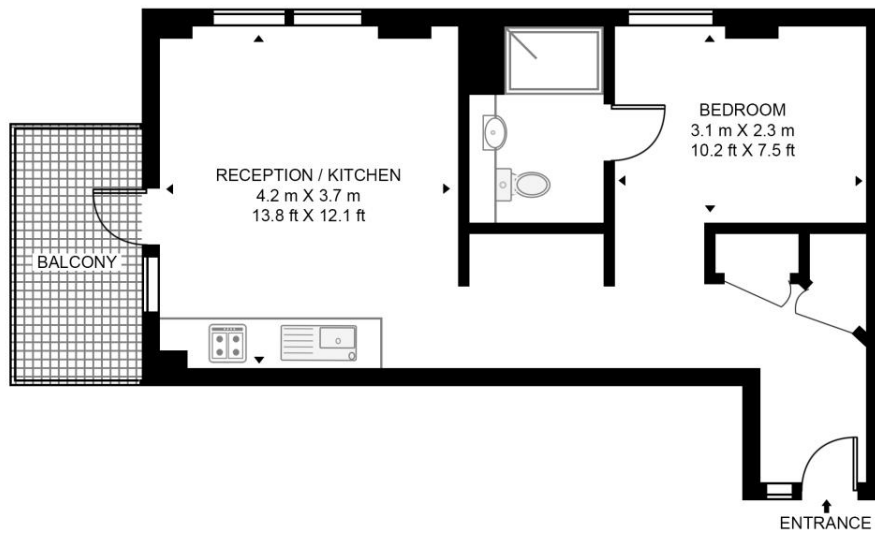
- Studio
- 1st Floor
- Private Balcony
- Concierge
- Gym
- 0.5 miles from Tower Gateway DLR
- Approx. 423 sq ft (39.3 sq m)
- Furnished
- EPC: B
- Council tax: Band B

Floorplan

423 sq ft | 39 sq m

HODGESON HOUSE

APPROXIMATE GROSS INTERNAL FLOOR AREA 423 SQ.FT (39.3 SQ.M)



FIRST FLOOR



This floor plan has been defined by the RICS Code of Measurement. This floor plan and all others are for approximate representative purposes only and upon usage is agreed to as such by the client.
WWW: hdvirtualart.com | TEL: 0203.974.1567 | EMAIL: info@hdvirtualart.com

City
25 Walbrook The Walbrook
Building,
London EC4N 8AF
+4420 7337 4000

Urban living, your way.

jll.co.uk/residential

© 2019 Jones Lang LaSalle IP, Inc. All rights reserved. All information contained herein is from sources deemed reliable; however, no representation or warranty is made to the accuracy thereof.

