



WHERE STANDARDS MATTER

Spencer Munson
128 High Road
Loughton IG10 4BE

Tel: 020 8502 2222

loughton@spencermunson.co.uk
Website: spencermunson.co.uk



Redgrave Court, Rollason Way, Brentwood, CM14

Spencer Munson is pleased to offer you this first floor two double bedroom apartment, situated within walking distance to Brentwood Station and High-street. The property is available on a part furnished basis with a spacious lounge, fitted kitchen with appliances, en-suite to master bedroom and a further family bathroom WC. Gas Central Heating and double glazed throughout. One Allocated Parking space. Available from the 8th July 2026. EPC Rating B Council Tax Band D

Rent: £1,595 - Monthly



Redgrave Court, Rollason Way, Brentwood, CM14

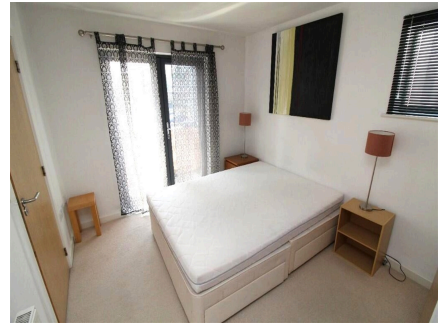
Reception 1



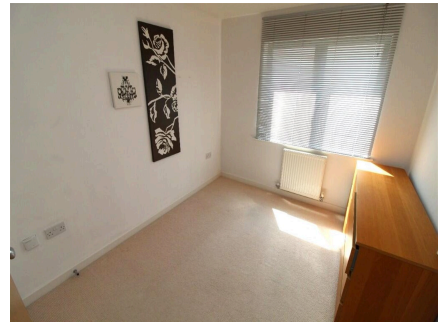
Kitchen



Bedroom 1



Bedroom 2



Bathroom 1



En suite



Parking

Central Heating

Double Glazing

Energy Efficiency Rating		
	Current	Potential
Very energy efficient - lower running costs		
92-100 A		
81-91 B	81	81
69-80 C		
55-68 D		
39-54 E		
21-38 F		
1-10 G		
Not energy efficient - higher running costs		
England & Wales	EU Directive 2002/91/EC	

Spencer Munson is pleased to offer you this first floor two double bedroom apartment, situated within walking distance to Brentwood Station and High-street. The property is available on a part furnished basis with a spacious lounge, fitted kitchen with appliances, en-suite to master bedroom and a further family bathroom WC. Gas Central Heating and double glazed throughout. One Allocated Parking space. Available from the 8th July 2026. EPC Rating B, Council Tax Band D.

Redgrave Court, Rollason Way, Brentwood, CM14

Disclaimer

These particulars are intended to give a fair and substantially correct overall description for the guidance of intending tenants/purchasers and do not constitute an offer or part of a contract. Prospective tenants/purchasers and/or lessees should seek their own professional advice. All descriptions, dimensions, reference to condition, fixtures, fittings and necessary permissions for use and occupation and other details are given in good faith and are believed to be correct. However, intending tenants/purchasers should not rely on them as statements or representations of fact, but must satisfy themselves by inspection or otherwise as to the correctness of each of them. Fixtures and fittings shown in pictures and on viewings may well not be included in any tenancy/sale and any prospective tenant/purchaser must clarify this for themselves. All measurements and floorplans are approximate and produced as a guide in good faith. Please note that some of the furniture and decor items shown in these images have been digitally added using AI technology for illustrative purposes. The actual property may differ in appearance. Prospective buyers or renters are encouraged to visit the property in person to get an accurate representation.