



Cavendish Gardens, SW4

£699,950

Dexters



Cavendish Gardens, SW4

This exceptional ground-floor mansion apartment is finished to a high and tasteful standard throughout, combining refined living with thoughtful design. Generous, light-filled interiors provide an ideal setting for both everyday comfort and stylish entertaining, complemented by access to a vast, beautifully maintained communal garden. Furniture has been added digitally.

The accommodation comprises a spacious, forward-facing reception room featuring a bay window, a character fireplace and bespoke alcove cabinetry, alongside a separate, well-equipped kitchen. There are three well-proportioned bedrooms, two of which benefit from fitted wardrobes, and two stylishly appointed bathrooms. Further benefiting from communal off-street parking, a long lease and no onward chain.

Trouville Road is a tree-lined residential road located in the Abbeville Village, an area renowned for its many local restaurants and boutique shops. Clapham Common and Clapham South station (Northern Line) are a short walk away.

Features

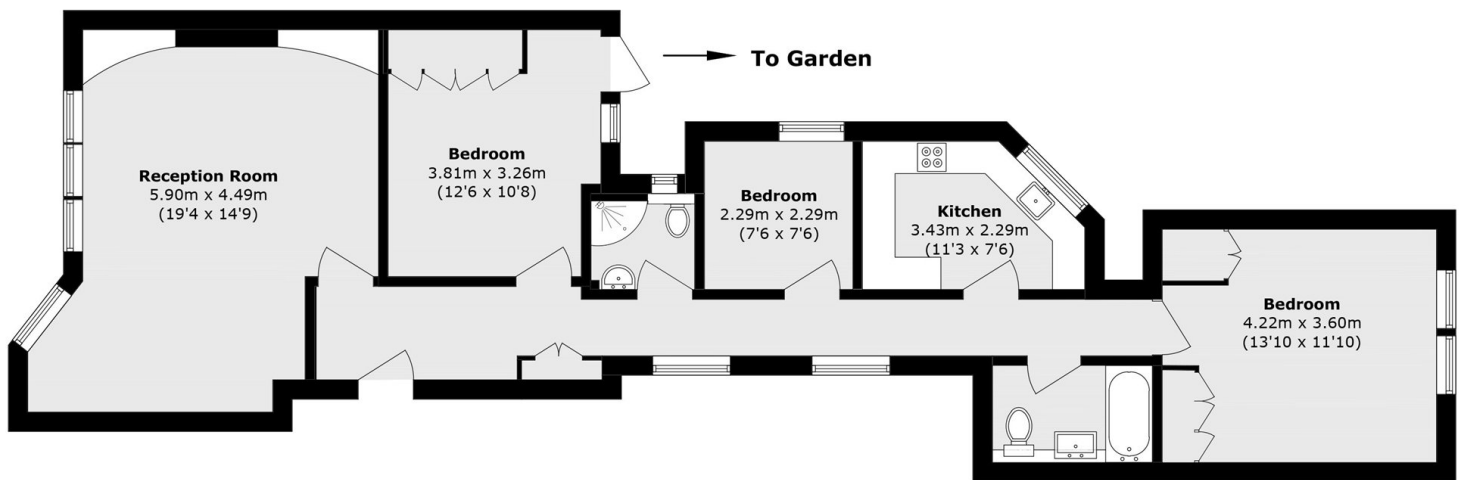
- Mansion Apartment
- Reception Room
- Separate Kitchen
- Three Bedrooms
- Two Bathrooms
- Communal Garden







Cavendish Gardens, London, SW4



Total area (approx.) 90.1 sq. m (970 sq. ft)