



ESTATE AGENT  
IN KENILWORTH

JULIE PHILPOT  
RESIDENTIAL



## 2 Gloster Drive | Kenilworth | CV8 2TU

£645,000

An individually designed detached and well planned bungalow providing spacious living within this small and exclusive development just off Manor Road within a short stroll of the old Hight Street, Abbey Fields, Castle and open countryside. The property benefits from a large living room with direct garden access, a kitchen/diner and two double bedrooms, the master with en-suite. Outside is an attractive and private rear garden, a garage and a covered car port.

- No Chain Involved
- Two Double Bedrooms, Master En-Suite
- Spacious, Well Planned Living
- Garage & Car Port



## Property Description

### **DOOR TO**

### **LARGE ENTRANCE HALL**

A generous and welcoming entrance to the property with original parquet flooring, inset matwell, smoke detector and access to roof storage space. Large built in double door cloaks storage cupboard and airing cupboard housing hot water cylinder and having fitted shelving. To the rear of the hallway is a door providing garden access.

### **LIVING ROOM**

20' 7" x 14' 0" (6.27m x 4.27m)

A large and airy reception room with dual aspects and also providing space for being used as a lounge/diner if preferred. Bay window to the front and French double doors to the rear providing direct garden access. Limestone feature fireplace with fitted gas fire.

### **KITCHEN/BREAKFAST ROOM**

13' 7" x 13' 7" (4.14m x 4.14m) 'L' Shaped Room

Having an extensive range of oak cupboard and drawer units with matching wall cupboards, bay window to the front, space for table and chairs and cupboard housing Vaillant gas boiler. Integrated Neff appliances to include four ring gas hob, extractor hood, wall mounted oven, built in microwave, dishwasher and washer/dryer. Radiator.

### **MASTER BEDROOM**

13' 7" x 12' 0" (4.14m x 3.66m)

With built in double door wardrobes, radiator and door to:

### EN-SUITE BATHROOM

Having a panelled bath, vanity wash basin with cupboard under, w.c., heated towel rail, shaver point, extractor fan and complementary tiling.

### DOUBLE BEDROOM TWO

11' 1" x 10' 3" (3.38m x 3.12m)

Having rear garden views, radiator and range of built in wardrobes.

### BATHROOM

With panelled bath, wash basin and w.c.  
Complementary tiling and heated towel rail.

### OUTSIDE

#### GARAGE

17' 9" x 9' 0" (5.41m x 2.74m)

Located to the rear of the property with electric up and over door, light, power and personal side entrance door.

#### CAR PORT

To the side of the garage is a covered car port providing additional parking.

### GARDENS

The front of the property has natural brick walling with shrubbery planting above with a few steps leading up to the front door. The private rear garden is attractive and relative low maintenance with an area of lawn, shrubbery border and sunny paved patio area. Gated access leads to the shared side driveway.



## Tenure

Freehold

## Council Tax Band

F

## Viewing Arrangements

Strictly by appointment

## Contact Details

**T:** 01926 257540

**E:** sales@juliephilpot.co.uk

**W:** www.juliephilpot.co.uk

### Energy rating and score

This property's energy rating is D. It has the potential to be C.

[See how to improve this property's energy efficiency.](#)



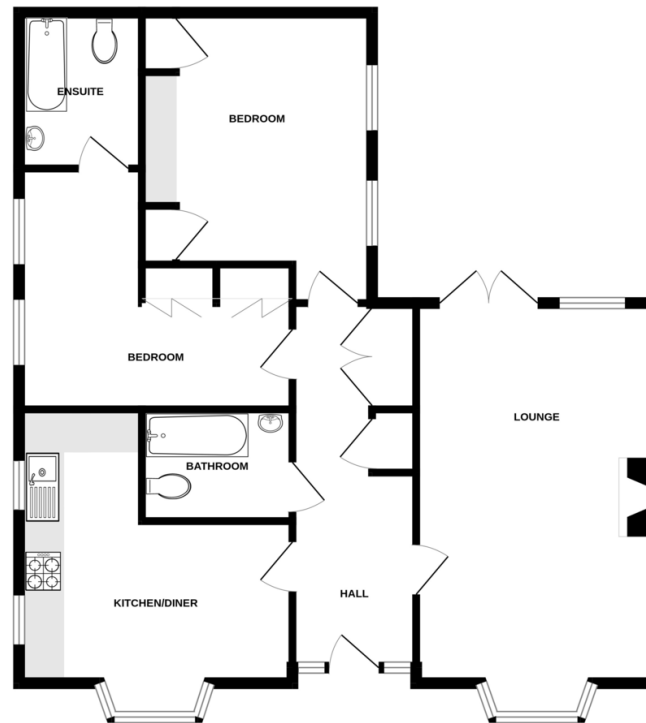
The graph shows this property's current and potential energy rating.

Properties get a rating from A (best) to G (worst) and a score. The better the rating and score, the lower your energy bills are likely to be.

For properties in England and Wales:

- the average energy rating is D
- the average energy score is 60

GROUND FLOOR  
880 sq.ft. (81.7 sq.m.) approx.



TOTAL FLOOR AREA: 880 sq.ft. (81.7 sq.m.) approx.  
Measurements are approximate. Not to scale. Illustrative purposes only.  
Made with Metrofix ©2020



Agents Note: Whilst every care has been taken to prepare these particulars, they are for guidance purposes only. All measurements are approximate and for general guidance purposes only and whilst every care has been taken to ensure their accuracy, they should not be relied upon and potential buyers/tenants are advised to recheck the measurements