



The Bank  
Scholar Green



£775



alsagerlettings@stephensonbrowne.co.uk

15 Crewe Road  
Alsager  
Stoke-On-Trent  
Staffordshire  
ST7 2EM

f StephensonBrowneAlsager



t @sbalsager



# 24 The Bank Scholar Green

## ST7 3LF

A beautifully presented two bedroom mid terrace property situated in the sought after location of Scholar Green.

The ground floor accommodation comprises a lounge with log burner, spacious dining room, modern fitted kitchen including integrated oven, induction hob and fridge freezer. A newly fitted three piece bathroom suite and ample storage. To the first floor are two double bedrooms benefitting fitted wardrobes to the master.

Externally, the property offers a generous sized garden paved with Indian Stone and off road parking to the rear. With open countryside close by and views over to Mow Cop Castle, this property boasts an idyllic semi rural location.

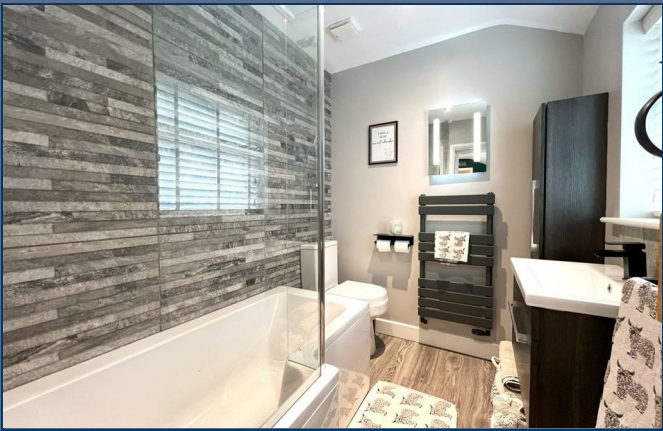
The Bank is conveniently located close to local amenities, great schools and good commuter links. Viewings are highly recommended to truly appreciate what this property has to offer! Available February 2026.

£775



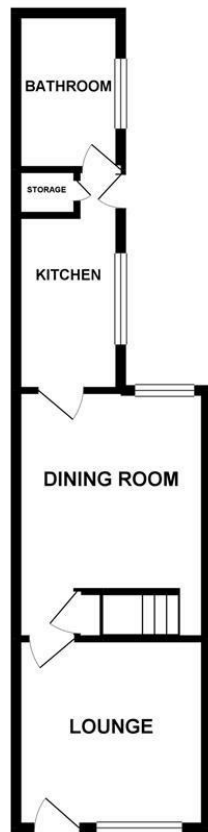


IMPORTANT INFORMATION

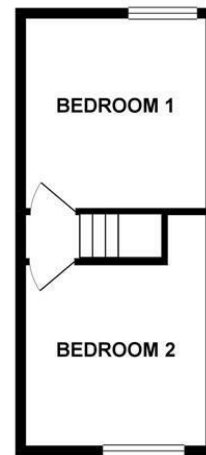




**GROUND FLOOR 35.06 sq. m.**  
( 377.36 sq. ft. )



**1ST FLOOR 23.77 sq. m.**  
( 255.90 sq. ft. )



**TOTAL FLOOR AREA : 58.83 sq. m. ( 633.27 sq. ft. ) approx.**

Whilst every attempt has been made to ensure the accuracy of the floorplan contained here, measurements of doors, windows, rooms and any other items are approximate and no responsibility is taken for any error, omission or mis-statement. This plan is for illustrative purposes only and should be used as such by any prospective purchaser. The services, systems and appliances shown have not been tested and no guarantee as to their operability or efficiency can be given.  
Made with Metropix 42024

# Stephenson Browne Estate Agents

**Newcastle**  
56 Merrial Street, Newcastle under Lyme  
Staffordshire, ST5 2AJ  
Tel: 01782 625734

**Sandbach**  
38 High Street, Sandbach  
Cheshire, CW11 1AN  
Tel: 01270 763200

**Alsager**  
13 Crewe Road, Alsager  
Stoke on Trent, ST7 2EW  
Tel: 01270 883130

**NOT TO SCALE** These floor plans are given as a guide only. Full completed measurements and details should be verified by any intending purchasers legal representative.

**NOTICE:** Stephenson Browne for themselves and for the vendors or lessors of this property whose agents they are give notice that: (1) the particulars are set out as a general guideline only for the guidance of intending purchasers or lessees, and do not constitute, nor constitute part of, an offer or contract; (2) all descriptions, dimensions, references to condition and necessary permissions for use and occupation, and other details are given in good faith and are believed to be correct but any intending purchasers or tenants should not rely on them as statements or representations of fact but must satisfy themselves by inspection or otherwise as to the correctness of each theme; (3) no person in the employment of Stephenson Browne has any authority to make representation or warranty whatever in relation to this property. (4) fixtures & fittings are subject to a formal list supplied by the vendors solicitors.