



43 Magna Road, Egham, TW20 0PN

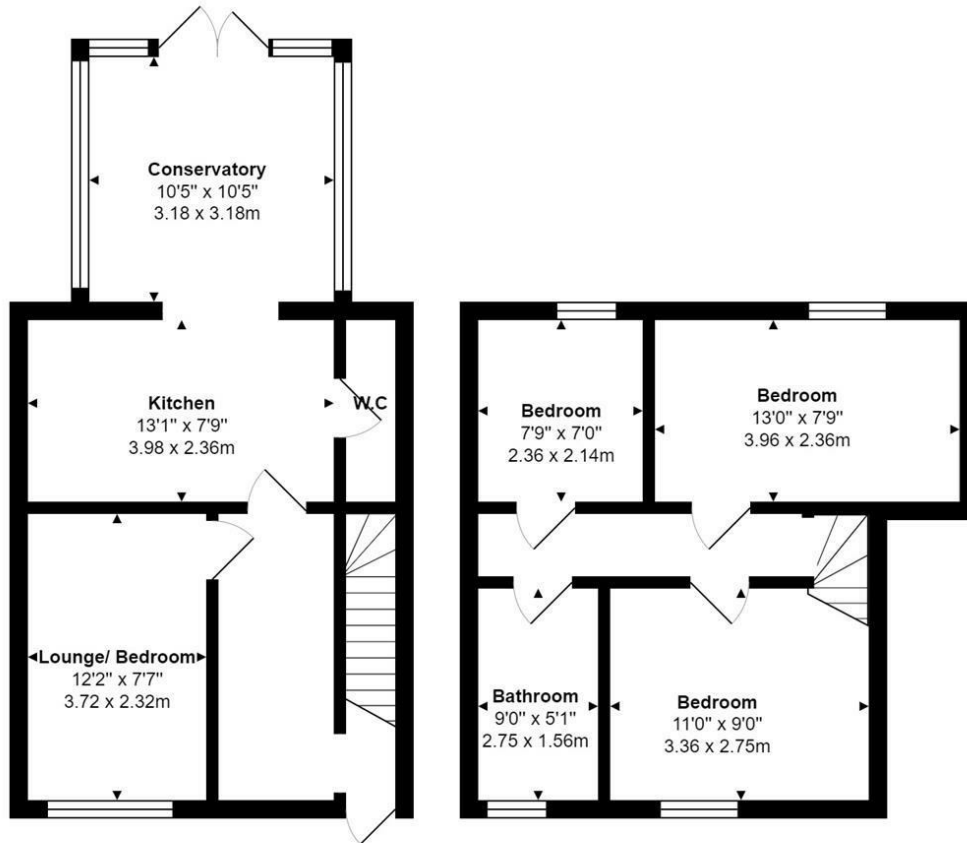
£2,500 Per Calendar Month

43 Magna Road, Egham, TW20 0PN

A four bedroom student house with a good size kitchen, a conservatory living room, upstairs bathroom and a downstairs w.c. There is a gas central heating system to radiators, double glazed windows, off road parking for two cars, rear garden and the benefit of all bedrooms being an equal size and just a 10-12 minute walk from Royal Holloway University. EPC rating E



Floor Plan



Features

- Student Let
- Four Bedrooms
- Garden
- 10-12 minute walk to University
- Conservatory
- Off Road Parking





CLAPPERBOARD
SCENE TAKE ROLL
DATE
PROD. CO.
DIRECTOR
CAMERAMAN

MORRIS

A
ASPEN
SALES & LETTINGS