



Chalcot Crescent

Primrose Hill, NW1

£15,000 per month
(£3,461.54 per week)

This stunning four double bedroom End of Terrace House is situated with in this highly desirable Chalcot Crescent of Primrose Hill. The property comprises; dual-aspect reception room, eat-in kitchen, four bedrooms and three bathrooms.

CHESTERTONS



Chalcot Crescent

Primrose Hill, NW1

- Corner House On This Sought After Crescent
- Heart Of Primrose Hill
- Moments From The Village & Park
- Four Bedrooms
- Three Bathrooms
- Ample Living Space



This stunning four double bedroom End of Terrace House is situated with in this highly desirable Chalcot Crescent of Primrose Hill. The property comprises; dual-aspect reception room, eat-in kitchen sensational master bedroom suite, three further bedrooms and three bathrooms.

This impressive house further benefits; wooden flooring, spacious eat-in kitchen/diner, patio garden, period features and spacious accommodation throughout. The property is offered furnished and available NOW.

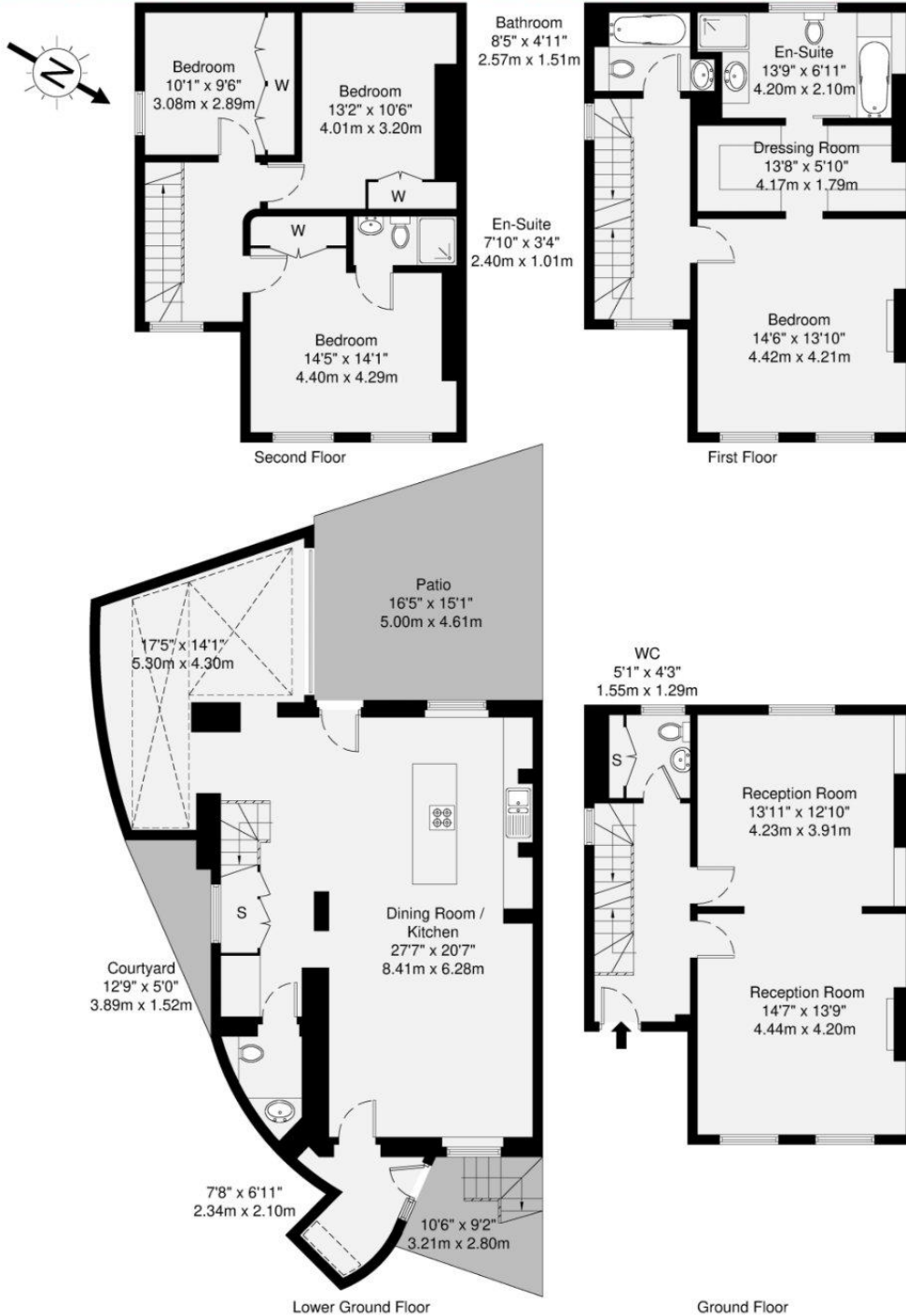
Chalcot Crescent is ideally situated moments from all the amenities

Minimum Term: 12 months
Deposit Required: £20,769.23
Local Authority: Camden
Council Tax Band: H
EPC Rating: E
Furnished, Part Furnished, Unfurnished

Chestertons Camden & Primrose Hill Lettings

99-101 Parkway
London
NW1 7PP
camdentownlettingsusers@chestertons.co.uk
02072673574
chestertons.co.uk

Additional tenant charges apply (fees apply to non-AST tenancies only)
Tenancy Agreement Fee: £300
References per Tenant/Guarantor: £60
Inventory check (approx. £100 – £250 inc. VAT)
chestertons.co.uk/property-to-rent/applicable-fees



GROSS INTERNAL AREA (GIA)
The footprint of the property
224.5 sq m / 2416 sq ft

TOTAL STORAGE SPACE
Storage and wardrobe total area
5.5 sq m / 59 sq ft

EXTERNAL FEATURES
Garden, Balcony, Terrace, Verandah etc.
37.9 sq m / 407 sq ft

RESTRICTED HEAD HEIGHT
Limited use area under 1.5m
0.0 sq m / 0.0 sq ft

Disclaimer : Floorplan measurements are approximate and are for illustrative purposes only. While we do not doubt the floorplan accuracy and completeness, you or your advisors should conduct a careful, independent investigation of the property in respect of monetary valuation.

Maison VUE

