

estate agents **auctioneers**

**hollis
morgan**



FFF, 25 Meridian Place, Clifton, Bristol, BS8 1JL

Offers In Excess Of £235,000

A well presented first floor Georgian apartment with generous proportions and potential.

- First Floor Apartment
- Period Details
- Convenient Location
- Basic Cosmetic Updating Required
- Gas Central Heating
- No Onward Chain

The Property

Set within an elegant Georgian Grade II listed building, this charming first-floor one-bedroom apartment effortlessly combines period character with modern comfort. Boasting high ceilings, large sash windows, and an abundance of natural light throughout, the property offers a spacious and inviting atmosphere.

The well-proportioned living room provides an ideal space for relaxing or entertaining with impressive bay window to rear, while the separate fitted kitchen is thoughtfully designed with ample storage and workspace. The generous double bedroom enjoys a pleasant outlook over the neighbouring properties and is complemented by a stylish bathroom.

Location

Clifton is one of the most unique and sought after locations in the City. From its very early days as a Spa destination to the later Georgian and Victorian influences Clifton offers charm at every turn from the fine sweep of Royal York Crescent to the grandeur of Victoria Square. At its heart lies the picturesque "Village" offering an eclectic range of independent shops, boutiques, cafes, bars and restaurants including Cote, The Ivy and the Avon Gorge Hotel. The Downs offers four hundred acres of green public space whilst Brunel's Clifton Suspension Bridge provides a gateway to the Ashton Court Estate with its woodlands, mountain bike trails and walks whilst there is excellent access to the exciting Harbourside district, the City Centre and Temple Meads.

Further Information

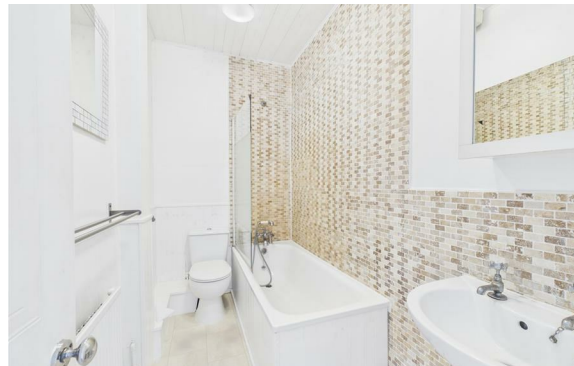
Share of freehold - 999 year lease from May 1985

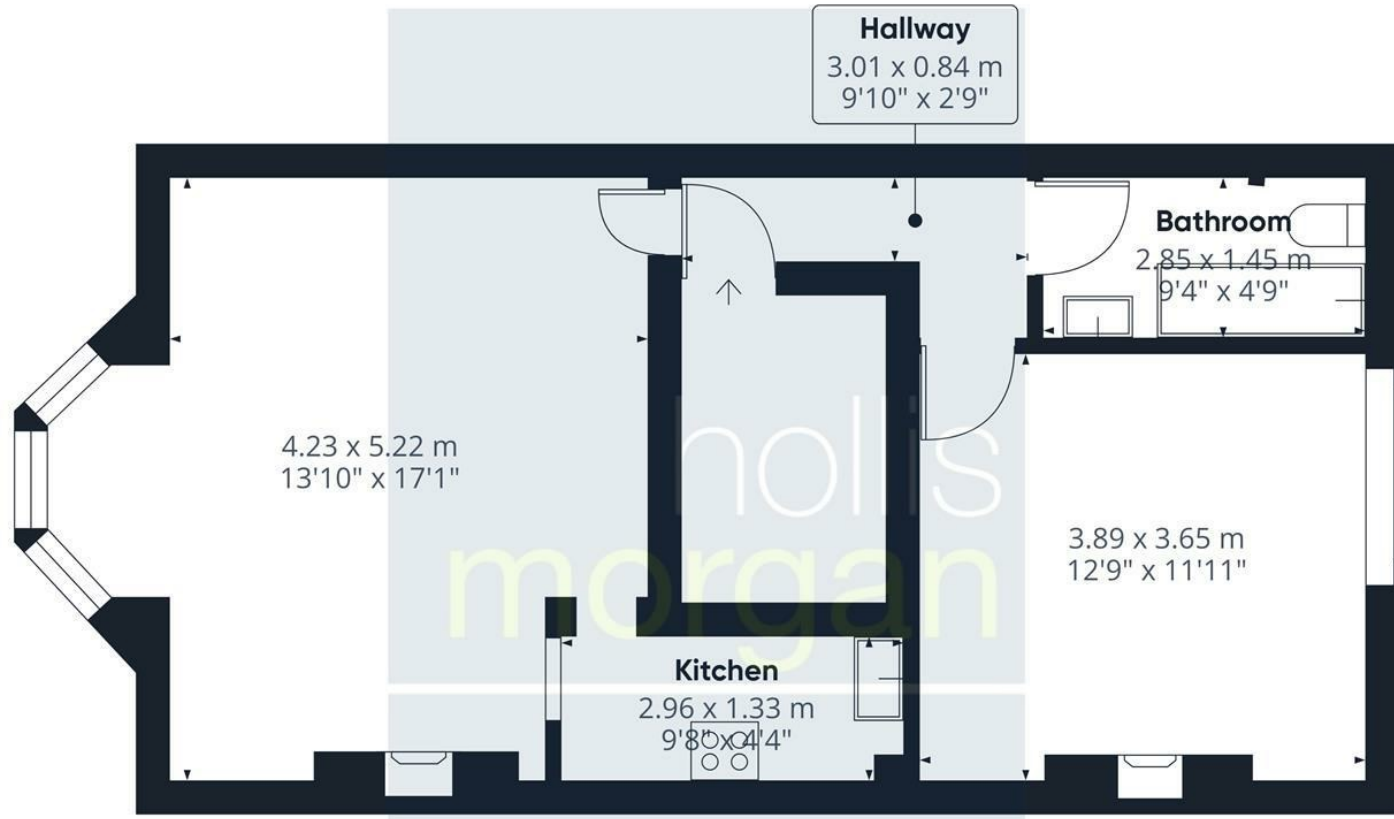
Management fee - £113 pcm

Council tax: B

Please Note

Hollis Morgan endeavour to make our sales details clear, accurate and reliable in line with the Consumer Protection from Unfair Trading Regulations 2008 but they should not be relied on as statements or representations of fact and they do not constitute any part of an offer or contract. All Hollis Morgan references to planning, tenants, boundaries, potential development, tenure etc is to be superseded by the information provided in your solicitors enquiries. It should not be assumed that this property has all the necessary Planning, Building Regulation or other consents. Any services, appliances and heating system(s) listed may not been checked or tested and you should rely on your own investigations. The seller does not make any representation or give any warranty in relation to the property and we have no authority to do so on behalf of the seller. Please note that in some instances the photographs may have been taken using a wide angle lens.





Approximate total area^m
 47.7 m²
 513 ft²

(1) Excluding balconies and terraces

Calculations reference the RICS IPMS 3C standard. Measurements are approximate and not to scale. This floor plan is intended for illustration only.

GIRAFFE360

TEL | 0117 933 9522 | 9 Waterloo Street, Clifton, Bristol BS8 4BT

www.hollismorgan.co.uk | post@hollismorgan.co.uk
 Hollis Morgan Property Limited, registered in England, registered no 7275716
 Registered address, 5 Upper Belgrave Road, Clifton, Bristol BS8 2XQ

Energy Efficiency Rating	
Current	Potential
Very energy efficient - lower running costs	
(92 plus) A	
(81-91) B	
(69-80) C	
(55-68) D	
(39-54) E	
(21-38) F	
(1-20) G	
Not energy efficient - higher running costs	
77	82
England & Wales	EU Directive 2002/91/EC

Environmental Impact (CO ₂) Rating	
Current	Potential
Very environmentally friendly - lower CO ₂ emissions	
(92 plus) A	
(81-91) B	
(69-80) C	
(55-68) D	
(39-54) E	
(21-38) F	
(1-20) G	
Not environmentally friendly - higher CO ₂ emissions	
England & Wales	EU Directive 2002/91/EC

hollis
morgan
