



39 Gunthorpe Road, Peterborough
£270,000

 **NEWTON FALLOWELL**

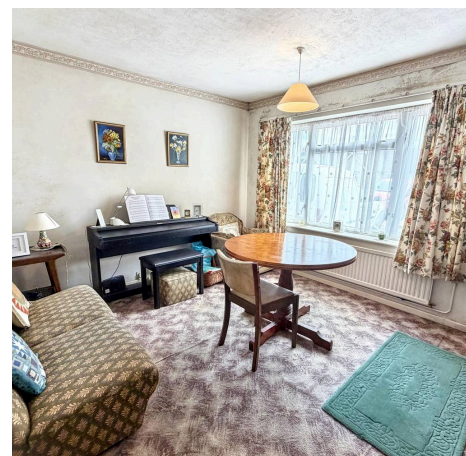
39 Gunthorpe Road

Gunthorpe, Peterborough

This DETACHED BUNGALOW offers THREE WELL-PROPORTIONED BEDROOMS, a GARAGE and is being sold with NO ONWARD CHAIN. The property is arranged across a single storey, providing ease of access throughout, with the entrance hall providing access to bright and airy living room to the rear, which benefits from a large window that overlooks the rear garden. The kitchen is also found to the rear and has been thoughtfully designed with ample cupboard storage and room for essential appliances, as well as a further window offering a pleasant garden view with side external access. The bedrooms are bright and airy, with one of the bedrooms hosting built-in storage, whilst the family bathroom maintains a traditional style with a bath-tub, pedestal sink, and toilet, complemented by built-in storage. The rear garden is well-maintained with a lawn and shrubs that create a private and tranquil setting, whilst offering a patio seating area and side gated access. A detached garage provides additional storage, with the gravel driveway accommodating convenient driveway parking for multiple vehicles. The low-maintenance front garden, designed with decorative gravel and shrubs, enhances the property's kerb appeal and offers minimal upkeep.

Council Tax band: C

Tenure: Freehold





Entrance Hall

Lounge

12' 7" x 12' 0" (3.83m x 3.65m)

Kitchen

13' 1" x 9' 7" (3.98m x 2.93m)

Dining Room/Bedroom 3

11' 11" x 11' 1" (3.62m x 3.37m)

Bedroom 1

12' 9" x 12' 0" (3.89m x 3.65m)

Bedroom 2

11' 9" x 8' 11" (3.59m x 2.73m)

Bathroom

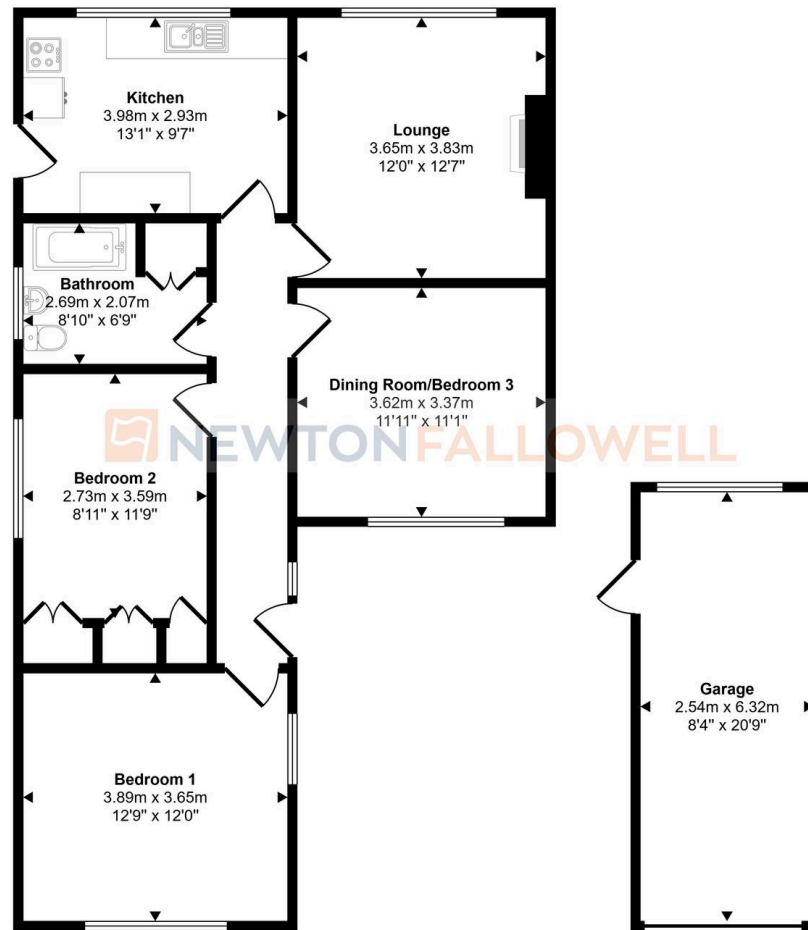
8' 10" x 6' 9" (2.69m x 2.07m)

Garage

20' 9" x 8' 4" (6.32m x 2.54m)



Approx Gross Internal Area
96 sq m / 1036 sq ft



Floorplan
Approx 80 sq m / 863 sq ft

Garage
Approx 16 sq m / 173 sq ft

This floorplan is only for illustrative purposes and is not to scale. Measurements of rooms, doors, windows, and any items are approximate and no responsibility is taken for any error, omission or mis-statement. Icons of items such as bathroom suites are representations only and may not look like the real items. Made with Made Snappy 360.

Newton Fallowell - Peterborough

Newton Fallowell Estate Agents, 11 Skaters Way - PE4 6NB

01733 511225 · peterborough@newtonfallowell.co.uk · newtonfallowell.co.uk/peterborough