



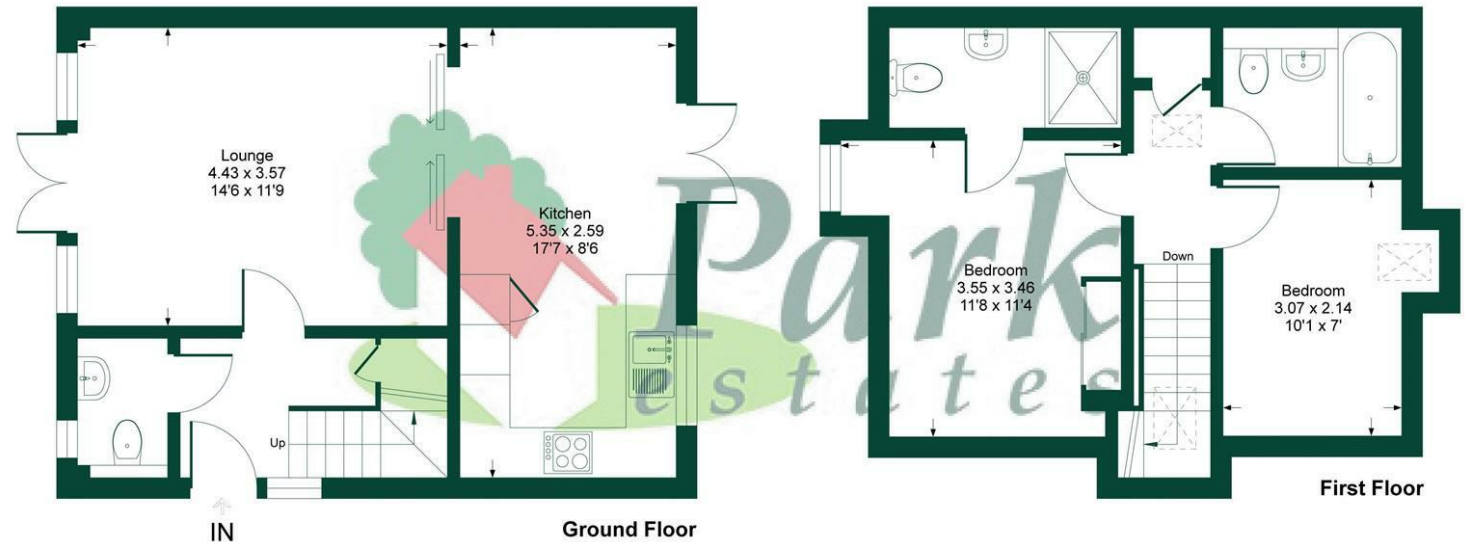
129, Wansunt Road, Bexley DA5 2DN  
Guide Price £400,000



Situated in a small exclusive development in this much sought after location near to Bexley Village, convenient bus routes and transport links, we are delighted to offer 'The Coach House' which has its own entrance and offers very nice living space over two levels. With accommodation comprising on the ground floor of cloakroom, living room and a kitchen / diner with double doors leading to courtyard style / communal gardens, and to the first floor two good sized bedrooms - one with an ensuite, and a bathroom. Built in 2006, the property has been newly decorated and benefits from double glazing, new carpets, gas central heating, lovely grounds, allocated parking and an unexpired lease of approximately 105 years. Offered with no forward chain your early viewing would be very highly recommended.

## Wansunt Road, DA5

Approximate Gross Internal Area = 70 sq m / 755 sq ft



Local Authority: London Borough of Bexley  
Council Tax Band: E



This plan is for layout guidance only. Not drawn to scale unless stated. Windows and door openings are approximate. Whilst every care is taken in the preparation of this plan, please check all dimensions, shapes and compass bearings before making any decisions reliant upon them.  
Produced by Planpix

# 01322 553322

60-62 High Street, Bexley, Kent DA5 1AH

bexley@parkestates.co.uk  
www.parkestates.co.uk

Every care has been taken with the preparation of details, but accuracy is in no way guaranteed. These particulars do not constitute a contract and are issued and accepted on the express understanding that all negotiations will be conducted through Park Estates. The seller does not make or give, nor do we or our employees have any authority to give a representation or warranty in relation to the property. Please contact this office before viewing the property. If there is any point which is of particular importance to you, we will be pleased to check the information for you and confirm that the property remains available. This is particularly important if you are contemplating travelling some distance to view the property. We would strongly recommend that all the information that we provide about the property is verified by yourself on inspection and also by your conveyancer, especially where statements have been made by us to the effect that the information provided by us has not been verified.