



Freehold / House - Terraced

Cranmer Avenue

£795,000

A well-presented two-bedroom house situated on the ever-popular Cranmer Avenue in Northfields. The property offers bright and spacious accommodation throughout, complemented by the added benefit of off-street parking and a private rear garden.

- Two bedrooms, one bathroom
- Catchment for outstanding local schools
- Very well presented throughout
- South facing garden
- Off-street parking



Freehold / House - Terraced

Cranmer Avenue, W13 9SH

£795,000

The ground floor features a generous living space with an opening leading to the kitchen. Doors from both the kitchen and living room lead to low maintenance South-facing garden. Upstairs, there are two double bedrooms and a bathroom.

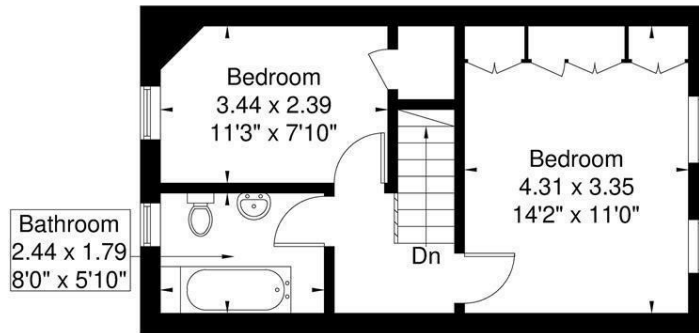
Positioned just moments from Northfield Avenue's vibrant selection of shops, cafés and restaurants, the property is also within easy walking distance of Northfields Underground Station (Piccadilly Line), West Ealing Station (Elizabeth line) and the beautiful open spaces of Lammas Park.

Cranmer Avenue is renowned for its attractive Edwardian and period homes and is particularly popular with families due to its close proximity to highly regarded local schools, including the much sought-after Fielding Primary School. Also close by, are other outstanding local schools, such as Elthorne park high and Ealing Fields.

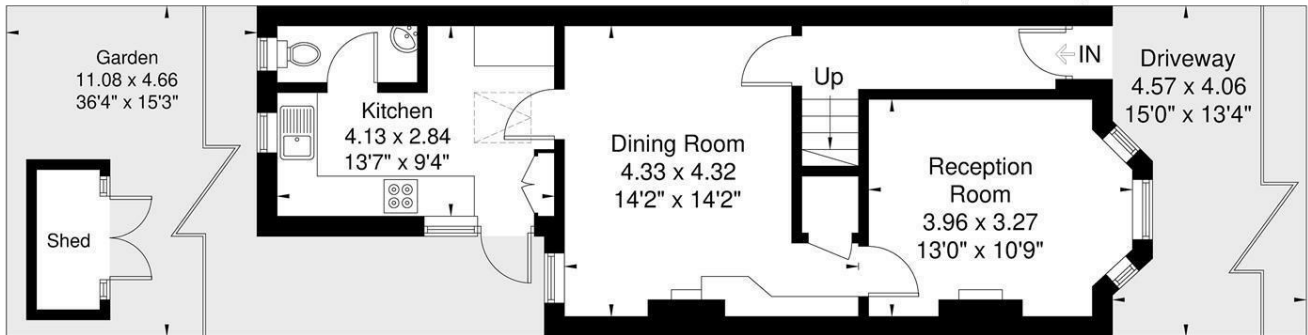


Cranmer Avenue

Approximate Gross Internal Area = 82.5 sq m / 887 sq ft



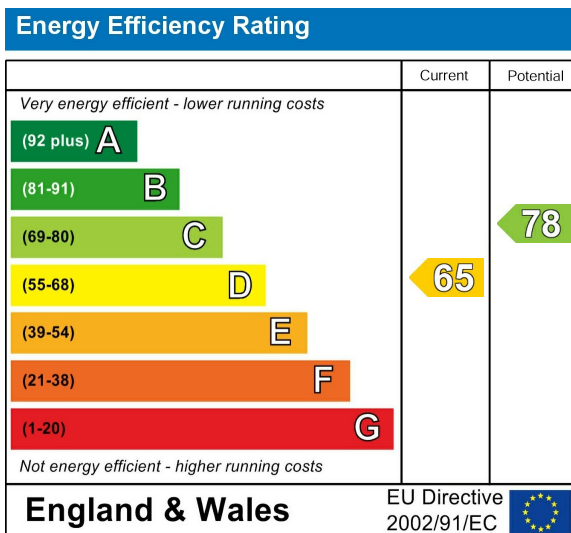
First Floor
34.5 sq m / 371 sq ft



Ground Floor
48 sq m / 516 sq ft

Although every attempt has been made to ensure accuracy, all measurements are approximate. The floorplan is for illustrative purposes only and not to scale.
© www.perspective.co.uk

Energy Performance Graph



Call us on

020 8840 5151

northfieldsales@sintonandrews.co.uk

www.sintonandrews.co.uk

Agents Note: Whilst every care has been taken to prepare these particulars, they are for guidance purposes only. All measurements are approximate and are for general guidance purposes only and whilst every care has been taken to ensure their accuracy, they should not be relied upon and potential buyers are advised to recheck the measurements.