

PARSONS
COMPANY



3 Birchams Yard Norwich Road, Reepham, Norwich, NR10 4JN
£240,000



3 Birchams Yard Norwich Road, Reepham, Norwich, NR10 4JN

£240,000

This spacious three-storey house offers a wonderful opportunity for buyers seeking a home full of character and potential.

Brimming with character, the ground floor features a welcoming living room complete with a delightful fireplace, creating a cosy focal point ideal for relaxing evenings. The kitchen, with a dining area, provides a practical and sociable space, perfect for family meals or entertaining guests.

On the first floor, the property boasts two double bedrooms, along with a bathroom suite.

On the second floor, the home further benefits from two bedrooms, offering flexibility for growing families, home working, or guest accommodation.

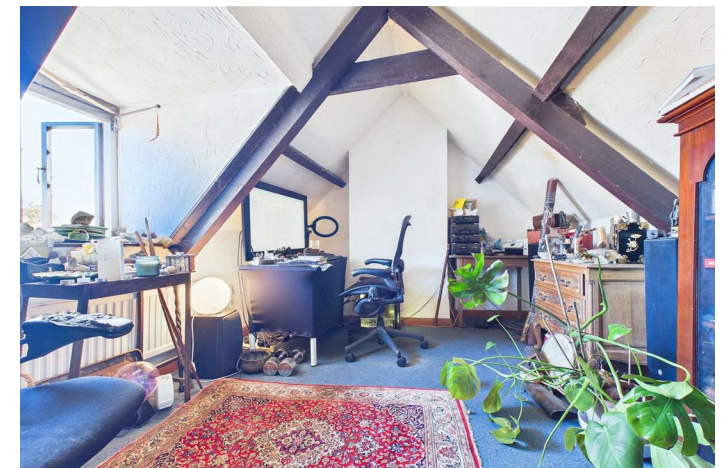
Situated in a popular and convenient location, the cottage is within easy reach of local amenities, shops, and transport links, making it an ideal choice for both families and commuters.

Offered to the market with no onward chain, this charming home represents a fantastic opportunity to create a truly special residence.

Description



Situation



null

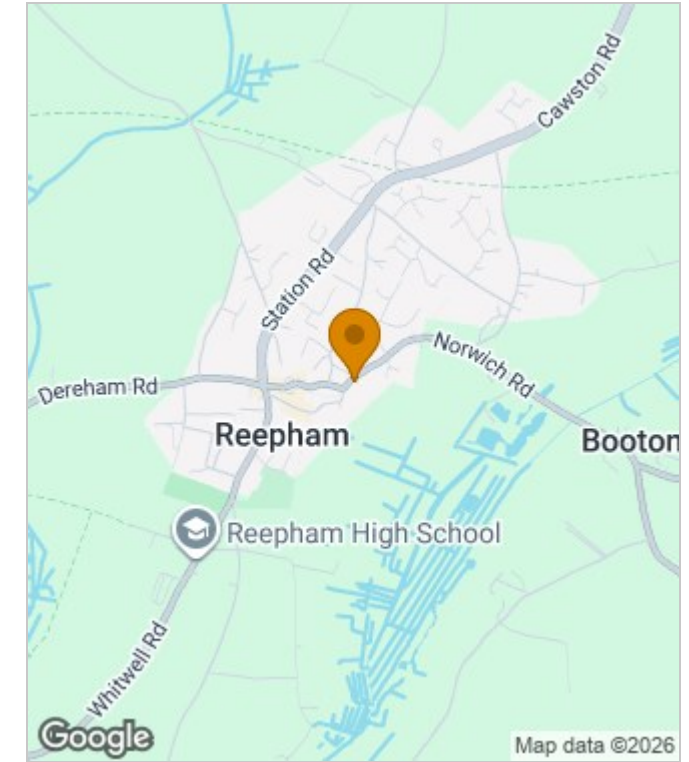
Council Tax Band: C

Available:

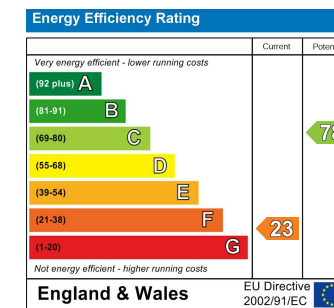
Floor Plans



Area Map



Energy Performance Graph



These particulars, whilst believed to be accurate are set out as a general outline only for guidance and do not constitute any part of an offer or contract. Intending purchasers should not rely on them as statements of representation of fact, but must satisfy themselves by inspection or otherwise as to their accuracy. No person in this firm's employment has the authority to make or give any representation or warranty in respect of the property.