



Guide Price
£295,000

Freehold

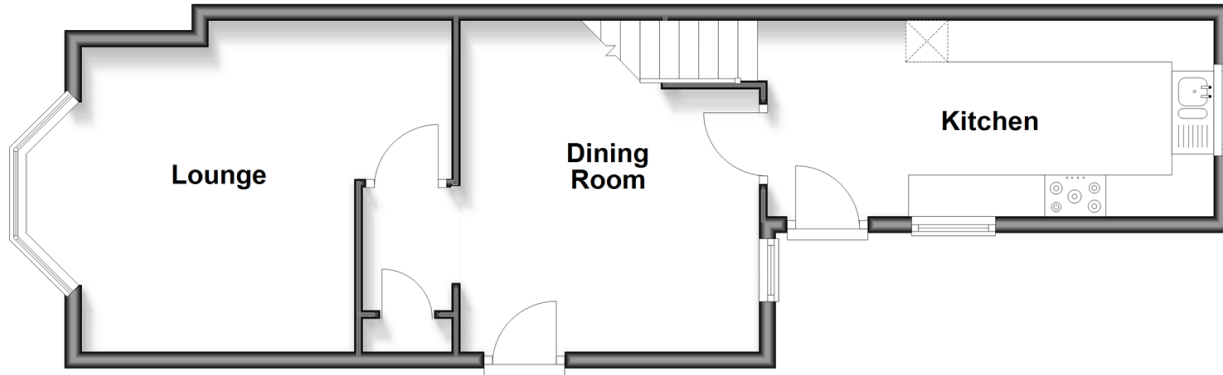
3x  1x  2x 

**Byron Road, Gillingham,
Kent, ME7**

Wards
Helping you move forwards

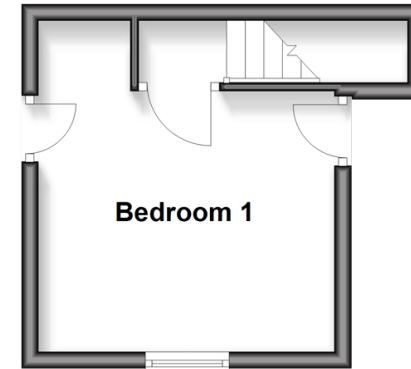
Split Level Ground Floor

Approx. 45.0 sq. metres (484.6 sq. feet)



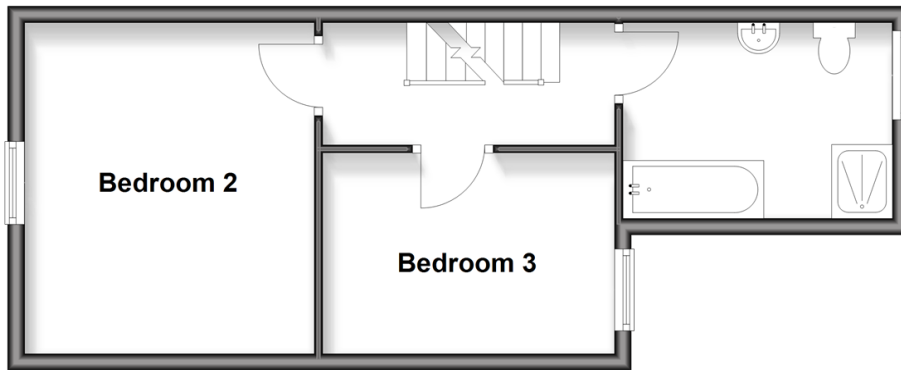
Second Floor

Approx. 14.8 sq. metres (159.3 sq. feet)



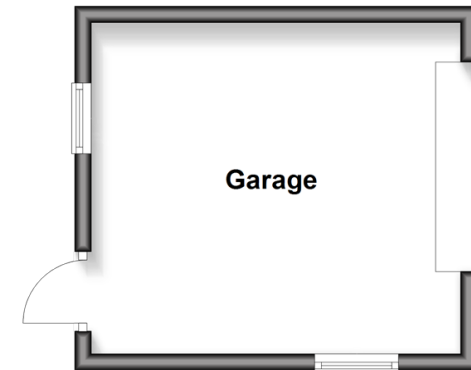
Split Level First Floor

Approx. 36.0 sq. metres (387.7 sq. feet)



Outbuilding

Approx. 18.0 sq. metres (193.7 sq. feet)



Accommodation

SPLIT LEVEL GROUND FLOOR

Dining Room: 13'5 x 11'7 (4.09m x 3.53m)

Kitchen: 17'5 x 7'8 (5.31m x 2.34m)

Lounge: 14'8 x 13'5 (4.47m x 4.09m)

SPLIT LEVEL FIRST FLOOR

Landing

Bedroom 2: 11'6 x 10'3 (3.51m x 3.13m)

Bedroom 3: 11'6 x 8'0 (3.51m x 2.44m)

Bathroom

SECOND FLOOR

Landing

Bedroom 1: 13'3 x 11'3 (4.04m x 3.43m)

OUTBUILDING

Garage: 14'9 x 13'3 (4.50m x 4.04m)

OUTSIDE

Rear Garden



Main features

- Victorian end of terrace house with separate upstairs bathroom
- Gas central heating and double glazing
- Chain free
- Comes with the extremely rare benefit of a large garage in the rear garden
- Close to Medway Maritime hospital



Nearest Schools

Primary Schools: Byron Primary 0.1 miles, Luton Junior School 0.4 miles, All Saints C of E Primary, Chatham 0.4 miles



Transport Information

Train Stations: Gillingham 1.0 miles, Chatham 2.1 miles, Rochester 2.3 miles



Address

Byron Road, Gillingham, Kent, ME7



Directions

For directions to this property please contact us.



Wards
Helping you move forwards

Call Gillingham Branch 01634 851191 ■ wardsofkent.co.uk



■ Legal advice should be taken to verify fixtures/fittings, planning, alterations and/or lease details ■ Appliances & services are untested, dimensions are approximate and floor plans are not to scale



10927370/20260114/ML/GS