



45 Cowley Meadow Way Crick, Northampton, NN6 7TY

An exceptional, FOUR DOUBLE BEDROOM, detached family home, beautifully presented throughout and offering spacious, versatile accommodation across three impressive floors, perfectly positioned within the highly desirable village of Crick.

Occupying an attractive corner plot, this superb home combines stylish contemporary living with outstanding practicality.

Outside, a tandem driveway leads to a PART CONVERTED GARAGE with power and lighting, creating the ideal space for a home office, beauty salon, treatment room or gym, while still retaining useful storage.

To the rear, the landscaped enclosed garden has been thoughtfully designed with lawn and decked entertaining areas, providing the perfect setting for relaxing or hosting family and

Offers over £400,000

45 Cowley Meadow Way

Crick, Northampton, NN6 7TY



- Stunning detached family home in a highly sought-after village location.
- Bright dual-aspect living room ideal for family living.
- Landscaped rear garden with lawn and decked entertaining area.
- Excellent local amenities, highly regarded schools and easy access to Junction 18 of the M1.
- Four generous double bedrooms across three spacious floors.
- Principal bedroom with en-suite shower room.
- Part-converted garage ideal as a home office, salon or treatment room.
- Spacious open-plan kitchen/dining room with integrated appliances.
- Jack & Jill en-suite serving the top-floor bedrooms.
- Tandem driveway, gas central heating and double glazing.

Entrance Hall

Lounge

15'6" x 10'5" (4.74 x 3.18)

Dining Room

13'11" x 8'4" (4.25 x 2.55)

Kitchen

13'10" x 7'3" (4.22 x 2.23)

Bedroom One

10'11" x 10'4" (3.35 x 3.15)

En-Suite

7'4" x 4'7" (2.26 x 1.42)

Bedroom Four

10'5" x 9'8" (3.19 x 2.97)

Family Bathroom

6'7" x 6'2" (2.03 x 1.89)

Bedroom Two

13'3" x 11'6" (4.06 x 3.53)

En-Suite

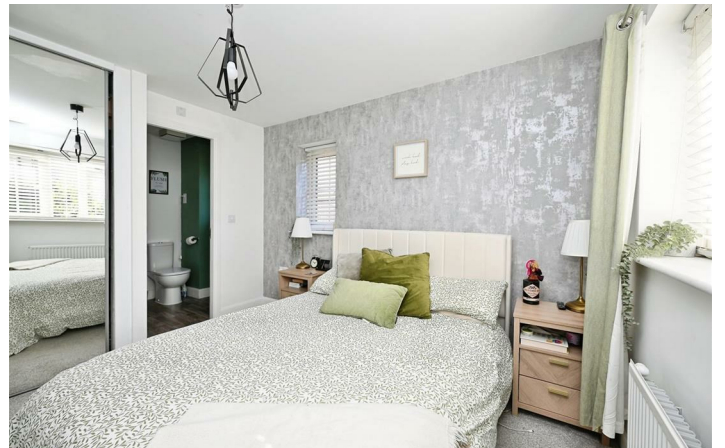
6'7" x 4'8" (2.03 x 1.43)

Bedroom Three

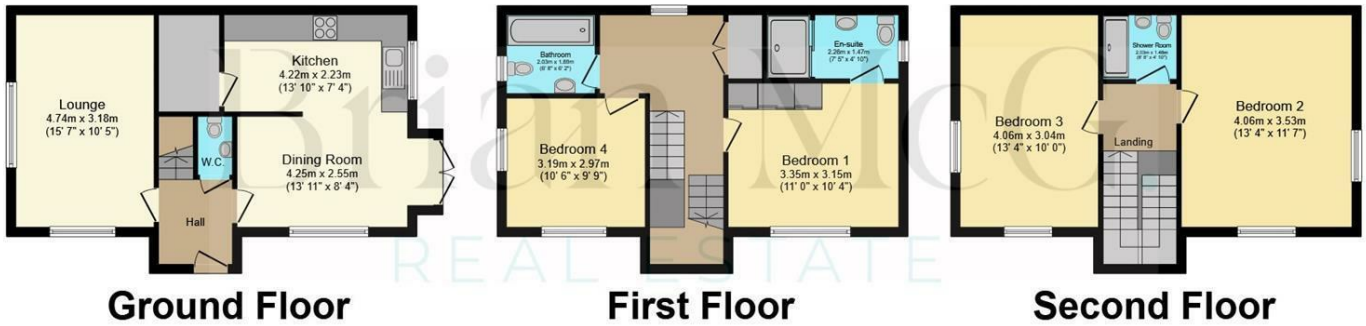
13'3" x 9'11" (4.06 x 3.04)



[Directions](#)



Floor Plan



Total floor area 137.1 sq.m. (1,476 sq.ft.) approx

This plan is for illustration purposes only and may not be representative of the property. Plan not to scale. Powered by PropertyBox

These particulars, whilst believed to be accurate are set out as a general outline only for guidance and do not constitute any part of an offer or contract. Intending purchasers should not rely on them as statements of representation of fact, but must satisfy themselves by inspection or otherwise as to their accuracy. No person in this firm's employment has the authority to make or give any representation or warranty in respect of the property.

