



123 Alex Wood Road
Cambridge, CB4 2EJ
Guide price £350,000

123 Alex Wood Road

Cambridge, CB4 2EJ

- Two double bedrooms
- No chain
- Good size rear extension

An extended 2-bedroom end-of-terrace house requiring some improvement.

This 900 sq. ft, end of terrace has a good-sized rear extension and no chain.

There is a good-sized living room, with a gas fire and a large window to the front aspect. The extension provides a large dining room or family room, which has double doors to the rear garden. The kitchen has been improved and has base and eye-level units and an oven, hob and extractor. A spacious entrance hall completes the ground floor.

Upstairs, there are two double bedrooms, one with built-in storage. The bathroom needs updating, but has a bath, basin and a WC.

The house has double glazing and gas central heating with a combination boiler.

The house is set back from the road and has a front garden. Pedestrian access leads to the rear garden, which is small and

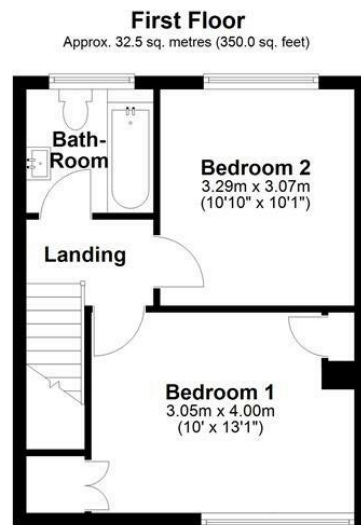
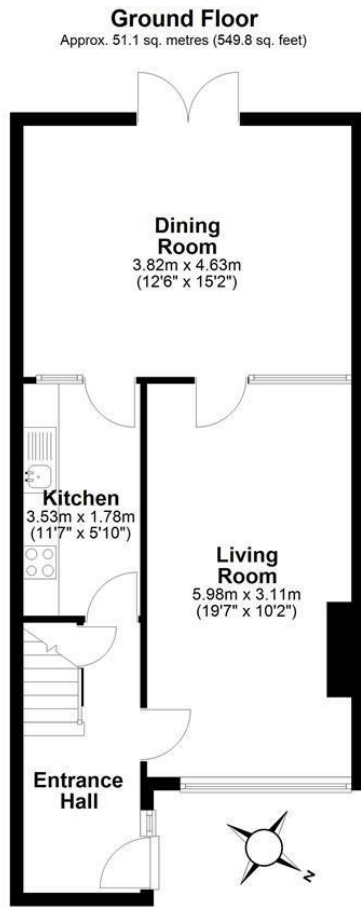




low-maintenance.

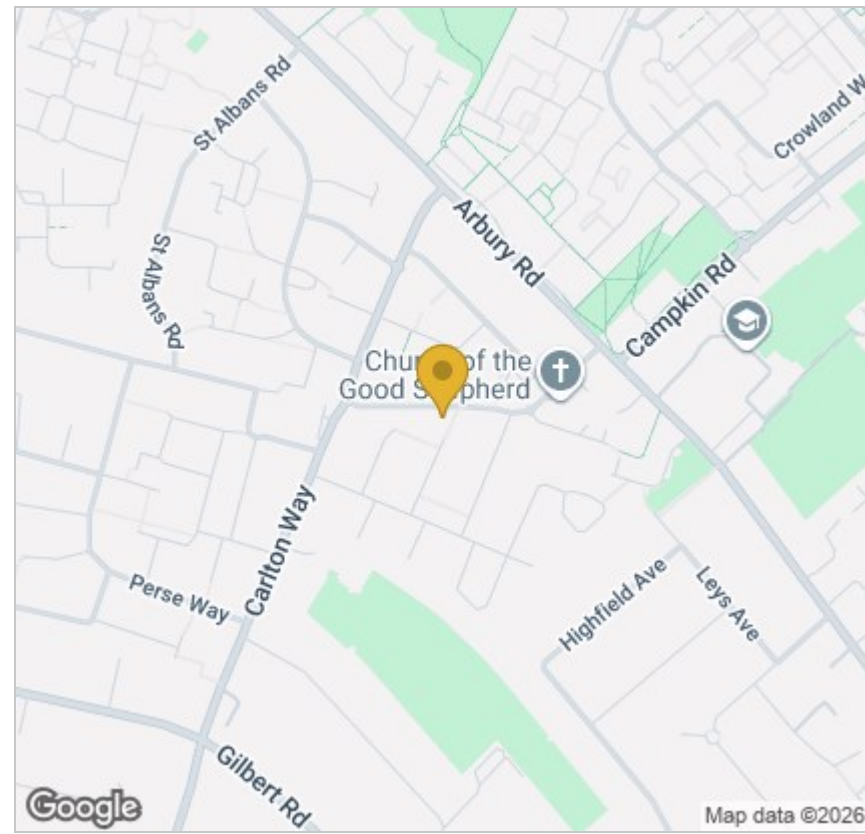
What3words: ///coats.since.earth



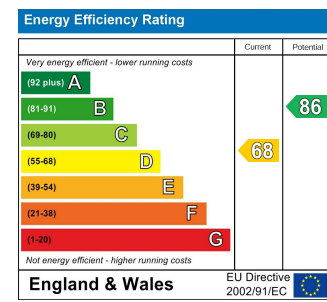


Total area: approx. 83.6 sq. metres (899.8 sq. feet)

Drawings are for guidance only
Plan produced using PlanUp.



Energy Efficiency Graph



Tenure: Freehold
Council tax band:

These particulars, whilst believed to be accurate, are set out as a general outline only for guidance and do not constitute any part of an offer or contract. Intending purchasers should not rely on them as statements of representation of fact, but must satisfy themselves by inspection or otherwise as to their accuracy. No person in this firm's employment has the authority to make or give any representation or warranty in respect of the property.

Cambridge Victoria
154-156 Victoria Road, Cambridge CB4 3DZ
01223 439 888 theteam@grayandtoynbee.com

Cambridge South
Adkins Corner, Perne Road, Cambridge CB1 3RU
01223 439 555 theteam@grayandtoynbee.com

Waterbeach
17 High Street, Waterbeach, CB25 9JU
01223 949 444 waterbeach@grayandtoynbee.com