



Paul Street, EC2A

£460,000

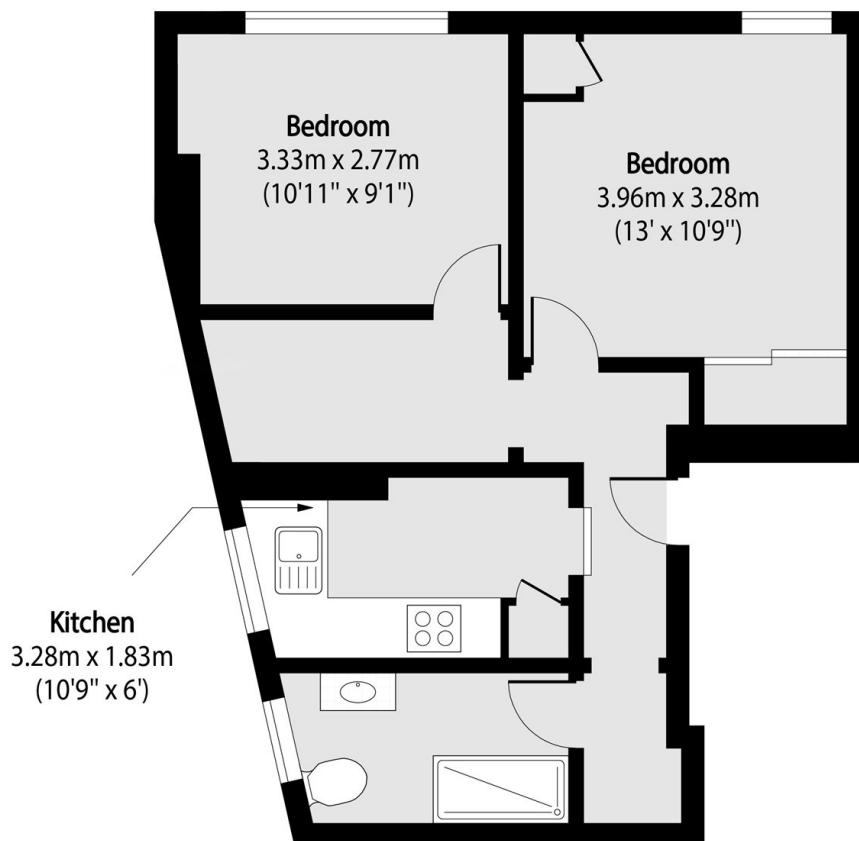
A well-presented two-bedroom apartment in Victoria Chambers. The apartment has been thoughtfully arranged to prioritise both functionality and comfort. The accommodation comprises a spacious principal bedroom and a versatile second bedroom, both of which are well-proportioned, a separate kitchen and a centrally located bathroom and living area.

Victoria Chambers is conveniently located on a quiet street in the heart of Shoreditch and the City fringe. The apartment benefits from access to the array of coffee shops, bars and restaurants whilst also being a short walk to Spitalfields Market, Liverpool Street, for the Elizabeth Line, and Old Street.

Features

- Two Bedroom
- Mansion Block
- Communal Courtyard
- Recently Renovated
- Wooden Flooring
- Secure

Paul Street,
London, EC2A



Total area (approx): 42.55 sq m (458 sq. ft)