



Orchard Vale, Bartestree, Hereford

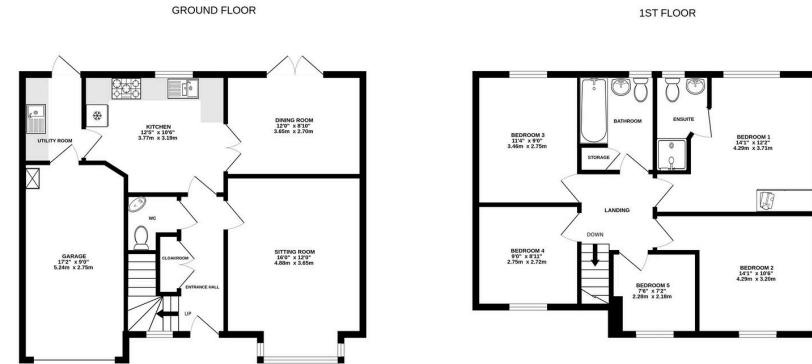
Guide Price £400,000

5 2 2



- 5 Bedrooms; Detached
- Spacious Sitting Room With Bay Window
- Rear Garden With Raised Decking And Patio
- Principal Bedroom With Ensuite
- Popular North Herefordshire Village
- Integral Garage & Driveway Parking





TOTAL FLOOR AREA: 1350 sq. ft. (125.4 sq.m.) approx.
 Whilst every attempt has been made to ensure the accuracy of the figures contained here, measurements of doors, windows, rooms and any other items are approximate and no responsibility is taken for any error, omission or misstatement. This plan is for illustrative purposes only and should be used as such by any prospective purchaser. The services, systems and appliances shown have not been tested and no guarantee as to their operability or efficiency can be given.
 Made with MetreQx ©2025

A Modern and Spacious 5 Bedroom Detached Family Home, set in the popular Orchard Vale development in Bartestree, just east of Hereford. The property offers spacious and versatile living across two floors, with an integrated garage, garden with elevated decking terrace and driveway parking.

