

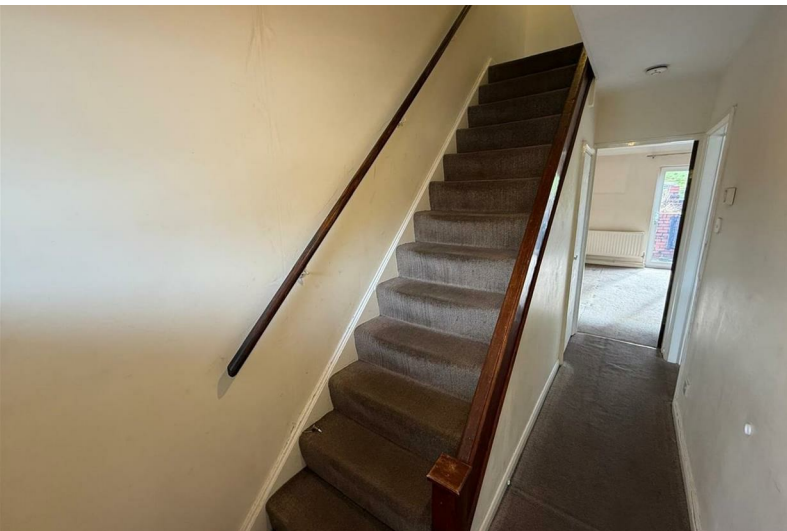
HUNTERS[®]

HERE TO GET *you* THERE



Ridge Grove

Stourbridge, DY9 7PY



Ridge Grove

Stourbridge, DY9 7PY

£199,950



Front of the Property

To the front of the property is a chipping stone driveway, storm porch, outside tap and gated side access.

Entrance Hall

13'5" x 5'6" (4.1 x 1.7)

With a door from the front, stairs leading to the first floor landing, storage cupboard, doors leading to various rooms and central heating radiator.

Kitchen Breakfast Room

13'5" x 9'2" (4.1 x 2.8)

With a door from the entrance hall, fitted kitchen with matching wall and base units, work surface over, stainless steel sink and drainer, tiled splashback, integrated oven with gas hob, cooker hood above, plumbing for washing machine, space for appliances and breakfast table, double glazed window to the front and side, double glazed door to the side and a central heating radiator.

Lounge Diner

15'5" x 13'5" (4.7 x 4.1)

With a door from the entrance hall, space for seating and dining, double glazed sliding door to the rear and a central heating radiator.

Landing

With stairs from the entrance hall, loft access and doors leading to various rooms.

Bedroom One

15'5" x 8'6" (4.7 x 2.6)

With a door from the first floor landing, storage cupboard housing central heating boiler, double glazed window to the rear and a central heating radiator.

Bedroom Two

11'9" x 8'10" (3.6 x 2.7)

With a door from the first floor landing, double glazed window to the front and a central heating radiator.

Bedroom Three

6'2" x 12'5" (1.9 x 3.8)

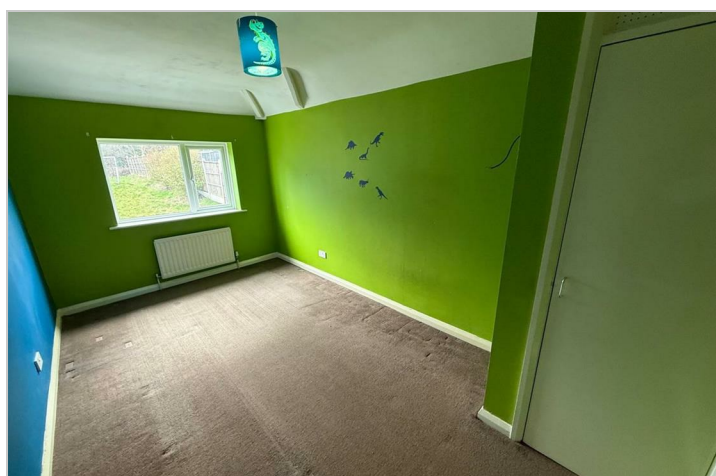
With a door from the first floor landing, double glazed window to the rear and a central heating radiator.

Bathroom

With a door from the first floor landing, bath with shower over, separate shower attachment, WC, wash hand basin, part tiled walls, double glazed window to the front and a central heating radiator.

Garden

With double glazed sliding doors from the lounge diner, patio seating area, steps leading to lawn, garden shed and gated side access.



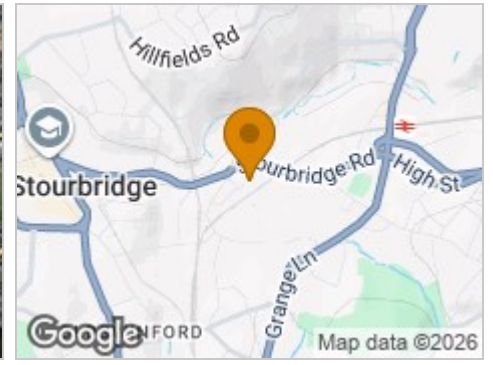
Road Map



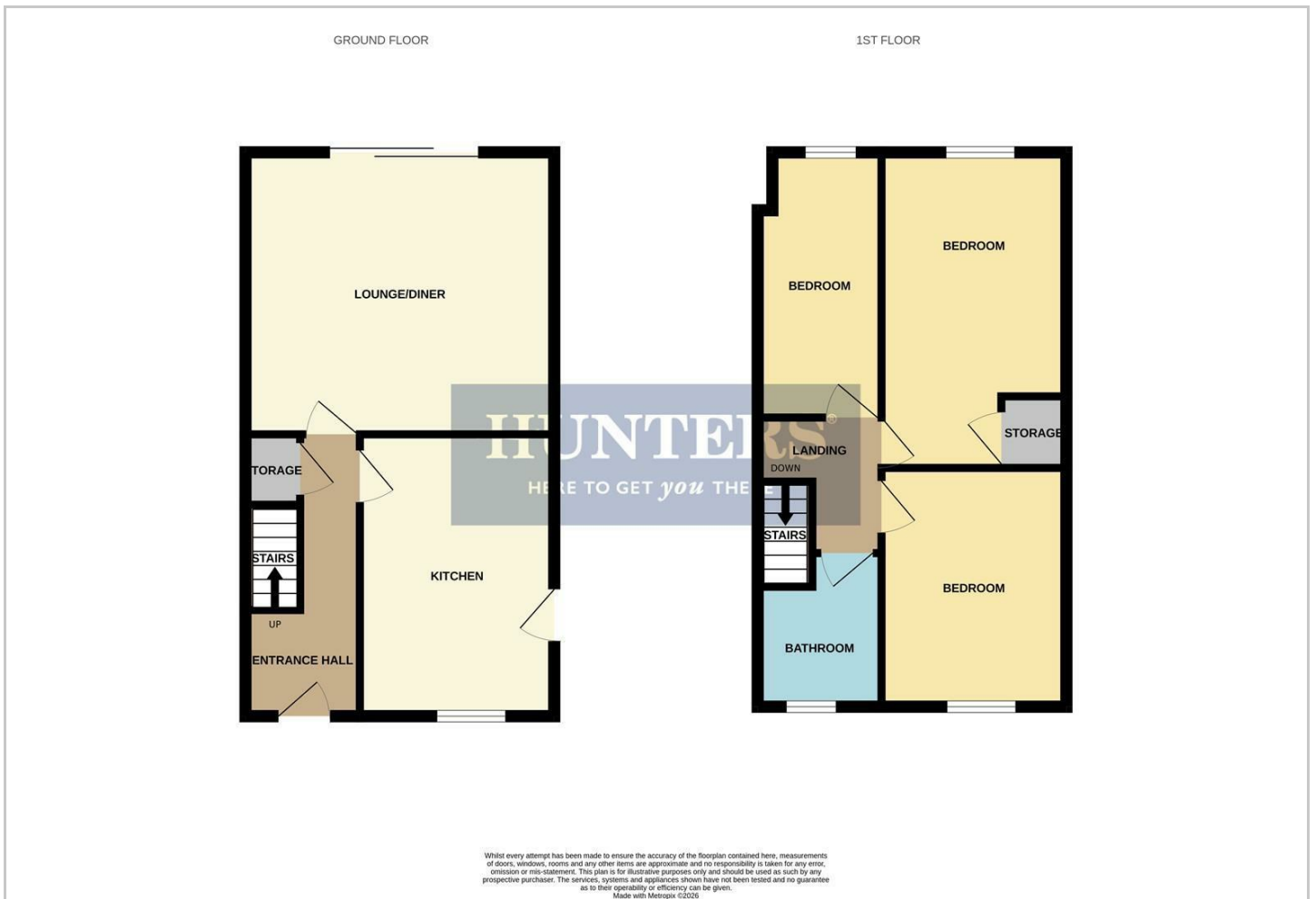
Hybrid Map



Terrain Map



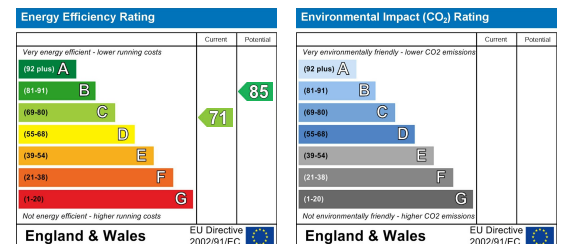
Floor Plan



Viewing

Please contact our Hunters Stourbridge Office on 01384 443331 if you wish to arrange a viewing appointment for this property or require further information.

Energy Efficiency Graph



These particulars are intended to give a fair and reliable description of the property but no responsibility for any inaccuracy or error can be accepted and do not constitute an offer or contract. We have not tested any services or appliances (including central heating if fitted) referred to in these particulars and the purchasers are advised to satisfy themselves as to the working order and condition. If a property is unoccupied at any time there may be reconnection charges for any switched off/disconnected or drained services or appliances - All measurements are approximate. **THINKING OF SELLING?** If you are thinking of selling your home or just curious to discover the value of your property, Hunters would be pleased to provide free, no obligation sales and marketing advice. Even if your home is outside the area covered by our local offices we can arrange a Market Appraisal through our national network of Hunters estate agents.