



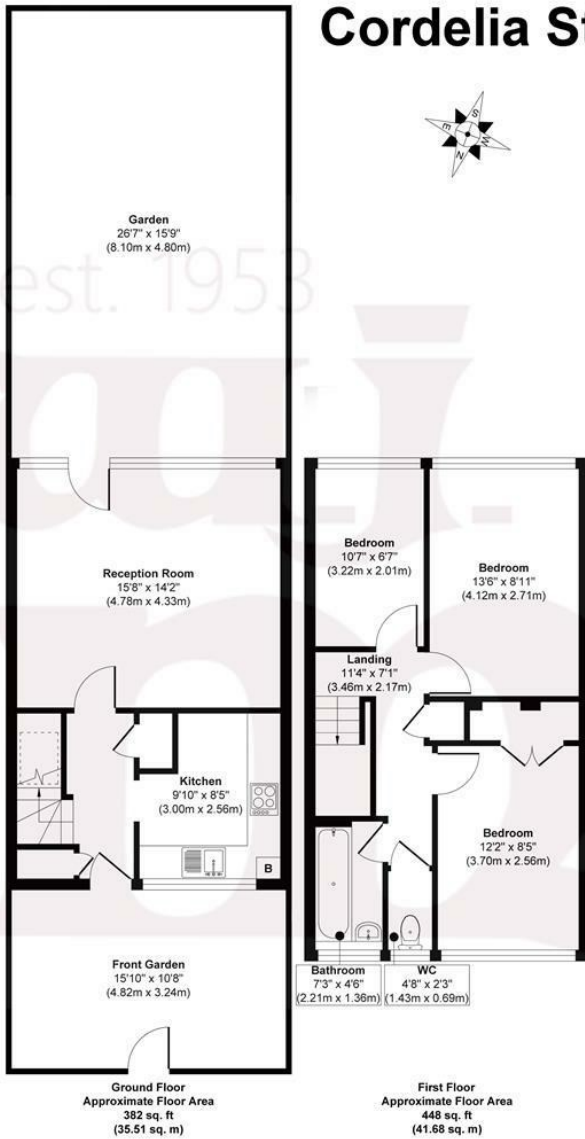
CORDELIA STREET, E14

OIEO £400,000 L/H

- Extended lease
- South facing rear garden
- 830 sq ft
- Chain free
- Residents' permit parking
- Ideal starter home

wj.
meade

Cordelia Street



Approx. Gross Internal Floor Area 830 sq. ft / 77.19 sq. m

Illustration for identification purposes only, measurements are approximate, not to scale.

Produced by Elements Property



WJ Meade are pleased to present this ground floor maisonette with front and rear gardens. The split level accommodation is arranged with an eat-in kitchen, separate reception room, family bathroom and three bedrooms. Located in a residential setting within walking distance of Canary Wharf, with Bartlett Park, Crisp Street Market, Poplar Baths and the Limehouse Cut canal just a selection of the many amenities close at hand.

Service charge £2,269.23 pa

Ground rent £0

216 years lease

Council tax band C

Current EPC Rating 74

Tenure: Leasehold



All sizes are approximate. The Agent has not tested any apparatus, equipment, fixtures and fittings, or services and so cannot verify that they are in working order or fit for the purpose. A buyer is advised to obtain verification from their Solicitors or Surveyor. Photographs are for illustration purposes only and may depict items, which are not for sale or included in the sale price. References to tenure of a property are based upon information supplied by the vendor. The agent has not had sight of the title documents, a buyer is advised to obtain verification from their solicitor. Money Laundering Regulations 2003: Intending purchasers will be asked to produce identification, documentation at a later stage and we would ask for your co-operation in order that there will be no delay in agreeing the sale.

These particulars are intended to give a fair description of the property only and are in no way guaranteed, nor do of any contract. They are issued on the express condition that all negotiations are conducted through W.J. Meade Estate Agents. All subject to contract and to being unsold.