



Netherwood Street, West Hampstead, NW6
£3,150 pcm

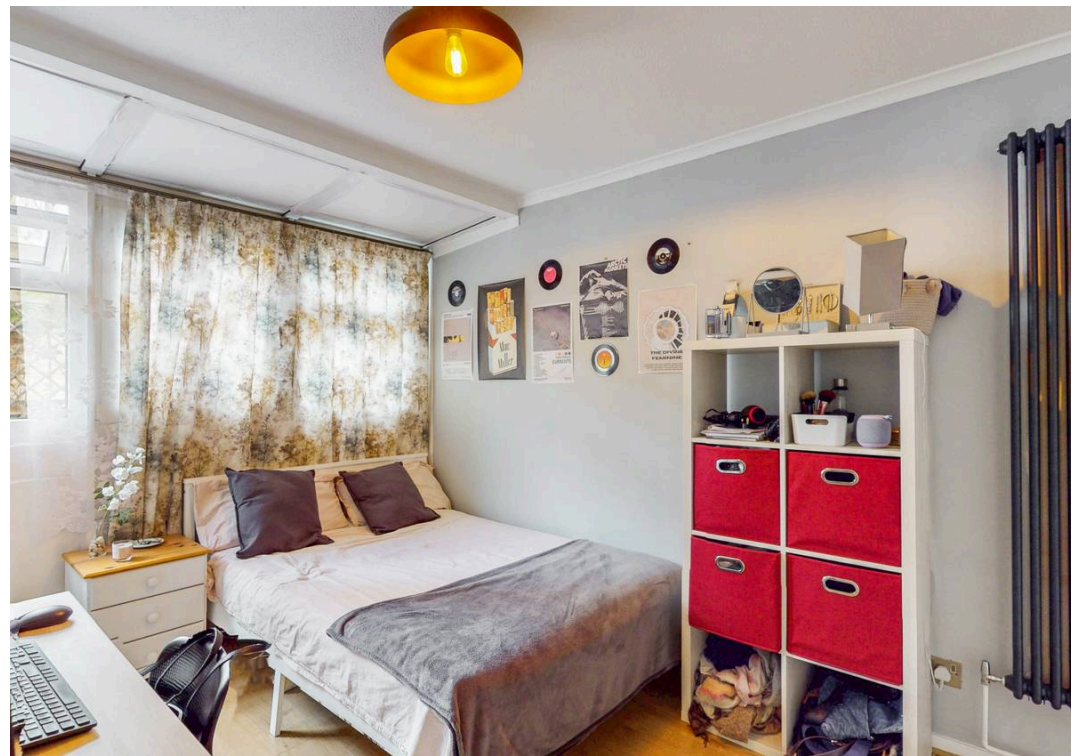
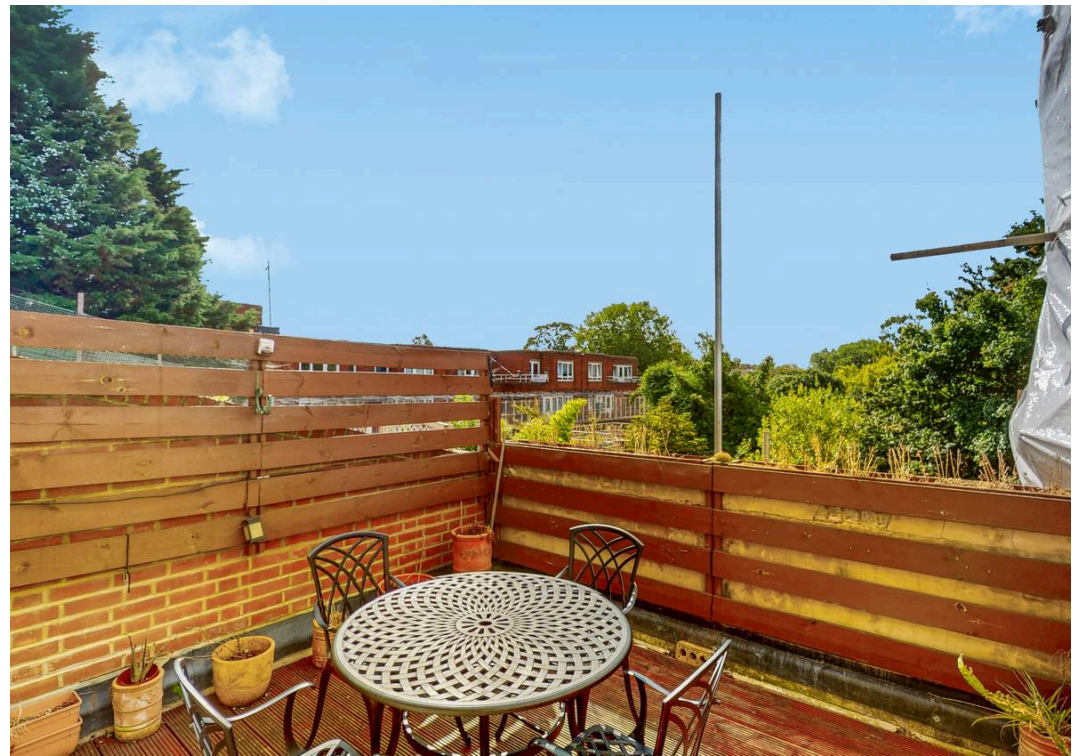
Netherwood Street, West Hampstead, NW6

This spacious and stylish three-bedroom apartment is perfectly situated in the heart of West Hampstead, one of London's most sought-after residential neighbourhoods. Offering a superb combination of modern design, generous living space, and a fantastic outdoor area, this property is ideal for professionals, families, or anyone looking to enjoy the best of city living in a vibrant yet peaceful setting.

Located within walking distance of West Hampstead's excellent transport links, including Underground, Overground, and Thameslink services, this property is perfectly positioned for convenient access to Central London and beyond. The local area is known for its charming cafes, independent shops, and green spaces, making it a welcoming and well-connected community.

This is a rare opportunity to secure a bright, modern home with generous proportions and private outdoor space in one of North West London's most desirable neighbourhoods.





Netherwood Street, NW6 2JR

Approx Gross Internal Area = 79.35 sq m / 854 sq ft



Ref :

Copyright **BLEU
PLAN**

The Floor plan is not to scale and measurements and areas shown are approximate and therefore should be used for illustrative purposes only. The plan has been prepared in accordance with the RICS code of Measuring Practice and whilst we have confidence in the information produced it must not be relied on. Maximum lengths and widths are represented on the floor plan. If there is any aspect of particular importance, you should carry out or commission your own inspection of the property.

Copyright @ BLEUPLAN



Black Katz

22 West Hampstead Mews, London - NW6 3BB

02073285000 • Thomas@blackkatz.com • blackkatz.com/