



DALES & PEAKS

10 Guildford Avenue
Walton, Chesterfield, S40 3HB
Guide Price £325,000



10 Guildford Avenue

Walton, Chesterfield, S40 3HB

£325,000 - £350,000 (Guide price)

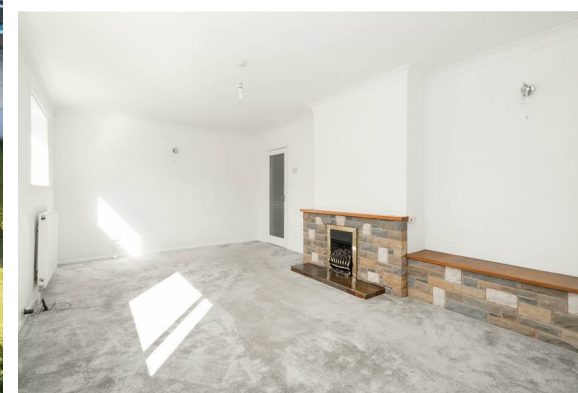
Enjoying an elevated position, with absolutely stunning views across Chesterfield towards the Peak District, located on this quiet street in the incredibly sought after Chesterfield suburb of Walton, is this fantastic detached home, presenting a truly special opportunity to modernise throughout and create an exceptional family home.

Offering 1453 sqft of accommodation over 2 storeys, the property features 2 reception rooms including a dining room and the family lounge, kitchen, ground floor WC, a large tandem garage and workshop area, 3 good sized bedrooms and a family bathroom with separate WC.

The property offers fantastic scope for development, subject to relevant planning consent.

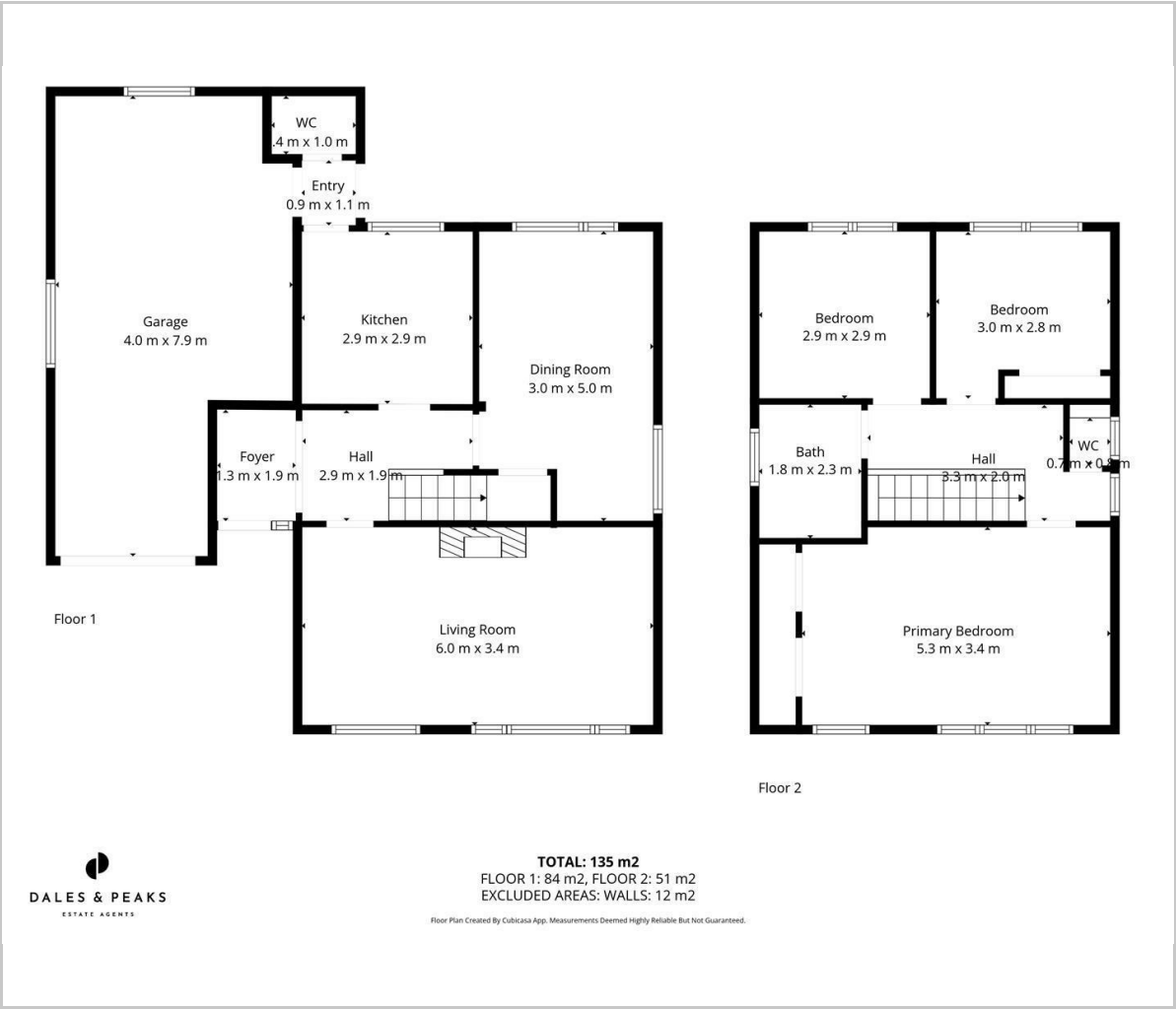
A truly stand out feature of this home is its position. Overlooking Chesterfield and the rolling Derbyshire countryside and The Peak District in the foreground, the views are absolutely spectacular.

Dales & Peaks ForwardMove
please read





Floor Plan

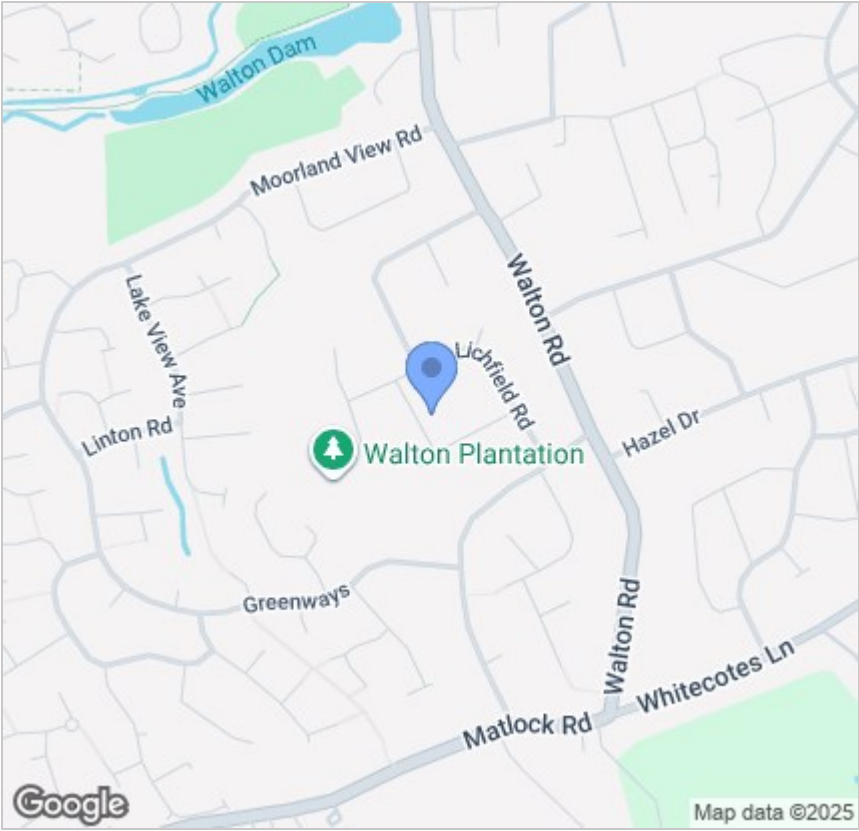


Viewing

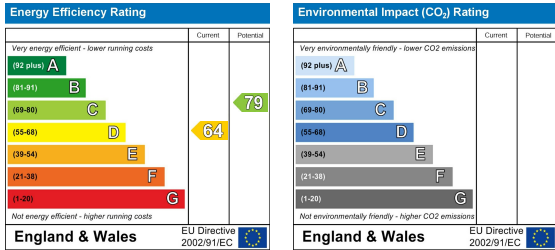
Please contact our Chesterfield Office on 01246 567540 if you wish to arrange a viewing appointment for this property or require further information.

These particulars, whilst believed to be accurate are set out as a general outline only for guidance and do not constitute any part of an offer or contract. Intending purchasers should not rely on them as statements of representation of fact, but must satisfy themselves by inspection or otherwise as to their accuracy. No person in this firms employment has the authority to make or give any representation or warranty in respect of the property.

Area Map



Energy Efficiency Graph



131 Chatsworth Road, Chesterfield, Derbyshire, S40 2AP
T: 01246 567540



E: info@dalesandpeaks.co.uk
www.dalesandpeaks.co.uk