

  
**PROMINENCE**  
ESTATES



**RESIDENTIAL**  
PROPERTY EXPERTS

COVENTRY, WARWICKSHIRE  
& LEAMINGTON SPA

**QUEEN ISABELS AVENUE,**  
COVENTRY, CV3 5GE

**£1,275 PCM**

## QUEEN ISABELS AVENUE



**PROMINENCE**  
ESTATES

We are pleased to offer this immaculately presented three-bedroom terraced home, situated in a popular residential area of Coventry. Having undergone a full refurbishment throughout, including new flooring throughout, this property is perfect for families or professionals looking for a modern and comfortable living space.

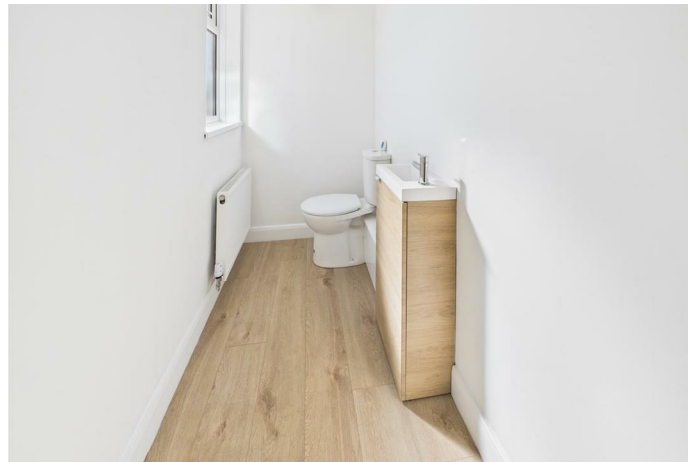
The ground floor comprises a spacious and bright lounge leading into a stylish kitchen/diner with modern appliances and plenty of storage. There is also a convenient downstairs W/C and useful storage space. Upstairs, you'll find three generously sized bedrooms, all freshly decorated with new flooring, and a family bathroom.

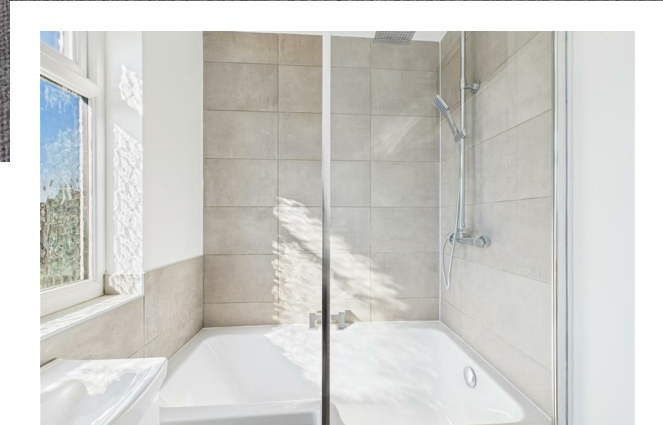
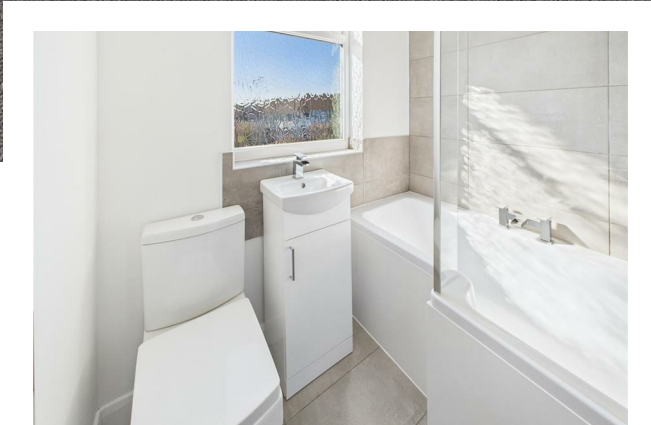
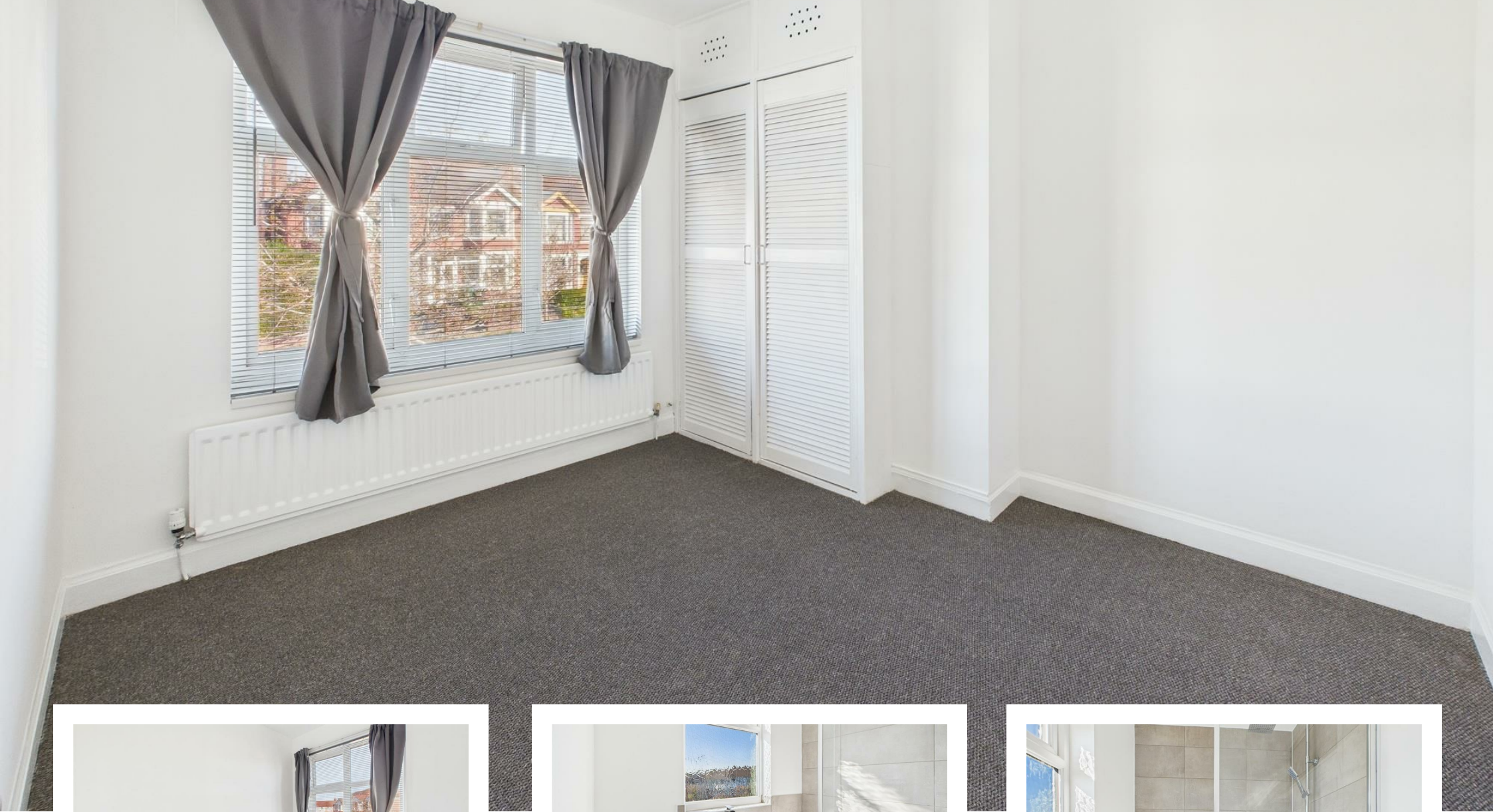
The property also boasts a well-maintained front garden and an enclosed rear garden with a patio area – ideal for outdoor relaxation or entertaining.

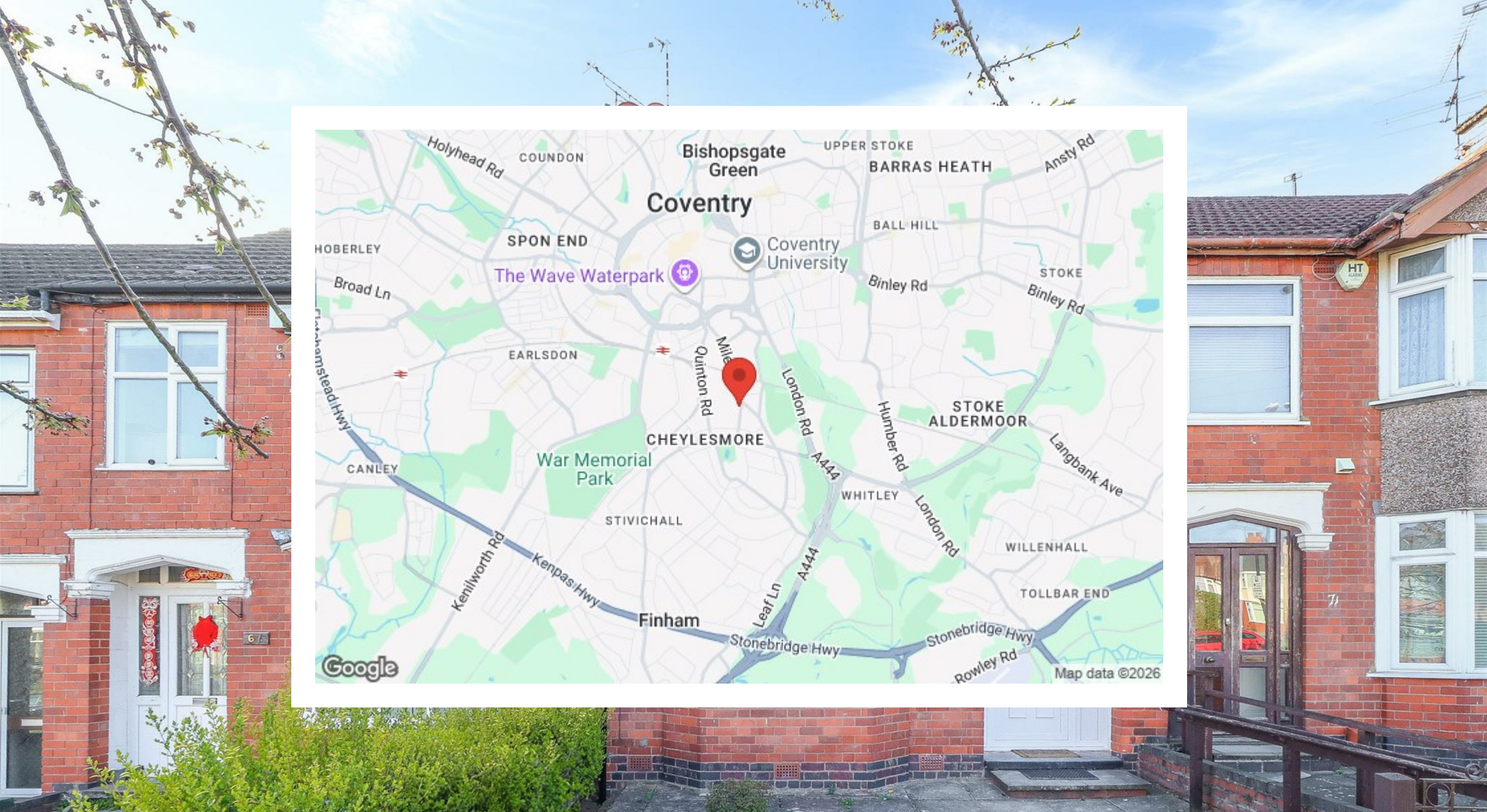
On-street parking is available right outside the property.

This home is ideally located within walking distance of local shops, takeaway outlets, and a pharmacy. The area benefits from excellent schools including Whitley Academy, St Anne's Catholic Primary School, and Corpus Christi Catholic School. Public transport is well-served with frequent bus services to Coventry City Centre, and the property offers easy access to the A45, A46, and M6 for commuters. Coventry Train Station is also within a 10-minute drive, offering direct links to Birmingham, London, and further destinations.

This fully refurbished home is available for immediate occupancy and is sure to be in high demand. Early viewing is highly recommended.







Prominence Estates  
5 Queen Isabels Avenue,  
Cheylesmore,  
Coventry,  
CV3 5GE

02476 309 826  
lettings@prominenceestates.com  
www.prominenceestates.com

  
**PROMINENCE**  
ESTATES