



HUNTERS[®]
HERE TO GET *you* THERE

3 Moreton Close, Bristol, BS14 9QN

3 Moreton Close, Bristol, BS14 9QN

£1,750 Per Month

****Enquiries accepted via email only** **AVAILABLE FROM 01/07/2026****

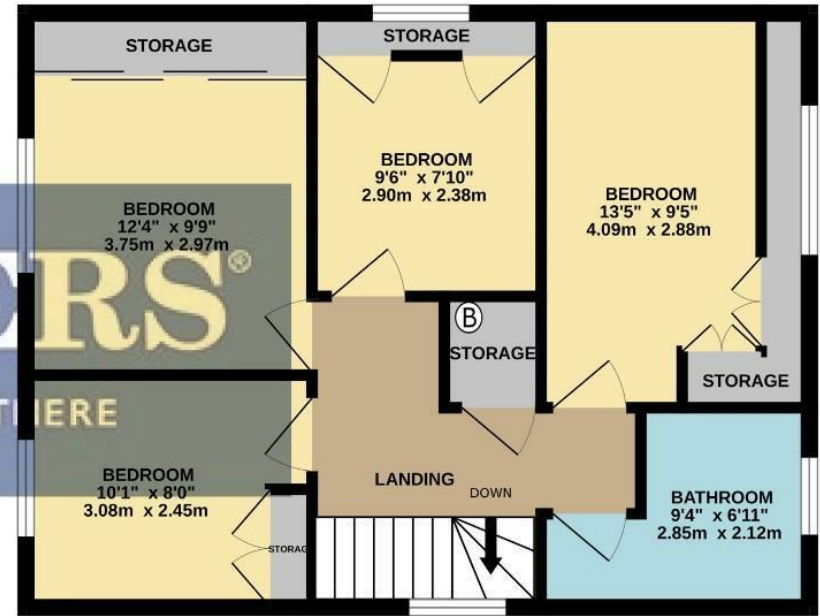
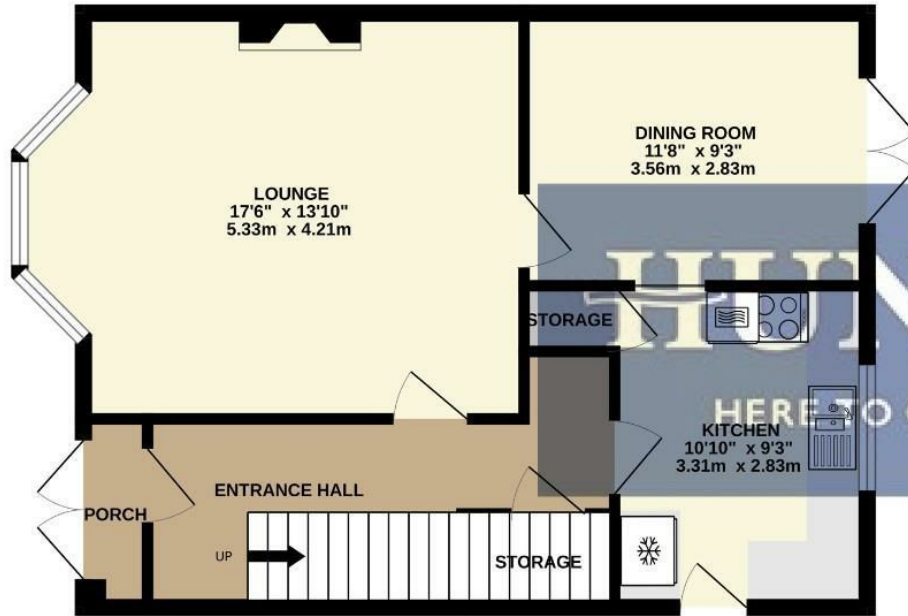
A four bedroom detached home on Moreton Close in Whitchurch, with one parking space as well as on street parking and garage.

This property is not licenced for sharers.

Please contact us via the portal or at knowle.bristol@hunters.com

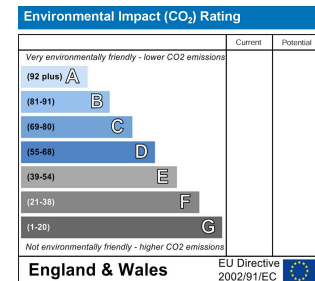
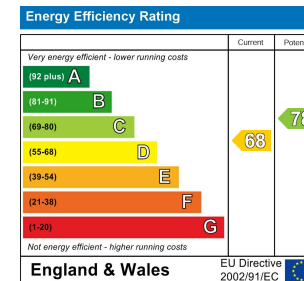
GROUND FLOOR

1ST FLOOR



TOTAL FLOOR AREA : 1163sq.ft. (108.0 sq.m.) approx.

Whilst every attempt has been made to ensure the accuracy of the floorplan contained here, measurements of doors, windows, rooms and any other items are approximate and no responsibility is taken for any error, omission or mis-statement. This plan is for illustrative purposes only and should be used as such by any prospective purchaser. The services, systems and appliances shown have not been tested and no guarantee as to their operability or efficiency can be given.
Made with Metropix ©2026



Front Garden

Situated to front elevation, Laid to chipping stones. Path leading to Entrance.

Porch

Double glazed double doors to front elevation, Entrance door to Hallway.

Entrance Hall

Entrance door to front elevation, Stairs to first floor, Doors to rooms, Understairs storage cupboard, Radiator, Laminate flooring.

Lounge

Double glazed bay window to front elevation, Electric fire with feature mantle surround, Door to Dining room, Radiator, Laminate flooring.

Dining Room

Double glazed double doors to garden, Door to Kitchen, Radiator, Laminate flooring.

Kitchen

Double glazed window to rear elevation, Wall and base units with works surfaces above, Integrated oven and microwave, Electric hob with extractor fan above, Sink drainer, Fitted upright fridge freezer, Door to Garden, Radiator, Laminate flooring.

PLEASE NOTE - THE WASHING MACHINE WILL BE GIFTED.

Landing

Double glazed window to side elevation, Doors to rooms, Carpet.

Door to storage cupboard, housing wall mounted combi boiler.

Bedroom One

Double glazed window to rear elevation, Inbuilt storage - wardrobes and draws, Radiator, Laminate flooring.

Bedroom Two

Double glazed window to front elevation, Inbuilt wardrobe, Radiator, Carpet.

Bedroom Three

Double glazed window to front elevation, Inbuilt storage cupboard, Radiator, Carpet.

Bedroom Four

Double glazed window to side elevation, Inbuilt storage, Radiator, Carpet.

Shower Room

Double glazed window to rear elevation, Shower cubicle, Low level W/C, Wash hand basin, Radiator, Vinyl flooring.


Rear Garden

Enclosed via fencing, Patio area, Laid to lawn with pathway leading to rear elevation, Flower borders with bushes and shrubs, Gate providing side access, Gate providing rear access.

Garage

Situated to rear elevation with space in front for parking one vehicle.

Energy Efficiency Rating

	Current	Potential
<i>Very energy efficient - lower running costs</i>		
(92 plus) A		
(81-91) B		
(69-80) C		78
(55-68) D	68	
(39-54) E		
(21-38) F		
(1-20) G		
<i>Not energy efficient - higher running costs</i>		
England & Wales	EU Directive 2002/91/EC	

These particulars are intended to give a fair and reliable description of the property but no responsibility for any inaccuracy or error can be accepted and do not constitute an offer or contract. We have not tested any services or appliances (including central heating if fitted) referred to in these particulars and the purchasers are advised to satisfy themselves as to the working order and condition. If a property is unoccupied at any time there may be reconnection charges for any switched off/disconnected or drained services or appliances - All measurements are approximate. If you are thinking of selling your home or just curious to discover the value of your property, Hunters would be pleased to provide free, no obligation sales and marketing advice. Even if your home is outside the area covered by our local offices we can arrange a Market Appraisal through our national network of Hunters estate agents.





