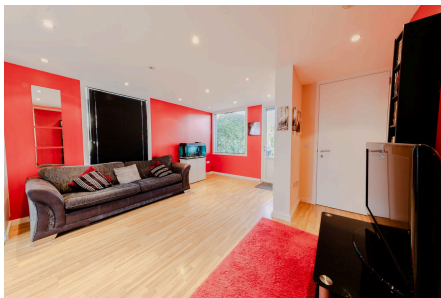


## Welles Lane, Oxley Park, Milton Keynes, MK4

Offers In Region Of £280,000

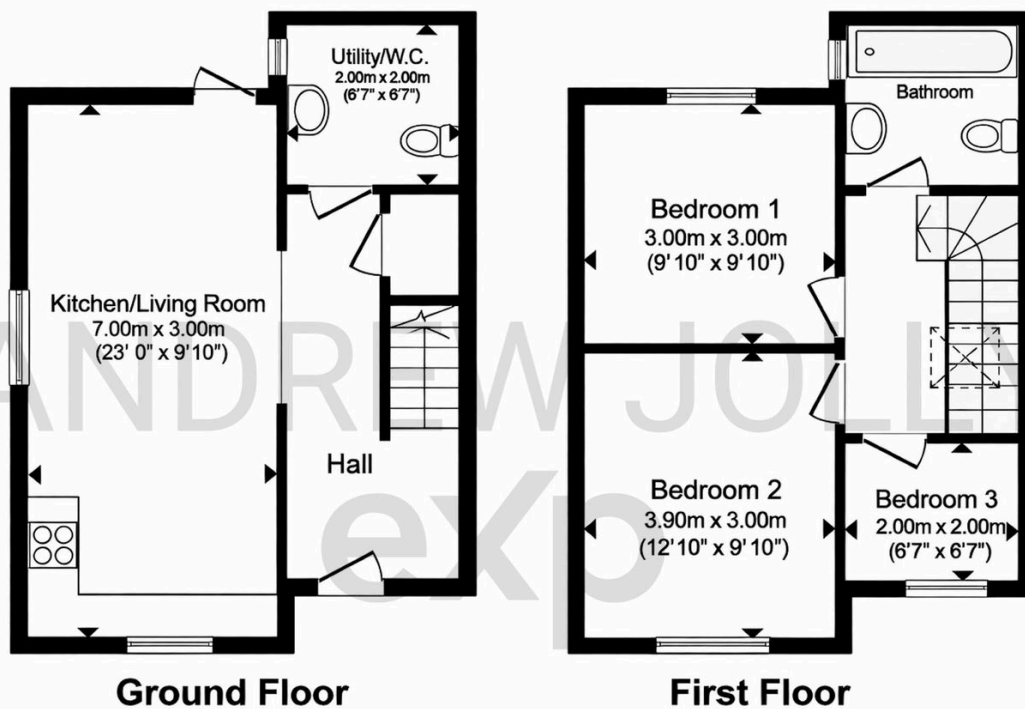
 3  1  1



Well-presented 3 bedroom semi-detached ECO home built by Taylor Wimpey in 2008, offering a 23ft open-plan kitchen/living space, utility/WC, family bathroom and modern energy-efficient design, situated in the popular Oxley Park area.

### Key Features

- Built in 2008 by Taylor Wimpey
- Current owner from new
- Three-bedroom semi-detached home
- Popular modern ECO home
- Energy-efficient design
- 771 Sq.Ft = 72 m<sup>2</sup>
- Private rear garden
- Driveway parking to rear for two cars
- No onward chain
- REF: AJ1276



Total floor area 71.6 m<sup>2</sup> (771 sq.ft.) approx

This floor plan is for illustrative purposes only. It is not drawn to scale. Any measurements, floor areas (including any total floor area), openings and orientation are approximate. No details are guaranteed, they cannot be relied upon for any purpose and they do not form part of any agreement. No liability is taken for any error, omission or misstatement. A party must rely upon its own inspection.