



## Hanger Lane, W5

£399,950

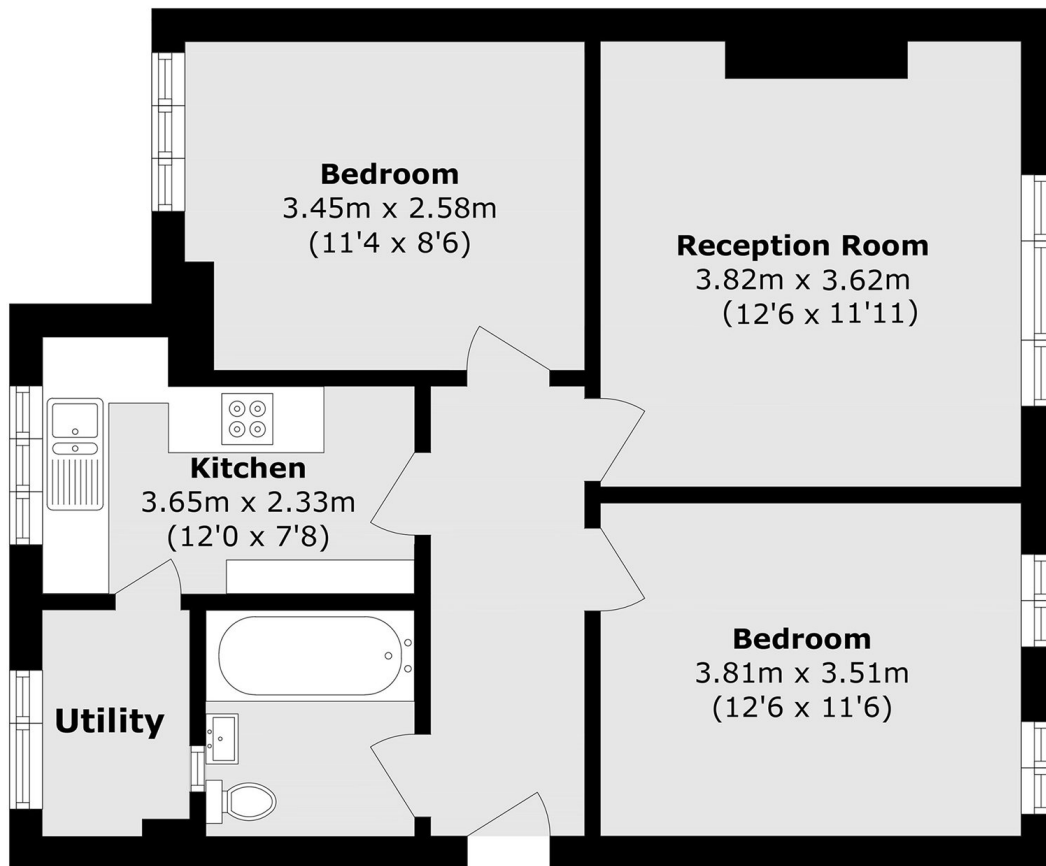
A top-floor, two double bedroom purpose-built apartment offered with no onward chain. Presented in excellent condition, the property has been newly modernised throughout and benefits from a long underlying lease and a separate utility room.

Situated within the sought-after Hanger Hill Conservation Area, the property is close to Hanger Lane Station (Central Line) and Park Royal Station (Piccadilly Line), with Ealing Broadway and the Elizabeth Line also within walking distance, providing excellent transport connections across London.

### Features

- Top Floor
- Two Double Bedrooms
- Newly Modernised
- No Onward Chain
- Utility Room
- Close To Transport

# Hanger Lane, London, W5



Total area (approx.): 60.1 sq. m (646.9 sq. ft)