



Osten Mews, South Kensington SW7

 **4 Bedrooms**  **4 Bathrooms**  **1 Reception Room**



Osten Mews, South Kensington SW7 freehold

A delightful double fronted mews house in a tranquil and quaint cobbled cul-de-sac, offering exceptional living and entertaining space, with flowing natural daylight throughout.

Key Features

- Excellent Natural light throughout
- En-suites off each bedroom
- Flexible accommodation
- Ideally located for shops, restaurants, transport links and parks
- Residents permit parking

Arranged over 3 floors, and extending to an impressive 1765sq ft of well-proportioned living space, this ideal family home offers a large open-plan style reception room with fitted kitchen. The property also offers four good-sized bedrooms with two en-suite bathrooms and two en-suite showrooms located across the first & second floors. The 2nd floor bedrooms offer a range of under eaves storage.

Osten Mews is a distinguished and charming cobbled mews situated in close proximity to Gloucester Road Station, Queens Gate, High Street Kensington and Kensington Gardens, featuring an extensive array of shops, restaurants and recreational activities in the near vicinity.



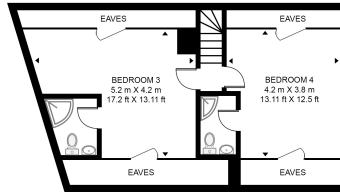




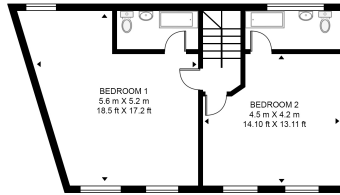


OSTEN MEWS

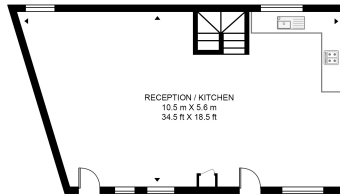
APPROXIMATE GROSS INTERNAL FLOOR AREA 1765 SQ.FT (164 SQ.M)



SECOND FLOOR



FIRST FLOOR



GROUND FLOOR



This floor plan has been defined by the RICS Code of Measurement. This floor plan and all others are for approximate representative purposes only and upon usage is agreed to as such by the client.
WWW: hvirtualart.com | TEL: 0203.974.1567 | EMAIL: info@hvirtualart.com

Sales, Lettings & Property Management

residential.jll.co.uk

