

Vanbrough Crescent, Northolt

Offers In Region Of £530,000

3 2 1




Well-presented three-bedroom family home situated on a quiet residential road in Northolt. The property offers a spacious through lounge/diner, modern kitchen, two bath/shower rooms plus a separate WC, and well-proportioned bedrooms. Externally, the home benefits from off-street parking and a low-maintenance rear garden with artificial turf. Conveniently located close to local shops, schools, bus routes, and with easy access to the A40.

910 Uxbridge Road, Hayes
Middlesex UB4 0RW

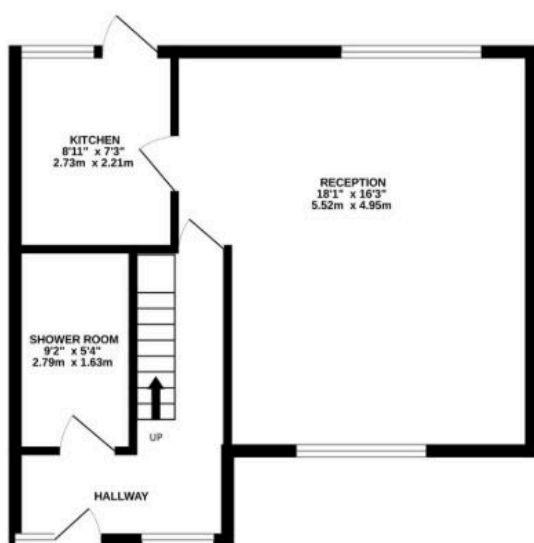
info@shawsoflondon.co.uk
www.shawsoflondon.co.uk

020 8561 6888

 @shawsoflondon

- Three Bedroom Terraced
- Through Lounge
- Fitted Kitchen
- Driveway for 4 Cars
- Double Glazed
- Potential To Extend Further (STPP)
- Downstairs Shower/WC
- Rear Garden
- Gas Central Heating
- Close to Amenities & 1.5 Miles To Northolt Station

GROUND FLOOR
464 sq.ft. (43.1 sq.m.) approx.



1ST FLOOR
425 sq.ft. (39.5 sq.m.) approx.

