



# Lexham Gardens

Kensington, W8

£3,000 per month  
(£692.31 per week)

A bright two bedroom flat on the third floor (with lift) of a stucco fronted period conversion. The flat benefits from a large South facing reception room, en suite shower room, family bathroom and a separate kitchen.



# Lexham Gardens

Kensington, W8

- A bright flat with a South facing reception room
- Two bedrooms, two bathrooms, reception room, separate kitchen
- Good storage throughout and lift access to the third floor
- In close proximity to Gloucester Road and Earls Court underground stations

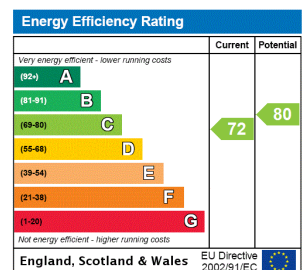


A bright two bedroom flat on the third floor (with lift) of a stucco fronted period conversion. The flat benefits from a large South facing reception room, en suite shower room, family bathroom and a separate kitchen. Access to communal gardens by separate arrangement.

Lexham Gardens is a pretty garden square conveniently located close to Gloucester Road tube station, Kensington High Street and Earls Court.

Lexham Gardens is a pretty garden square conveniently located close to Gloucester Road tube station, Kensington High Street and Earls Court.

**Minimum Term:** 12 months  
**Deposit Required:** £3,461.54  
**Local Authority:** Kensington and Chelsea  
**Council Tax Band:** F  
**EPC Rating:** C  
**Unfurnished**



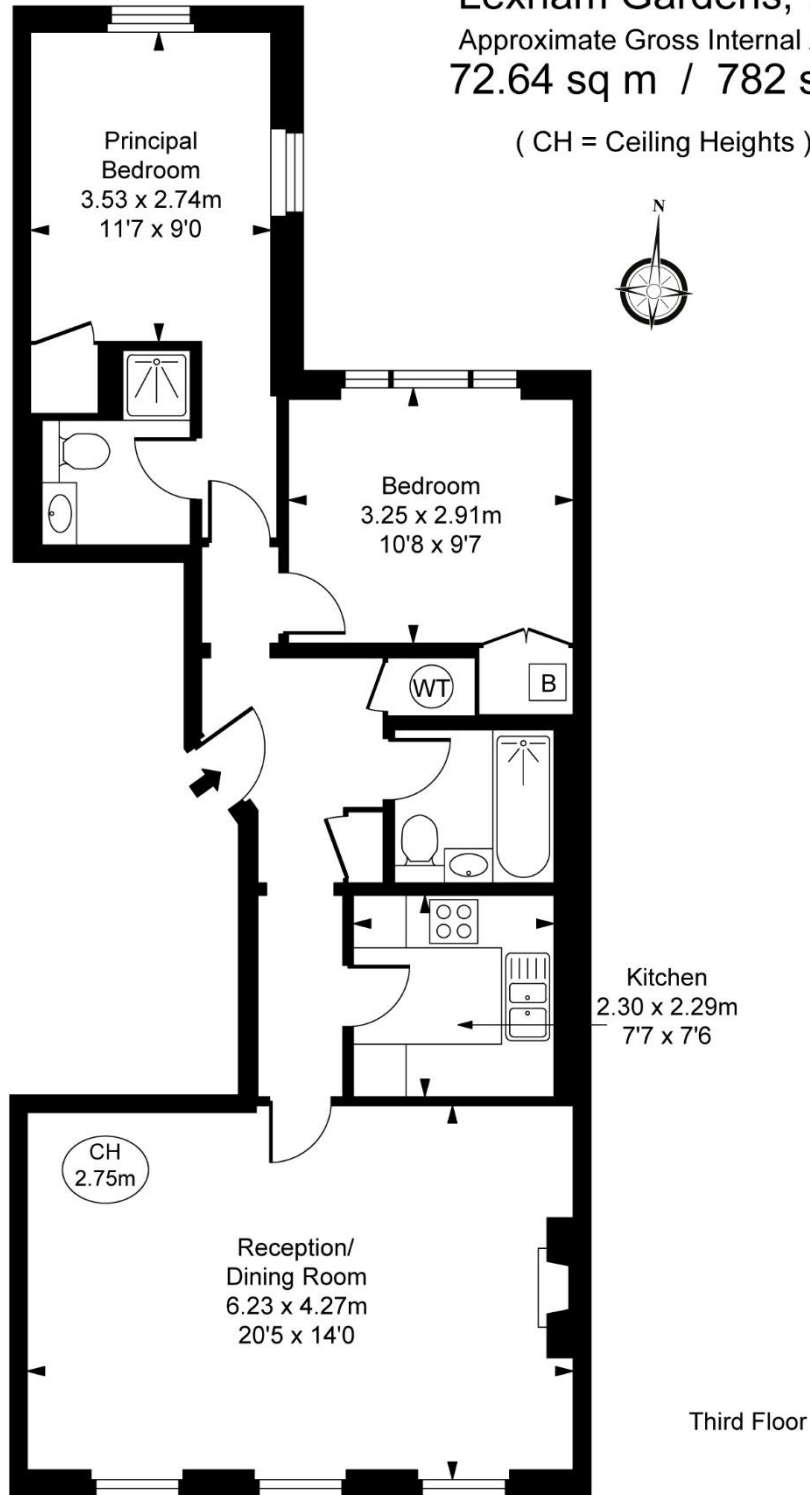
### Chestertons Kensington Lettings

116 Kensington High Street  
 Kensington  
 London  
 W8 7RW  
 kensingtonlettingsusers@chestertons.co.uk  
 02079377260  
 chestertons.co.uk

Additional tenant charges apply (fees apply to non-AST tenancies only)  
 Tenancy Agreement Fee: £300  
 References per Tenant/Guarantor: £60  
 Inventory check (approx. £100 – £250 inc. VAT)  
 chestertons.co.uk/property-to-rent/applicable-fees

Lexham Gardens, W8  
Approximate Gross Internal Area  
72.64 sq m / 782 sq ft

( CH = Ceiling Heights )



This plan is not to scale. It is for guidance and not for valuation purposes.  
All measurements and areas are approximate only, and have been prepared in accordance with the current edition of the RICS Code of Measuring Practice.  
© Fulham Performance