

Kingfisher Drive, Yateley, GU46 6NP

£395,000

 3  1  2

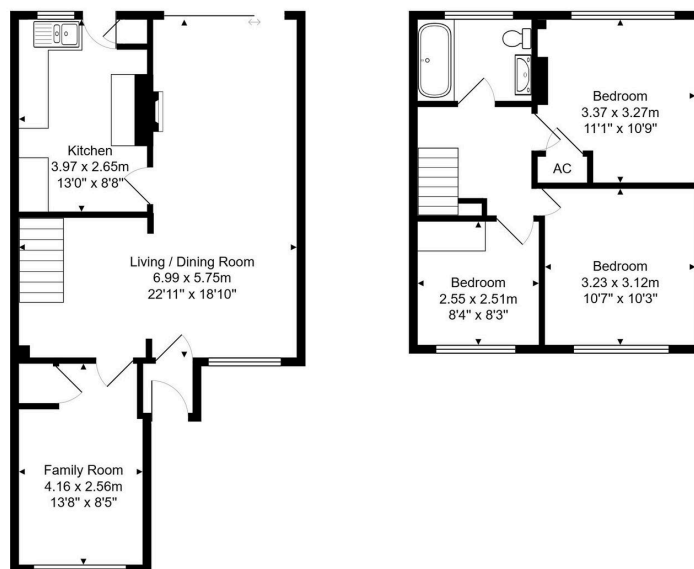


Situated in a highly sought-after location close to popular schools, shops and amenities is the well-presented family home.

Key Features

- No Onward Chain
- Refitted Bathroom
- Family Room
- Enclosed Rear Garden
- Great Location Next To Yateley School
- Three Good Sized Bedrooms
- Large Living / Dining Room
- Kitchen
- Off Road Parking
-

36, Kingfisher Drive, Yateley, GU46 6NP



Total Area: 91.1 m² ... 981 ft²

All measurements are approximate and for display purposes only