

Energy Efficiency Rating		Current	Potential
Very energy efficient - lower running costs			
(92 plus) A			
(81-91) B			
(69-80) C			75
(55-68) D	66		
(39-54) E			
(21-38) F			
(1-20) G			
Not energy efficient - higher running costs			
England & Wales	EU Directive 2002/91/EC		

35 Rockall Court, Langley, SL3 8EZ

£1,150 Per Month

- Double Bedroom With Wardrobe
- Spacious Living Room
- Gas Central Heating
- Walking Distance to Langley Elizabeth Line Station
- Fully Furnished Throughout
- Ground Floor Apartment
- Separate Fitted Kitchen
- Allocated Parking Space
- Easy Access to M4 & M25 Motorways
- Available From 27th June 2026

35 Rockall Court, Langley SL3 8EZ

A well-presented, fully furnished ground-floor apartment in the heart of Langley Village, just a short walk from Langley Elizabeth line station - giving fast, direct access to Paddington, Heathrow, and the City.

The property features a bright and spacious living room furnished with a sofa, coffee table, and dining set, a separate fitted kitchen with electric cooker and washing machine, and a well-proportioned double bedroom with wardrobe. The bathroom has a bath with overhead shower.

Further benefits include gas central heating, double glazing, and an allocated parking space.

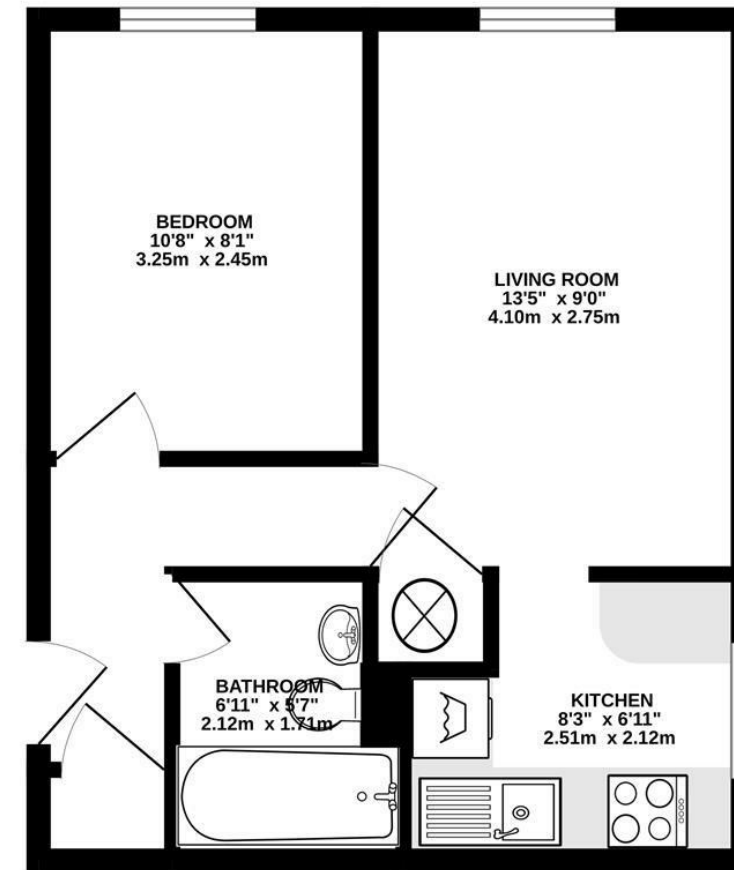
Available from 27th June 2026, furnished. Local road links include easy access to both the M4 and M25.



Council Tax Band: B



GROUND FLOOR
346 sq.ft. (32.2 sq.m.) approx.



TOTAL FLOOR AREA : 346 sq.ft. (32.2 sq.m.) approx.
Whilst every attempt has been made to ensure the accuracy of the floorplan contained here, measurements of doors, windows, rooms and any other items are approximate and no responsibility is taken for any error, omission or mis-statement. This plan is for illustrative purposes only and should be used as such by any prospective purchaser. The services, systems and appliances shown have not been tested and no guarantee as to their operability or efficiency can be given.
Made with Metropix ©2024