



## Stags Way, TW7

£699,950

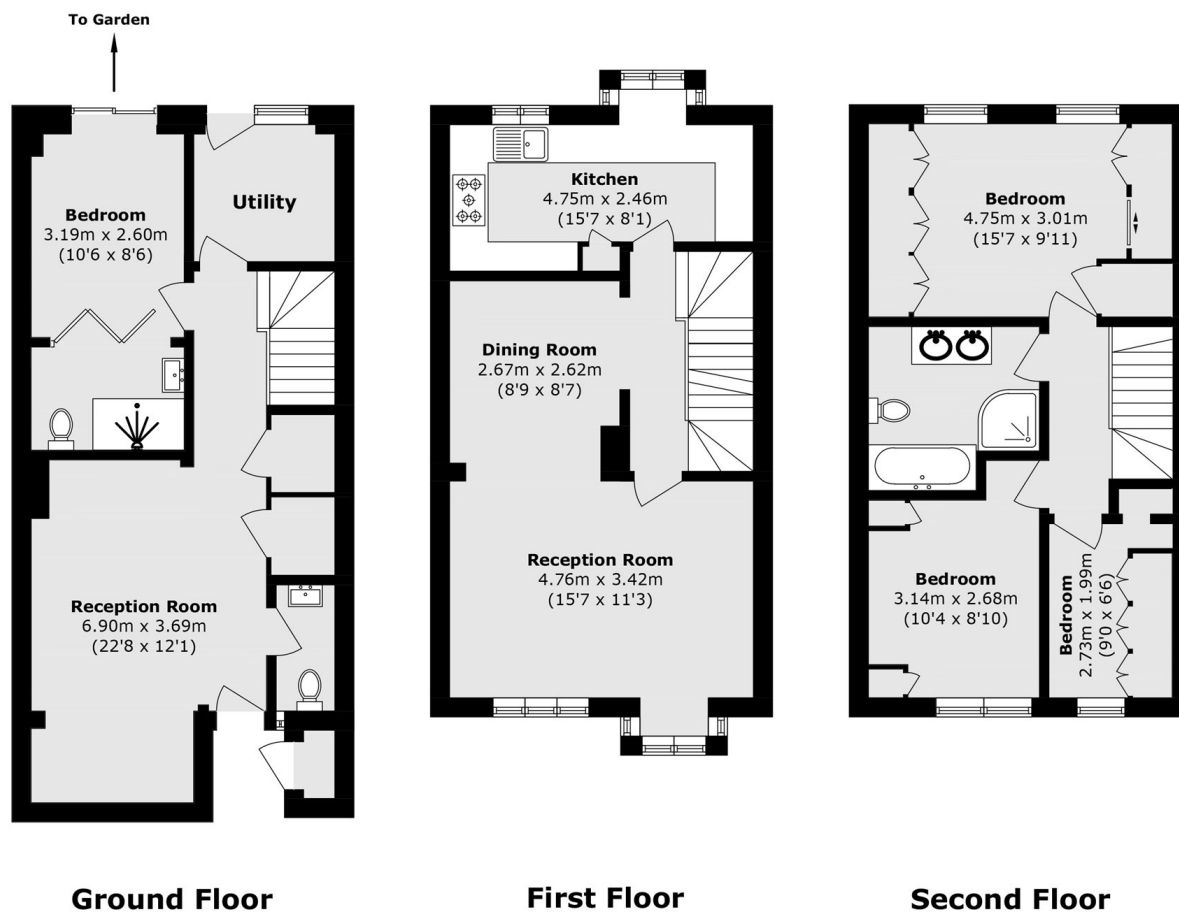
A beautifully presented town house arranged over three floors offering more than 1,445 square feet of generous living space, comprising of four bedrooms, two generous reception rooms and two bathrooms. Benefits include a private garden, utility room, parking for multiple cars and a professionally fitted sauna! There is further potential to extend STPP. EPC: B

Stags Way is a popular and sought after development situated close to excellent schools with the highly regarded and outstanding Ofsted rated Nishkam School a short walk away. Osterley tube station (Piccadilly line) and local amenities are close by and there is easy access in and out of London via the A4/M4.

### Features

- Four Bedroom House
- Two Bathrooms & Guest WC
- Utility Room
- Sauna
- Off Street Parking
- Private & Communal Gardens

# Stags Way, Isleworth, TW7



Total area (approx.): 134.3 sq. m (1445.6 sq. ft)  
Outbuilding area (approx.): 0.5 sq. m (5.3 sq. ft)