

## Times Square, E1

**£3,100** Per calendar month

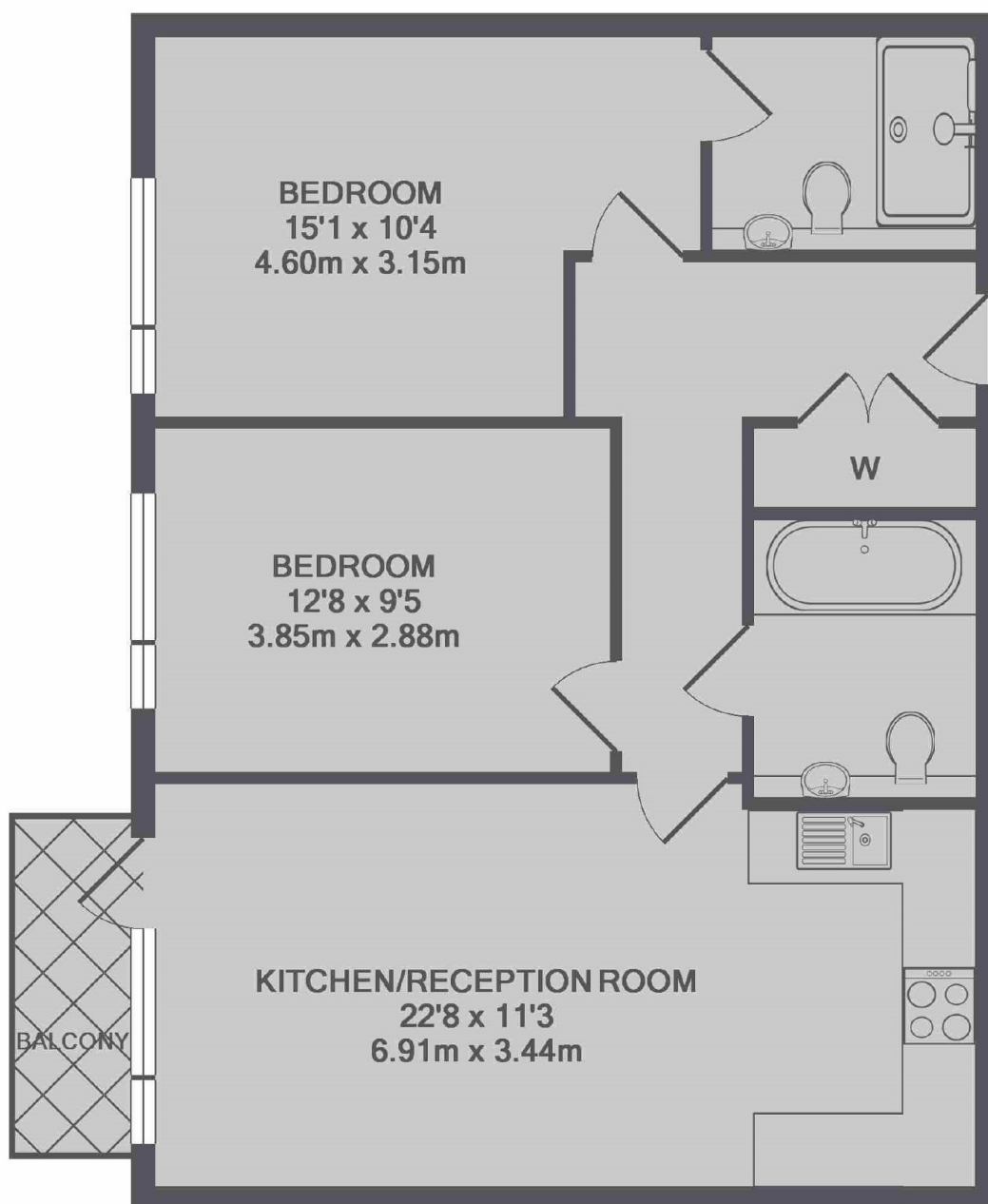
This modern two double bedroom, two bathroom apartment is based in a development with concierge and has great access to both the City and Canary Wharf. The apartment offers a bright and spacious living space with two balconies.

Times Square has a 24 hour concierge service and is just over a quarter mile from Aldgate East Station (District/ Hammersmith & City Line) and less than a quarter mile from Tower Gateway (DLR Line) for easy access to the City and Docklands.

### Features

- Two Double Bedrooms
- Two Bathrooms
- Furnished
- Balcony
- Concierge
- Aldgate

# Times Square, London, E1



TOTAL APPROX. FLOOR AREA 714 SQ.FT. (66.3 SQ.M.)

## Dexters

City  
5 Sandys Row  
London  
E1 7HW  
Lettings  
020 7392 9111

Energy Rating: C. We aim to make our particulars both accurate and reliable. However they are not guaranteed; nor do they form part of an offer or contract. If you require clarification on any points then please contact us, especially if you're traveling some distance to view. Please note that appliances and heating systems have not been tested and therefore no warranties can be given as to their good working order.

 **RICS** | Regulated  
Estate Agent  
and Letting Agent

[dexters.co.uk](https://www.dexters.co.uk)