



DAVID  
BURR

# Kenstone House

*A peaceful setting, generous space, and a home designed for real life.*



---

## Designed for family life, set for a slower pace.

---

This is the kind of home that quietly delivers on everything that matters.

Positioned along a no-through lane in Hessett, the setting immediately stands out — open farmland to the front, and beautifully established gardens wrapping the house to the rear and sides. It feels calm, private and settled, yet remains incredibly well connected for day-to-day life.

---



# Key Features

---

Open countryside views to the front

---

Cinema room with surround sound  
(flexible bedroom space)

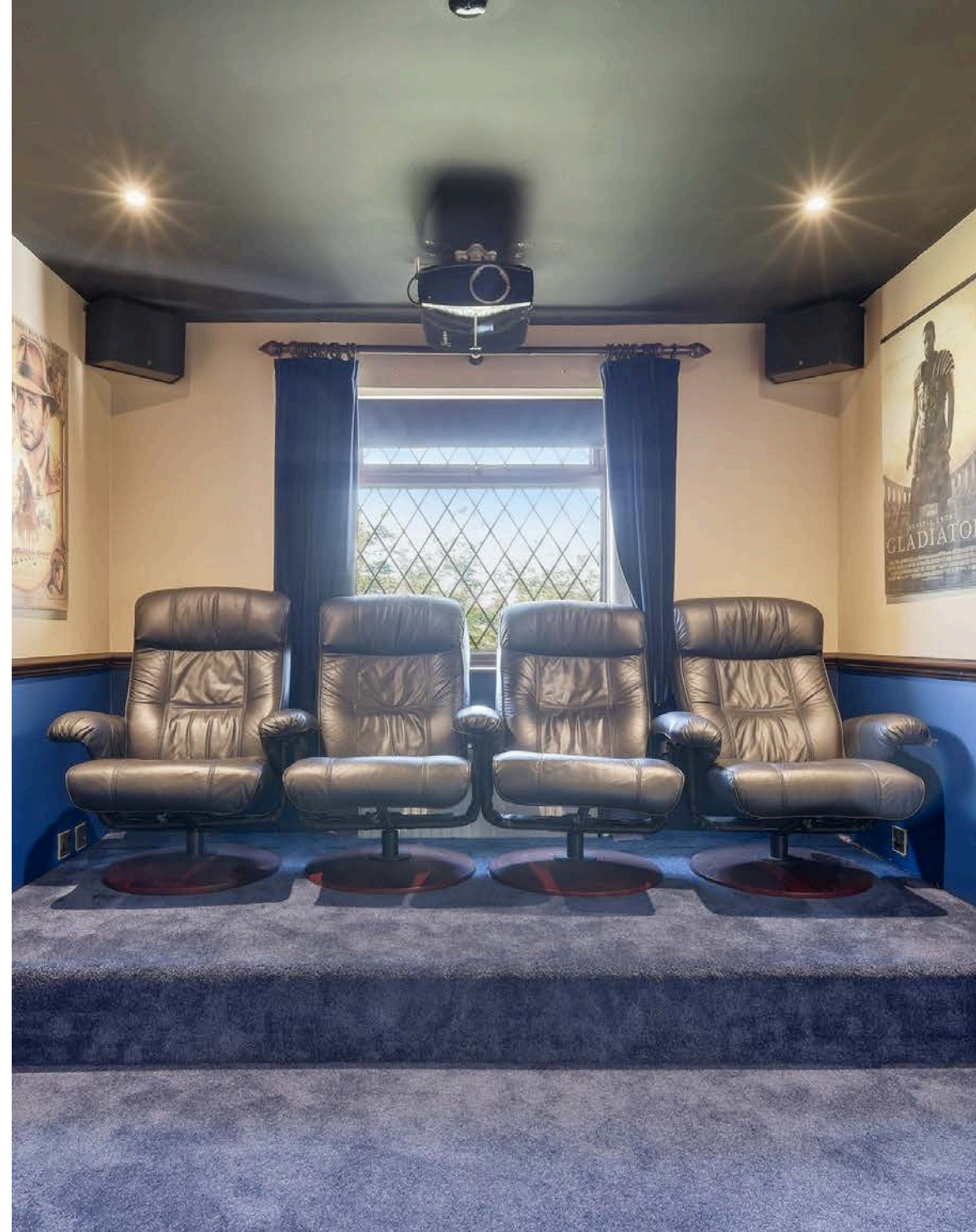
---

Five bedrooms, including principal  
suite with dressing room & en-suite

---

Detached double garage & driveway  
parking for up to four cars

---



---

# Living & Entertaining

---

Inside, the house has a natural flow that suits modern family living.

The sitting room is the heart of the home. Generous in scale, dual-aspect and centred around a fireplace, it connects effortlessly into the conservatory — a space that really comes into its own when entertaining or simply enjoying the garden throughout the seasons.



---

# Kitchen & Daily living

---

The kitchen/breakfast room has been upgraded with a practical, considered layout and quality finishes, making it a space that works just as well for everyday routines as it does for hosting. The adjoining utility/boot room adds a layer of functionality that families will immediately appreciate.



---

# Bedrooms & Bathrooms

---

Upstairs, five bedrooms provide flexibility rather than compromise. The principal suite is well arranged with a dressing room and en-suite, while the remaining bedrooms adapt easily — whether for family, guests, or working from home. The cinema room adds a lifestyle element, but can evolve as needs change.



---

# Garden & Outside area

---

The gardens are a defining feature.

Carefully established over time, they offer a real sense of privacy and maturity — with layered planting, open lawn, and quieter corners to enjoy throughout the day. A pond and multiple seating areas create a setting that feels both relaxing and engaging, whether for children, gardening, or entertaining.



# Floorplan

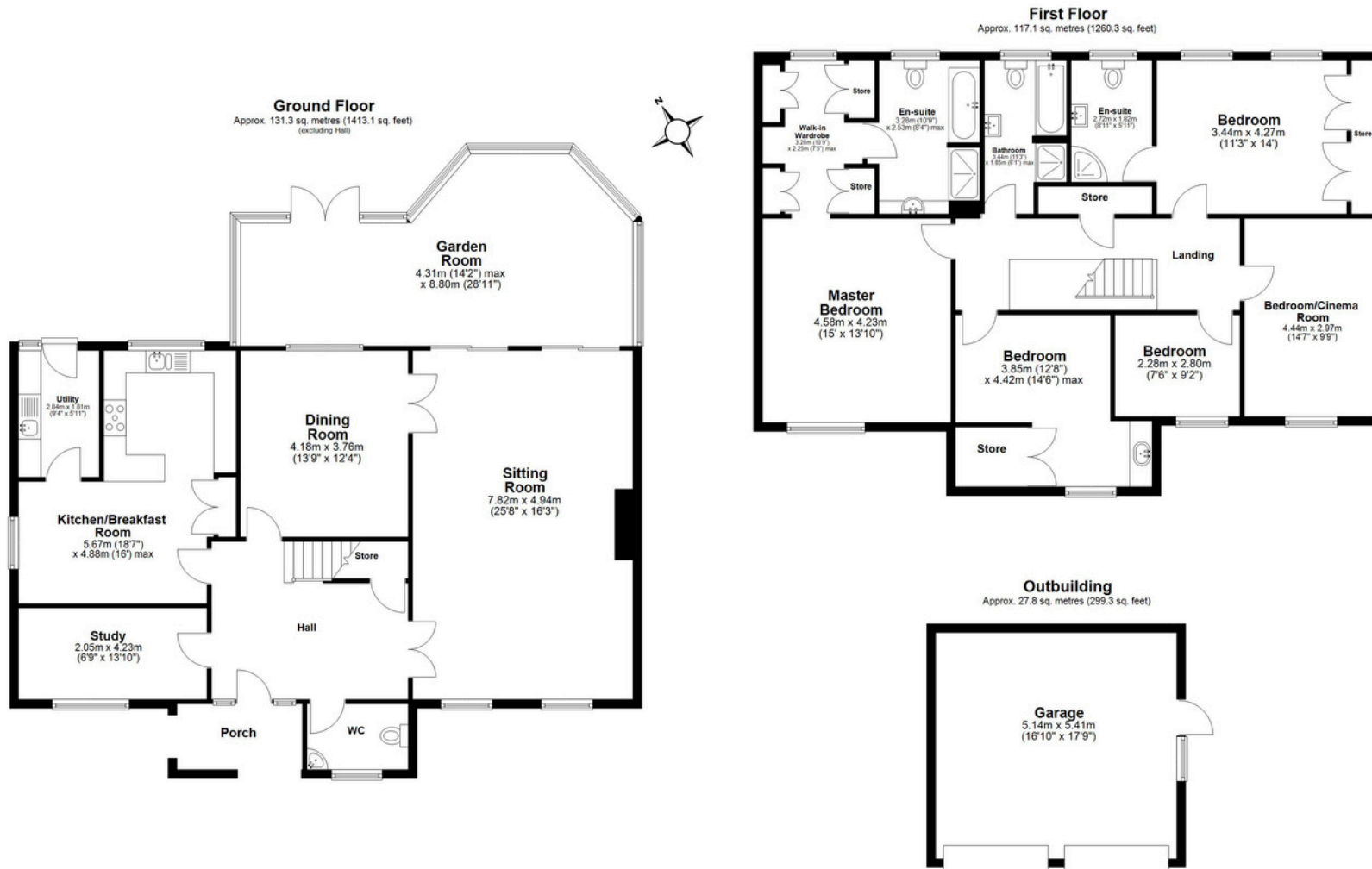
## Property information

Mid Suffolk District Council - G

EPC Rating: D

Tenure: Freehold

NOTICE: Whilst every effort has been made to ensure the accuracy of these sales details, they are for guidance purposes only and prospective purchasers or lessees are advised to seek their own professional advice as well as to satisfy themselves by inspection or otherwise as to their correctness. No representation or warranty whatever is made in relation to this property by David Burr or its employees nor do such sales details form part of any offer or contract.



Total area: approx. 276.2 sq. metres (2972.7 sq. feet)

This floor plan has been created by a third party and should be used as a general outline for guidance only. Any areas, measurements or distances quoted are approximate and any intending purchaser or lessee should satisfy themselves by inspection, searches, enquiries and/or full survey as to the correctness of each statement. We accept no responsibility or liability for any loss whatsoever that may arise as a result of this plan and the information contained within.

© @modephoto.uk | www.modephoto.co.uk  
Plan produced using PlanUp.™

Hubbard Lane, Hesselton



David Burr - Woolpit  
Sampson House, Woolpit,  
Bury IP30 9QN

01359 245 245

Woolpit@davidburr.co.uk