



Castles

ASKING PRICE

£440,000

Oatlands Road

Enfield, EN3 5LJ Freehold

PROPERTY SUMMARY

A 3 bedroom end of terrace family house located conveniently off the Hertford Road in Enfield Highway close to local schools, shops and bus routes and within 1 mile of Brimsdown train station. The property offers spacious bedrooms and is in good decorative order. Viewing is recommended.

Features include:-

Living room,

Fitted kitchen,

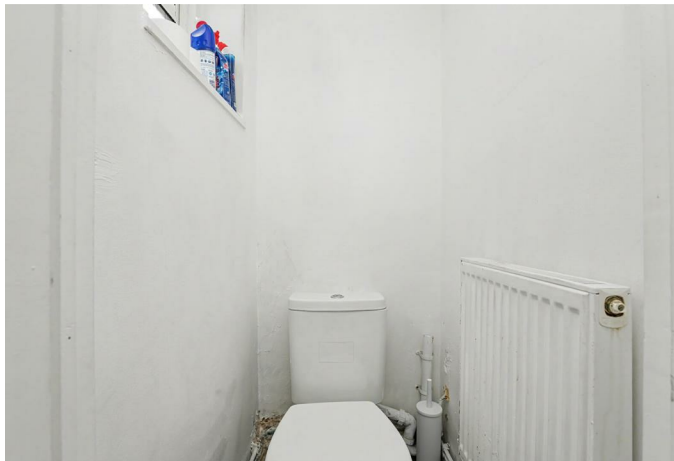
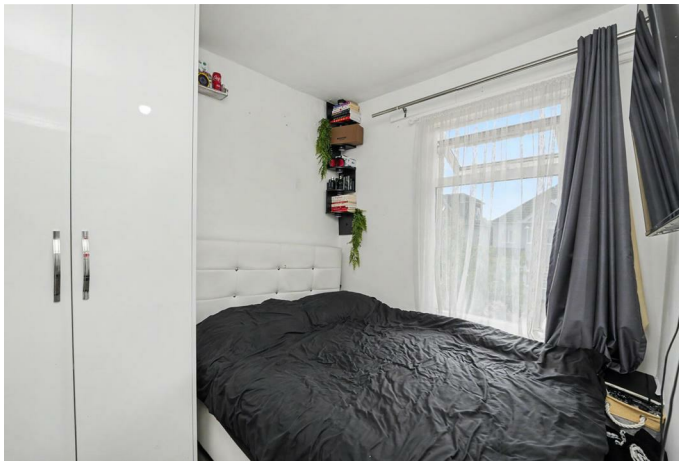
Ground floor WC,

Good size rear garden,

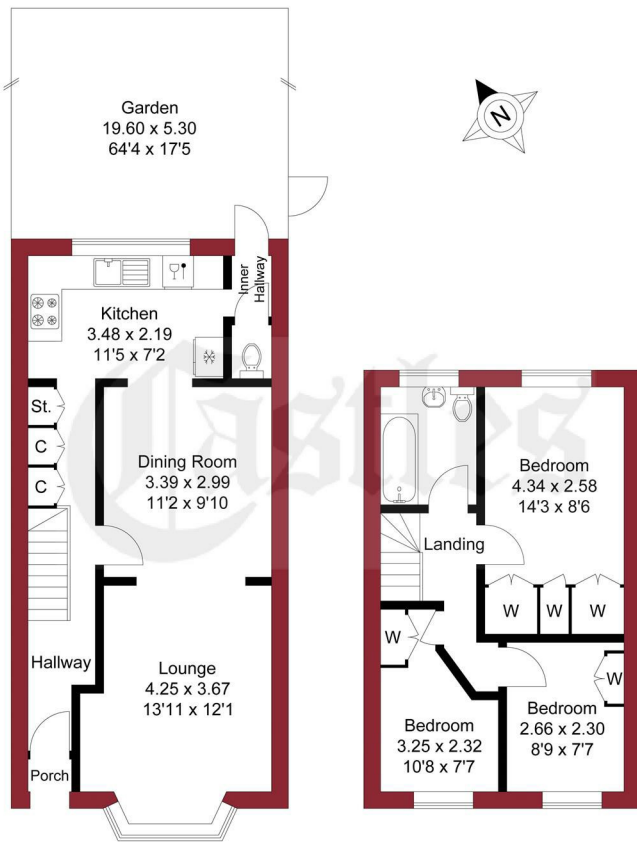
1st floor bathroom,

Ideal first time buy or buy to let.





APPROXIMATE GROSS INTERNAL AREA
73.76 sqm / 793.94 sqft

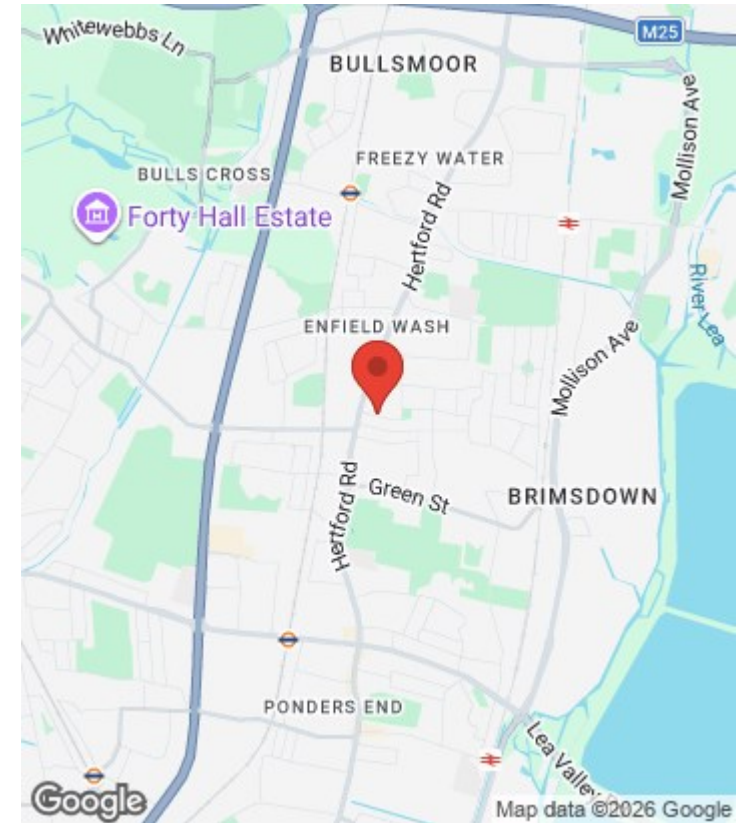


GROUND FLOOR

FIRST FLOOR

THIS PLAN IS FOR ILLUSTRATION ONLY AND MAY NOT BE REPRESENTATIVE OF THE PROPERTY

For a guide to the area please scan this code for more information



House - End Terrace

Freehold

Council: Enfield

Council Tax Band: D

Agents Note: Whilst every care has been taken to prepare these particulars, they are for guidance purposes only. All measurements are approximate and are for general guidance purposes only and whilst every care has been taken to ensure their accuracy, they should not be relied upon and potential buyers/tenants are advised to recheck the measurements



OFFICE ADDRESS

243 - 245 Hertford Road
Enfield
London
EN3 5JJ

OFFICE DETAILS

0208 804 8000
enfield@castles.london
<https://www.castles.london>

