



CRESCENT LANE, SW4

£500,000

- Two double bedrooms
- Two bathrooms
- Top floor
- Off street parking
- Abbeville Village
- Energy rating: C





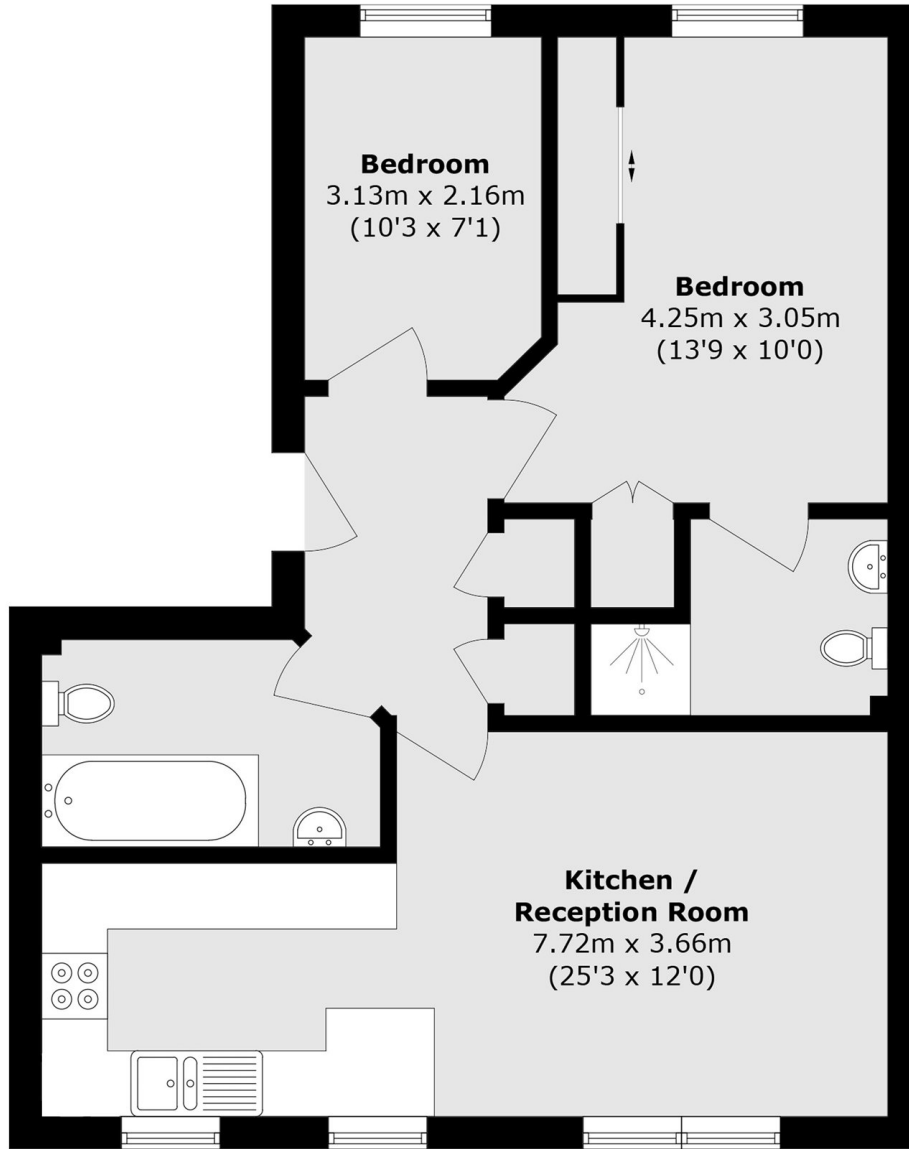
## ABOUT THE HOME

Guide Price £500,000 - £550,000. A modern two bedroom, two bathroom top floor apartment located in a private gated development in Abbeville Village.

Crescent Lane is a much sought after residential road within easy reach of Clapham Common and its many amenities, including the independent shops, cafés and bars of Abbeville Village, Clapham Old Town and Clapham High Street. Clapham Common (Northern line) Underground offers direct commuting to the City and West End, along with numerous frequent bus services running close by.







Total area (approx.): 62.8 sq. m (675.9 sq. ft)

#### JACKSONS CLAPHAM

73 Abbeville Road, London,  
SW4 9JN

Sales: 020 8487 3177

Lettings: 020 8487 3178

Energy Rating: C We aim to make our particulars both accurate and reliable. However they are not guaranteed; nor do they form part of an offer or contract. If you require clarification on any points then please contact us, especially if you're traveling some distance to view. Please note that appliances and heating systems have not been tested and therefore no warranties can be given as to their good working order.