

ADMIRALTY AVENUE, E16

£2,400 pcm

Two bedroom two bathroom apartment with 841 sq ft of living space and two private balconies. Residents have access to The Clubhouse with gym, pool, sauna, steam room and jacuzzi, plus 24 hour concierge and on site security.

- Two Bedroom
- Two Bathroom
- 841 Sq Ft
- Wood Floors
- Open Plan
- Two Private Balconies

Internal area:

78.1 sq.m / 841 sq.ft

Living area:

7235 mm x 4600 mm

Bedroom 1:

4635 mm x 2850 mm

Bedroom 2:

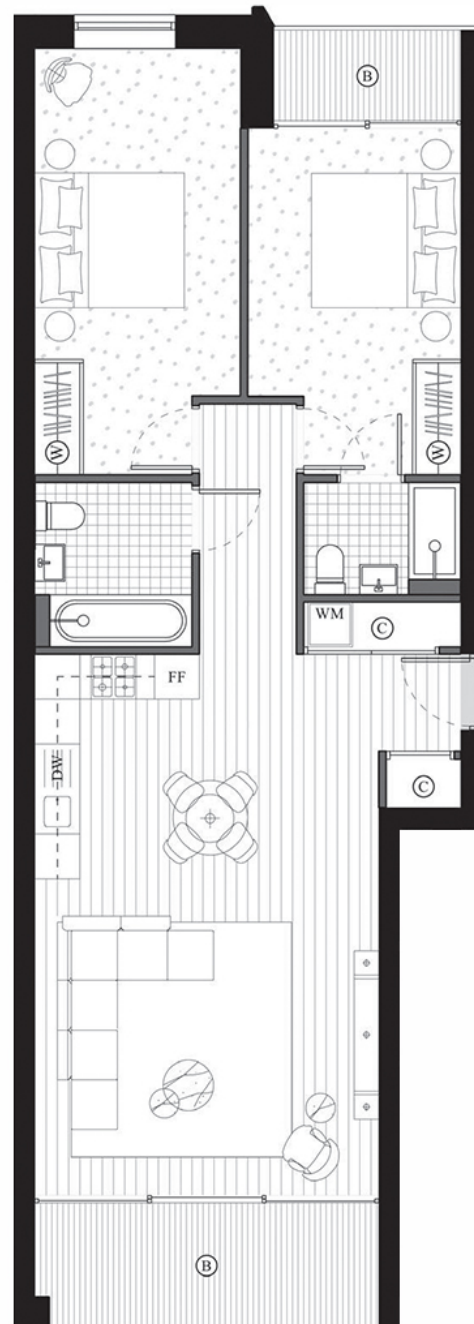
5700 mm x 2750 mm

Balcony 1:

7.6 sq.m / 82 sq.ft

Balcony 2:

3.0 sq.m / 32 sq.ft



LiFE RESIDENTIAL

16 Royal Crest Avenue,
London, E16 2TQ
Sales: 020 3846 3332
Lettings: 020 3846 3311

Energy Rating: B. We aim to make our particulars both accurate and reliable. However they are not guaranteed; nor do they form part of an offer or contract. If you require clarification on any points then please contact us, especially if you're traveling some distance to view. Please note that appliances and heating systems have not been tested and therefore no warranties can be given as to their good working order.