



95 Skipton Close

Stevenage, Hertfordshire, SG2 8TW

Gavin Mills
POWERED BY

UK



95 Skipton Close

Guide Price £350,000

A four-bedroom end-of-terrace home, situated in this popular residential area on the southside of Stevenage and offered for sale with no upper chain.

Originally a three-bedroom home, currently configured as four bedrooms, the property is conveniently located for access to both Stevenage Town Centre and train station, as well as nearby Knebworth.

Ground floor accommodation

The front porch, accessed via a sliding glazed door, has large storage cupboards built in to either side, and a front door opening into a spacious entrance hall, with a WC/utility room.

The open plan kitchen/dining room has a range of fitted wall and base level units with integrated appliances, including a double fridge/freezer, a dishwasher and an electric oven with an induction hob and extractor unit above. The sitting room has a window to the front aspect and a sliding door leading to the conservatory.

First-floor accommodation

Originally a three-bedroom, the current vendors have divided one of the double bedrooms into two, creating an extra room. There is a family bathroom along with an airing cupboard and a separate storage cupboard.

Outside

To the front, the garden is laid to a paved patio and lawn. To the rear, the garden has gated access and is laid to a paved patio and lawn with a raised decked seating area and retained flower and shrub beds.

Communal parking is available.





Call Gavin Mills to arrange a viewing on **07971 807 341**

Approximate Gross Internal Area
 Ground Floor = 53.4 sq m / 575 sq ft
 First Floor = 38.1 sq m / 410 sq ft
 Total = 91.5 sq m / 985 sq ft

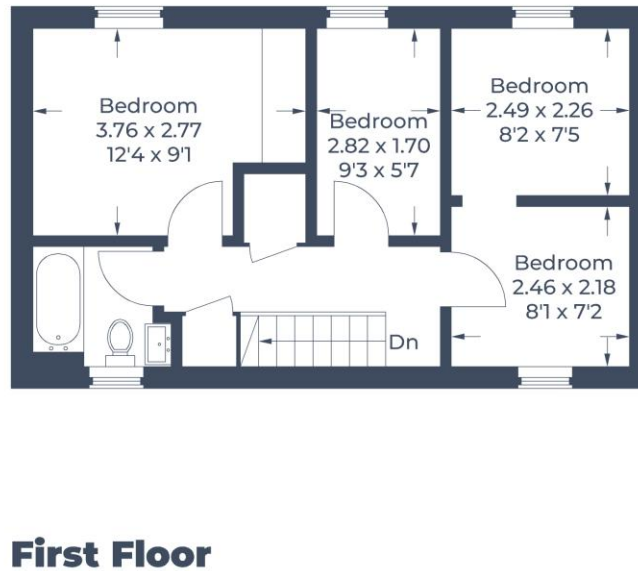
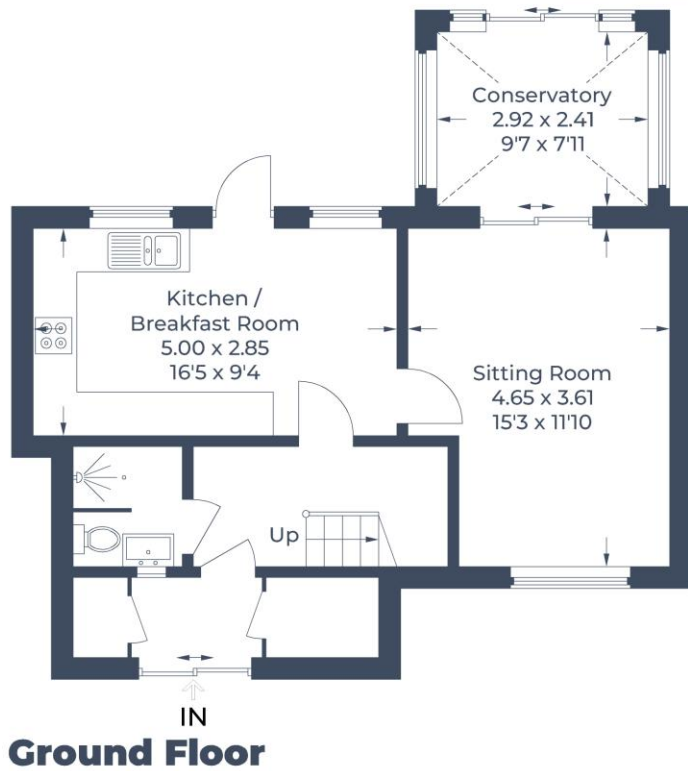


Illustration for identification purposes only,
 measurements are approximate, not to scale.
 © CJ Property Marketing Produced for EXP



Score	Energy rating	Current	Potential
92+	A		
81-91	B		
69-80	C		76 C
55-68	D	62 D	
39-54	E		
21-38	F		
1-20	G		

Tel: 07971 807 341

Email: gavin.mills@exp-uk.co.uk

www.gavin-mills.co.uk

Gavin Mills



IMPORTANT: we would like to inform prospective purchasers that these sales particulars have been prepared as a general guide only. A detailed survey has not been carried out, nor the services, appliances and fittings tested. Room sizes should not be relied upon for furnishing purposes and are approximate. If floor plans are included, they are for guidance only and illustration purposes only and may not be to scale. If there are any important matters likely to affect your decision to buy, please contact us before viewing the property.