

- Six established stone-built holiday cottages in rural courtyard
- Total accommodation revenue circa £110,000 in 2025
- Total floor area 348.6 sq. m. (3,753 sq. ft.)
- Fully operational holiday letting business opportunity
- Located 2 miles from Bamburgh & Northumberland Coast AONB
- Popular tourist location near castles, beaches, and attractions
- Site area 0.165 Hectares / 0.408 Acres
- Character cottages with modern upgrades throughout
- Generous parking, private gardens, and stone outbuildings



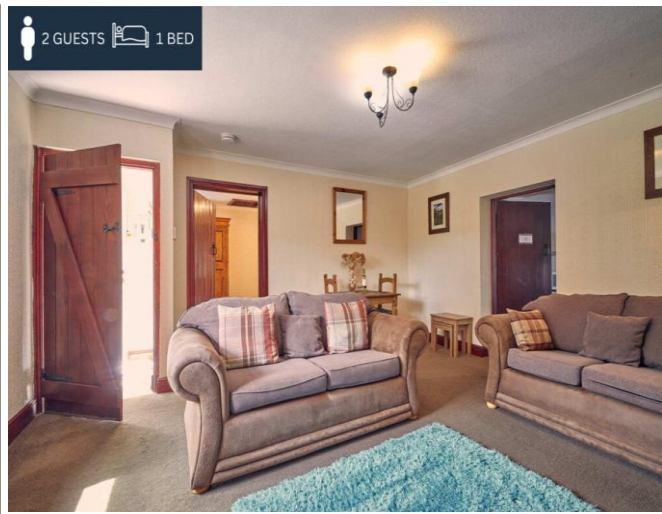
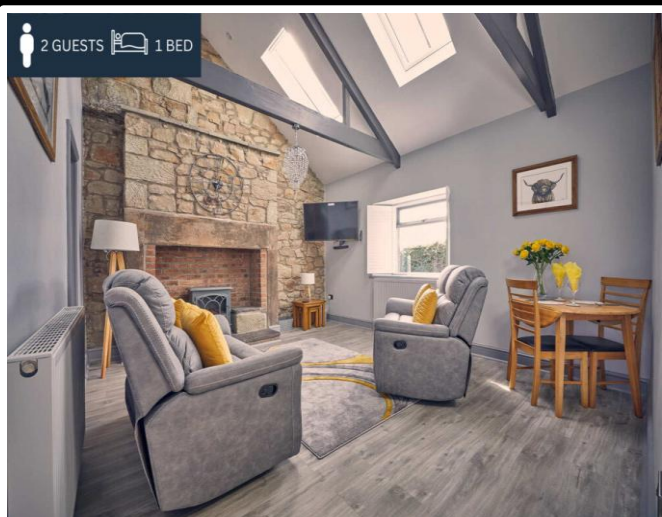
Established Holiday Cottage Complex
Bradford Cottages, Belford,
Near Bamburgh, Northumberland
NE70 7JT

Auction Guide Price £850,000 +

For Sale by Auction. Live Online Auction, bidding starts
Thursday 28th May 2026. T's & C's apply.
see website: agentspropertyauction.com

Tenure: Freehold

RMS | Rook
Matthews
Sayer



Location

The subject properties are located within the rural hamlet of Bradford, a peaceful countryside setting situated between the popular villages of Belford, Lucker and the historic coastal village of Bamburgh, within the county of Northumberland in the North East of England.

Bradford is a small rural settlement with a very low population, offering a tranquil and unspoilt environment ideally suited to holiday accommodation. The properties benefit from proximity to several key visitor destinations and established population centres, including Seahouses and the historic market town of Alnwick, both of which provide a range of amenities, visitor attractions and transport links. The surrounding area forms part of the celebrated Northumberland Coast Area of Outstanding Natural Beauty, renowned for its dramatic coastline, rolling countryside and award-winning sandy beaches. The iconic Bamburgh Castle, one of the region's most recognisable landmarks, lies a short distance away, drawing significant visitor numbers throughout the year. Other notable attractions within easy reach include the internationally acclaimed Alnwick Garden, as well as the scenic landscapes of the Cheviot Hills. The location offers an ideal base from which to explore Northumberland's wild countryside, heritage sites and coastal attractions, making it particularly well suited to the holiday-letting market. The combination of rural tranquillity, proximity to major tourist destinations and access to some of the region's most attractive beaches supports strong year-round appeal for both short-break and longer-stay visitors.

Description

A superb opportunity to acquire a fully established holiday cottage complex comprising six attractive stone-built cottages, set within a peaceful rural courtyard setting close to the Northumberland coast. The property comprises a charming courtyard-style development of six individual one-bedroom holiday cottages, constructed in traditional Northumberland stone and arranged around a central parking and turning area. The cottages include one detached cottage, two semi-detached cottages, and three two-storey terraced cottages, each offering well-proportioned accommodation suited to holiday letting or residential use.

Set within the red line boundary, the site extends to approximately 0.41 acres, featuring generous communal parking, private garden areas, and a range of useful stone-built outbuildings suitable for cycle storage, maintenance use, or ancillary purposes. The cottages have been tastefully upgraded over time and retain a wealth of character features including exposed beams, vaulted ceilings, stone fireplaces, and traditional detailing, combined with modern kitchens, shower rooms, and double glazing.

www.rookmatthewssayer.co.uk

T: 0191 212 0000 E: commercial@rmsestateagents.co.uk

RMS | Rook
Matthews
Sayer

The development enjoys a tranquil rural setting surrounded by open farmland and mature trees, providing guests with a peaceful countryside environment while remaining conveniently close to the coast. The central courtyard provides ample off-road parking for multiple vehicles, while individual cottages benefit from private seating areas and gardens overlooking surrounding countryside and woodland.

Bradford House Cottages represent an excellent opportunity to acquire a ready-made holiday letting business within one of the UK's most sought-after tourism regions. The continued popularity of Northumberland as a visitor destination ensures strong ongoing demand for quality holiday accommodation, making this an appealing prospect for investors, lifestyle buyers, or those seeking to expand an existing holiday letting portfolio. Please note we have not inspected inside the properties, due to them being occupied by guests, the internal photos were provided by our clients.

Accommodation

Bluebell Cottage - Semi-detached cottage comprising a living / dining area, kitchen, double bedroom and shower room. Gross Internal Area 60.11 sq. m. (647 sq. ft.)

Lavendar Cottage - Semi-detached cottage comprising a living / dining area, kitchen, double bedroom and en-suite shower room. Gross Internal Area 57.37 sq. m (618 sq. ft.)

Rose Cottage - Detached cottage comprising a living / dining area, kitchen, double bedroom and bathroom. Gross Internal Area 47 sq. m. (506 sq. ft.)

Poppy Cottage • End-terrace cottage comprising a living / dining area, kitchen, double bedroom and shower room. Gross Internal Area 60.65 sq. m. (653 sq. ft.)

Daisy Cottage - Mid-terrace cottage comprising a living / dining area, kitchen, double bedroom and shower room. Gross Internal Area 60 sq. m. (646 sq. ft.)

Tulip Cottage - End-terrace cottage comprising a living / dining area, kitchen, double bedroom and shower room. Gross Internal Area 63.5 sq. m. (683 sq. ft.)





Total Floor Area

348.63 sq. m. (3,753 sq. ft.)

Measurement Type and Source of Areas

Provided by a third-party valuation report, we advise you seek confirmation.

Rateable Value

The 2026 Rating List entry is Rateable Value £3,650 - 1 & 2 Bradford Farm, Belford NE70 7JT

The 2026 Rating List entry is Rateable Value £1,825 - 3 Bradford Farm, Belford NE70 7JT

The 2026 Rating List entry is Rateable Value £4,200 - 4 & 5 Bradford Farm, Belford NE70 7JT

The 2026 Rating List entry is Rateable Value £1,825 - Tulip Cottage, Belford NE70 7JT

Title Number

ND219906

Tenure

Freehold

Auction

Live online auction, bidding starts Thursday 28th May 2026, terms and conditions apply, see website agentspropertyauction.com

Auction Guide Price

£850,000 +

Viewing Arrangements

Strictly by appointment through this office.

www.rookmatthewssayer.co.uk

T: 0191 212 0000 E: commercial@rmsestateagents.co.uk

RMS | Rook
Matthews
Sayer



YEAR	MONTH	ACCOMMODATION FARE	OWNER'S REV	OCCUPANCY	BOOKED NIGHTS
2025	Jan	£2,814.95	£2,791.72	20%	36
2025	Feb	£5,822.49	£5,805.43	53%	89
2025	Mar	£6,029.04	£5,976.15	52%	94
2025	Apr	£8,824.04	£8,582.93	71%	127
2025	May	£12,967.32	£12,207.76	87%	158
2025	Jun	£13,027.07	£12,489.26	95%	165
2025	Jul	£14,856.41	£13,822.30	97%	181
2025	Aug	£16,081.83	£15,070.44	93%	171
2025	Sep	£13,127.14	£12,450.38	94%	170
2025	Oct	£11,213.08	£10,826.44	84%	153
2025	Nov	£4,764.67	£4,496.28	32%	58
2025	Dec	£2,409.57	£2,305.71	26%	41

Information Notice

1. Particulars above are not a contract or offer or part of one. You should not rely on statements by Rook Matthews Sayer in the particulars or by word of mouth or in writing as being factually accurate about the property/business, its condition or its value. Rook Matthews Sayer has no authority to make any representations about the property, and accordingly any information given is entirely without responsibility. Any reference to alterations to, or use any part of the property does not mean that any necessary planning, building regulations or other consent has been obtained. A buyer or lessee must find out by inspection or in other ways that these matters have been properly dealt with and that all information is correct.
2. The photographs show only parts of the property as they appeared at the time taken.
3. Any areas, measurements and distances given are approximate only.
4. Each auction property is offered at a guide price and is also subject to a reserve price. The guide price is the level where the bidding will commence. The reserve price is the seller's minimum acceptable price at auction and the figure below which the auctioneer cannot sell. The reserve price, which may be up to 10% higher than the guide price, is not disclosed and remains confidential between the seller and the auctioneer. Both the guide price and the reserve price can be subject to change up to and including the day of the auction. The successful buyer pays a £2,000 +VAT (total £2,400) Auction Administration Fee. Joint Agents: The Agents Property Auction Ltd. Tel 01661 831360 Terms and conditions apply see: agentspropertyauction.com. Ref I454 (Version 1) Prepared 29th April 2026

www.rookmatthewssayer.co.uk

T: 0191 212 0000 E: commercial@rmsestateagents.co.uk

RMS | Rook
Matthews
Sayer



www.rookmatthewssayer.co.uk

T: 0191 212 0000 E: commercial@rmsestateagents.co.uk

RMS | Rook
Matthews
Sayer



www.rookmatthewssayer.co.uk

T: 0191 212 0000 E: commercial@rmsestateagents.co.uk

RMS | Rook
Matthews
Sayer

Bamburgh Castle



Important Note: Rook Matthews Sayer (RMS) for themselves and for the vendors or lessors of this property, whose agents they are, give notice that these particulars are produced in good faith, are set out as a general guide only and do not constitute part or all of an offer or contract. The measurements indicated are supplied for guidance only and as such must be considered incorrect. Potential buyers are advised to recheck the measurements before committing to any expense. RMS has not tested any apparatus, equipment, fixtures, fittings or services and it is the buyer's interests to check the working condition of any appliances. RMS has not sought to verify the legal title of the property and the buyers must obtain verification from their solicitor. No persons in the employment of RMS has any authority to make or give any representation or warranty whatever in relation to this property.

Money Laundering Regulations – intending purchasers will be asked to produce original identification documentation at a later stage and we would ask for your co-operation in order that there will be no delay in agreeing the sale. We will also use some of your personal data to carry out electronic identity verification. This is not a credit check and will not affect your credit score.

Established Holiday Cottage Complex

**Bradford Cottages, Belford,
Near Bamburgh, Northumberland
NE70 7JT**

Tenure: Freehold

Auction Guide Price £950,000 +

RMS | Rook
Matthews
Sayer