



Holland Grove, SW9

£495,000

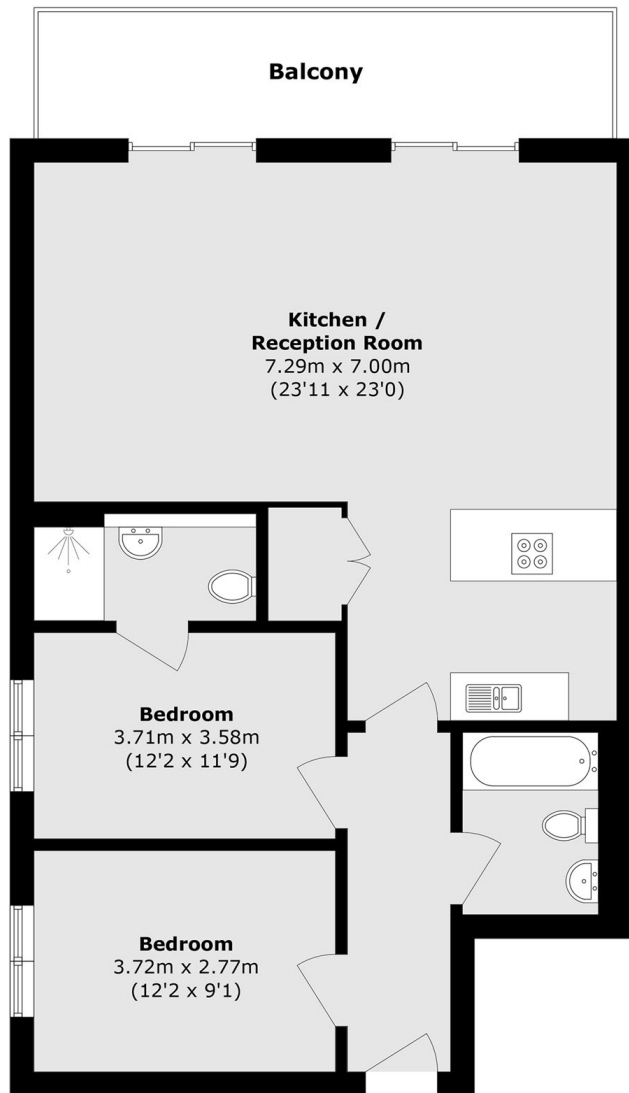
A quality 849sq.ft two double bedroom, two bathroom flat in excellent condition. Positioned on the first floor and with a south facing aspect this spacious home is flooded with natural light. The large reception room leads out onto full width balcony and combines brilliantly with the spacious kitchen. Furthermore there is an ensuite bathroom, a family bathroom and excellent storage throughout. Sold with no onward chain.

Quietly located between Oval and Camberwell and within a ten minute walk of Oval Underground Station (Northern Line). This excellent location has an array of local shops, cafes, pubs and is just a short walk of both Kennington Park and Myatt's Field Park. There is an excellent amount of bus routes close by with access to the City, Victoria, Brixton and beyond.

Features

- Two Double Bedrooms
- No Onward Chain
- 849sq.ft
- Two Bathrooms
- South Facing Aspect
- Excellent Location

Holland Grove, London, SW9



Second Floor

Total area (approx.): 78.9 sq. m (849.3 sq. ft)

Balcony area (approx.): 9.4 sq. m (101.2 sq. ft)