



51 Breacla, Lancaster, LA1 4NU

51 Breacla, Lancaster,

The property at a glance

4  2  1 

- Detached Home with 4 bedrooms
- Two family bathrooms for added convenience
- Utility/boot room with external access
- Separate downstairs toilet
- En-suite to master bedroom
- Designed for luxury family living with exceptional space and style
- High Ceilings
- High specification
- Freehold
- CT - TBC

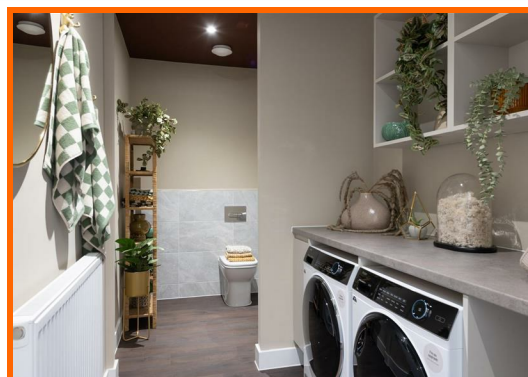
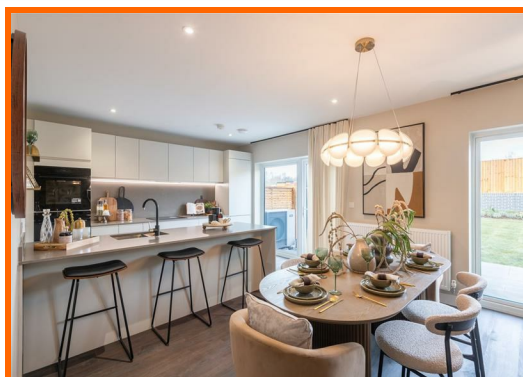


Get in touch today

01524 401402
info@gfproperty.co.uk
gfproperty.co.uk

£495,000

Get to know the property



More than just a four bed...

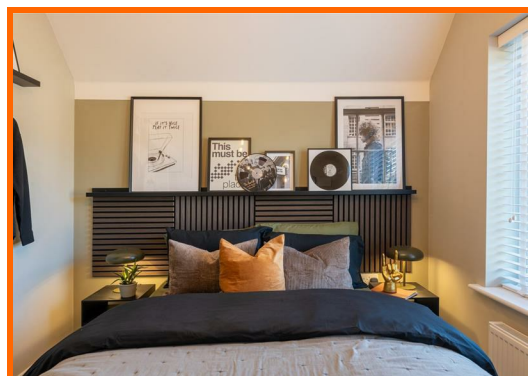
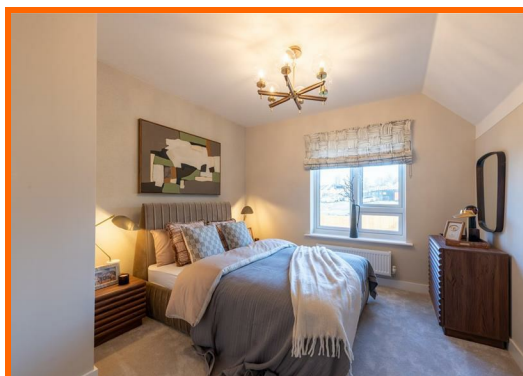
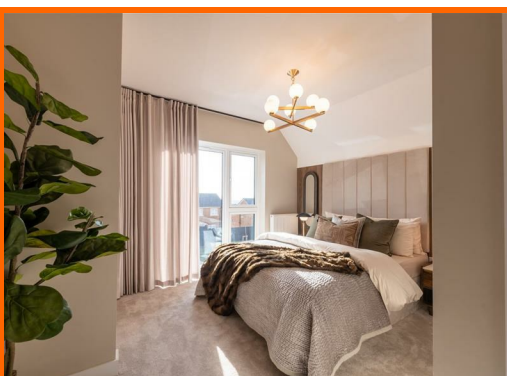
At 1,385 square feet, this beautifully designed four-bedroom home offers a perfect blend of space, functionality, and style. The expansive kitchen, featuring a breakfast bar, is ideal for family meals, entertaining, or simply enjoying your morning coffee. The cozy lounge provides a warm and inviting space to relax and unwind.

On the ground floor, the cleverly combined 'lootility' — a utility room and downstairs toilet — ensures practicality while maximizing space. Upstairs, you'll find four generously sized bedrooms, including a master with an ensuite for added convenience and privacy. A spacious family bathroom completes the upper floor, making it perfect for modern family living.

Large family bathroom

4 double bedrooms

Spacious garden



51 Breacla, Lancaster, LA1 4NU



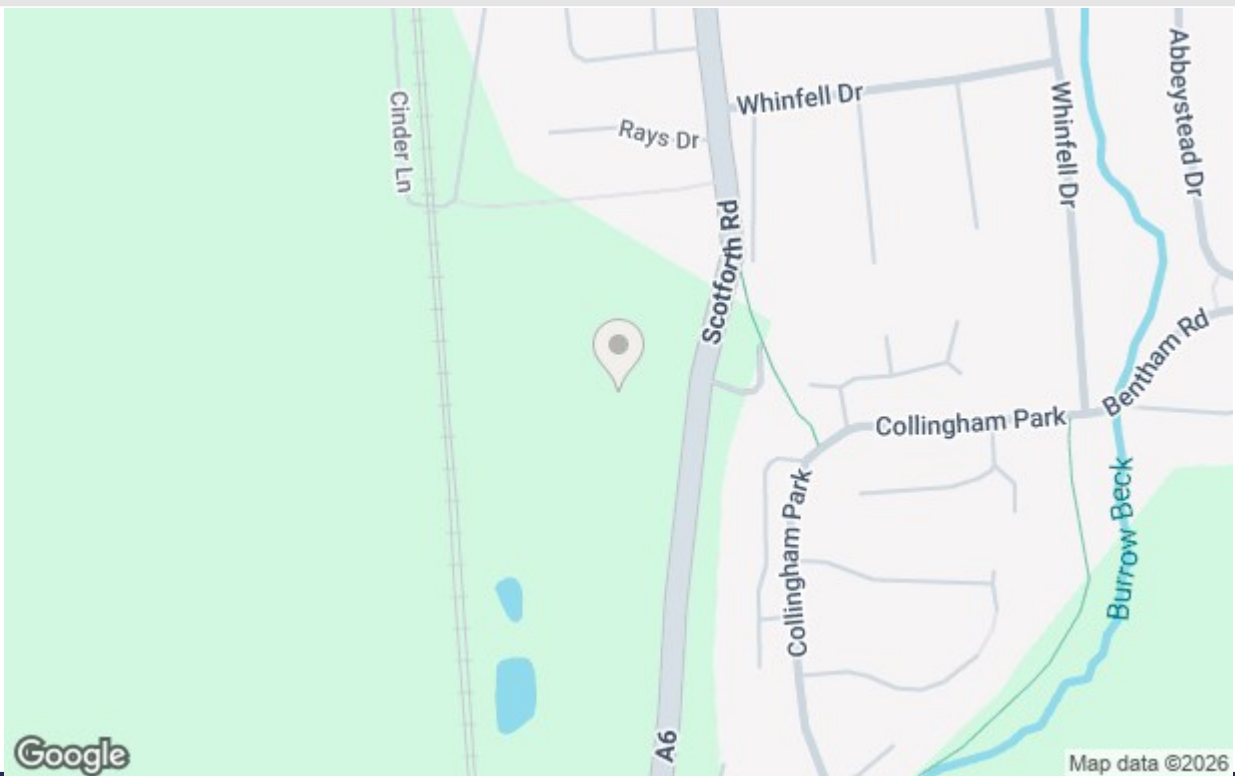
Get in touch today

01524 401402

info@gfproperty.co.uk

gfproperty.co.uk

Take a nosey round



Get in touch today

01524 401402
info@gfproperty.co.uk
gfproperty.co.uk

Energy Efficiency Rating	Current	Potential
Very energy efficient - lower running costs		
(92 plus) A		
(81-91) B		
(69-80) C		
(55-68) D		
(39-54) E		
(21-28) F		
(1-20) G		
Not energy efficient - higher running costs		
England & Wales	EU Directive 2002/91/EC	

Environmental Impact (CO ₂) Rating	Current	Potential
Very environmentally friendly - lower CO ₂ emissions		
(92 plus) A		
(81-91) B		
(69-80) C		
(55-68) D		
(39-54) E		
(21-38) F		
(1-20) G		
Not environmentally friendly - higher CO ₂ emissions		
England & Wales	EU Directive 2002/91/EC	