



Emlyn Gardens, W12

£576 Per week

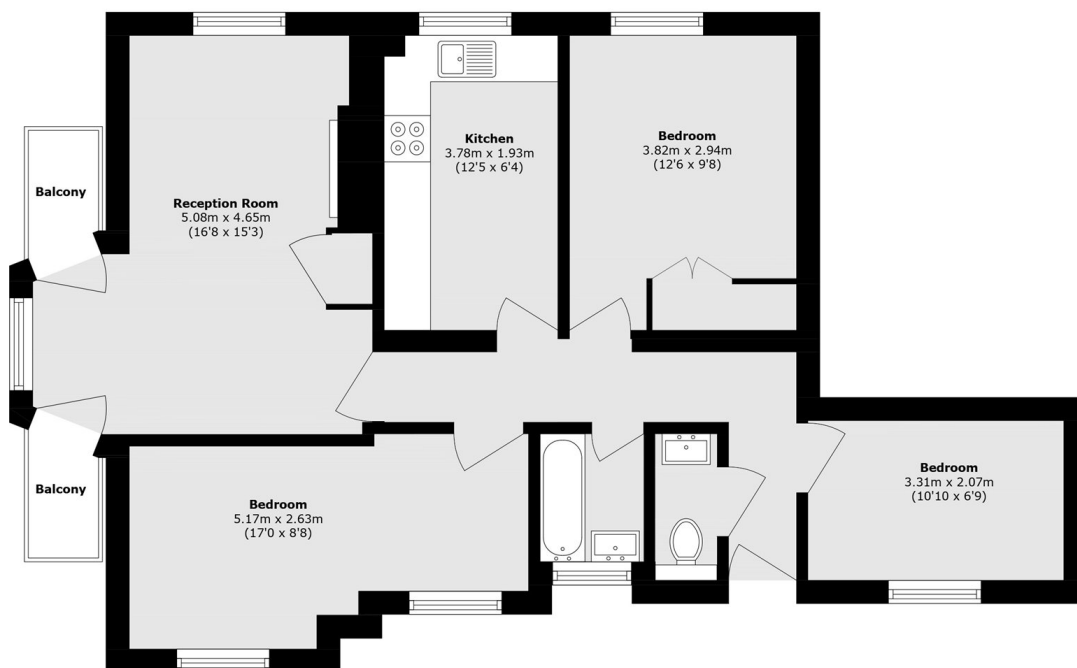
This recently refurbished three double bedroom property has a separate fully fitted kitchen, a bright reception with two balconies and a modern tiled bathroom with a separate W.C.

Emlyn Road is situated between Wendell Park, Bedford Park and the Goldhawk Road. Situated under half a mile from both Stamford Brook and Turnham Green underground station.

Features

- Purpose Built
- Three Bedrooms
- Private Balcony
- Recently Refurbished
- Excellent Location
- Wendell Park

Emlyn Gardens, London, W12



Total area (approx.): 76.1 sq. m (819.1 sq. ft)
Balcony area (approx.): 2.7 sq. m (29.1 sq. ft)