



## Battersea Bridge Road, SW11

£3,750 Per calendar month

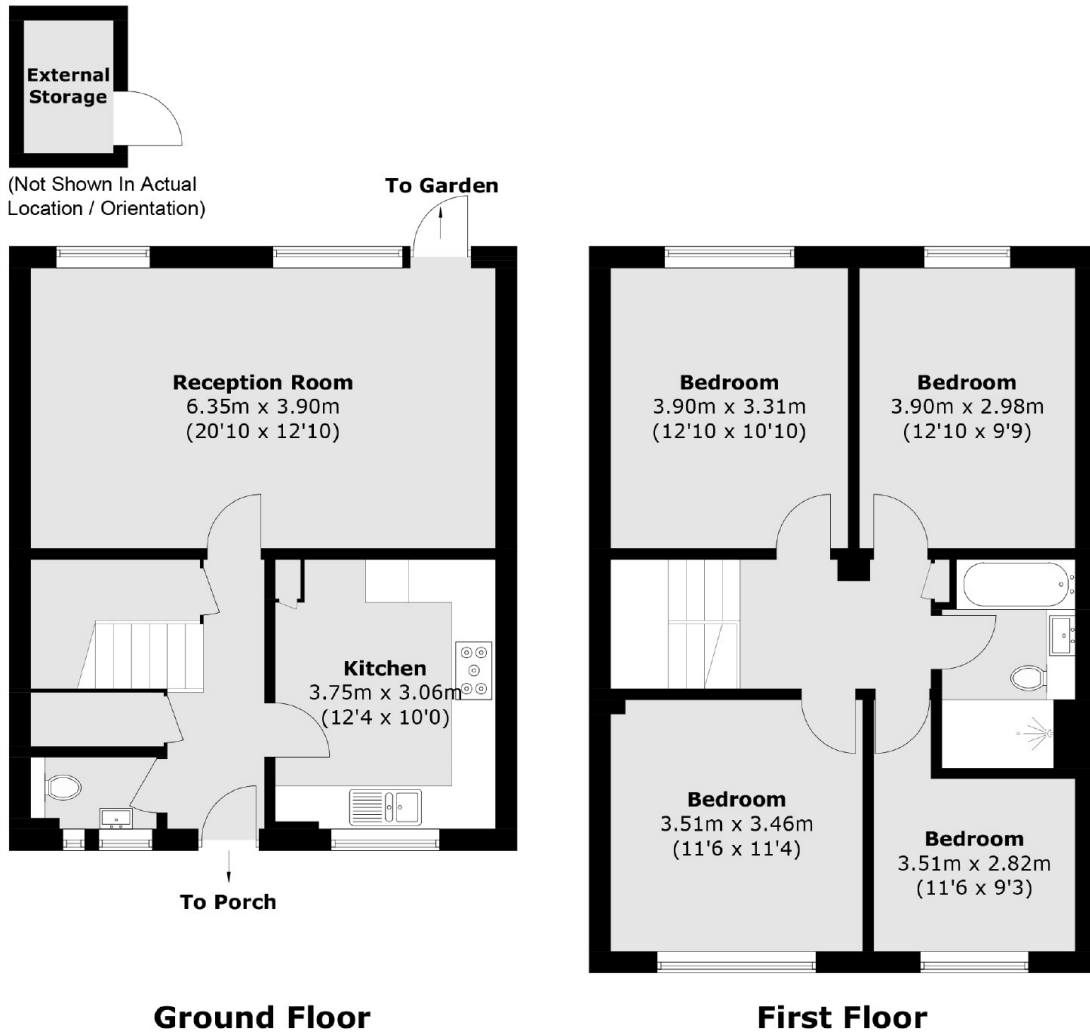
A split level four bedroom bed flat located on Battersea Bridge road. The property consists of a spacious reception that leads onto a private garden, a separate modern kitchen and a modern bathroom and separate WC.

There are lovely little boutique shops all round, great restaurants and bars close by with easy access to Battersea Park and Chelsea.

### Features

- Four Bedrooms
- Prime Location
- Wooden Flooring
- Maisonette
- Private Garden
- Separate WC

# Battersea Bridge Road, London, SW11



Total area (approx.): 111.9 sq. m (1,204.4 sq. ft)  
External Storage (approx.): 2.3 sq. m (24.7 sq. ft)