



Flat 2 14 Hughenden Road, High Wycombe, Buckinghamshire, HP13 5DT

Asking Price | £1,000

Property Description

A well-presented one-bedroom first floor maisonette located on Hughenden Road, just moments from High Wycombe town centre.

Finished to a modern standard throughout, the property offers a bright open-plan kitchen/living area. The accommodation further comprises a double bedroom and a stylish, well-appointed bathroom. Additional benefits include a boarded loft with ladder access, providing excellent additional storage.

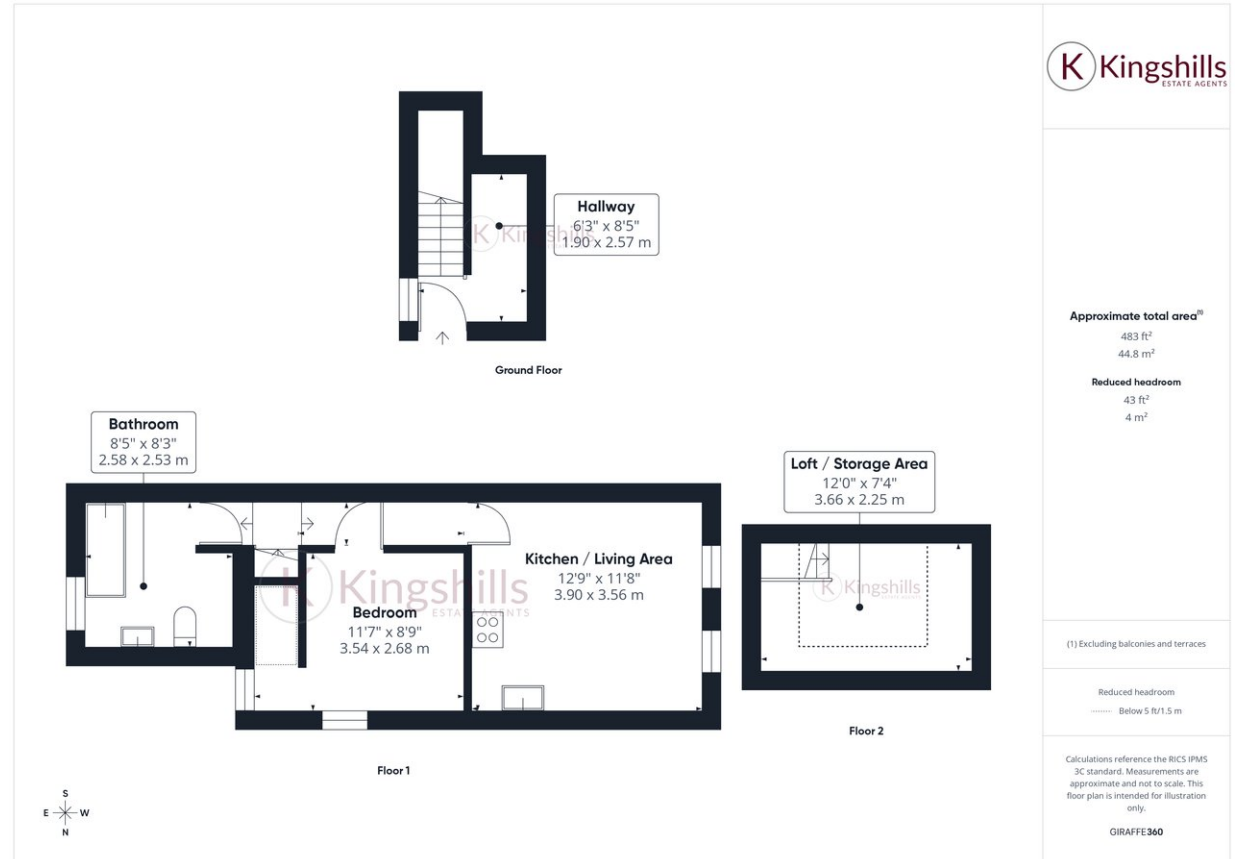
Ideally positioned within close proximity to High Wycombe town centre, the property benefits from a wide range of shops, restaurants, and leisure facilities. High Wycombe train station is easily accessible, offering direct services to London Marylebone, while the nearby M40 provides excellent road links for commuters.

Available to rent, this property is ideally suited to a professional individual or couple seeking a modern home in a convenient and well-connected location.

Please note there is no parking is available.

COUNCIL TAX C

EPC RATING C



Kingshills Estate Agents
C1C Comet Studios
Amersham
Buckinghamshire
HP7 0PX

01494 939868
hello@kingshills.co.uk
kingshills.co.uk

Agents Note: Whilst every care has been taken to prepare these particulars, they are for guidance purposes only. All measurements are for general guidance purposes only and whilst every care has been taken to ensure accuracy, they should not be relied upon and potential buyers/tenants are advised to recheck the measurements