

Avonmore Gardens

West Kensington, London, W14

 LAWSONRUTTER





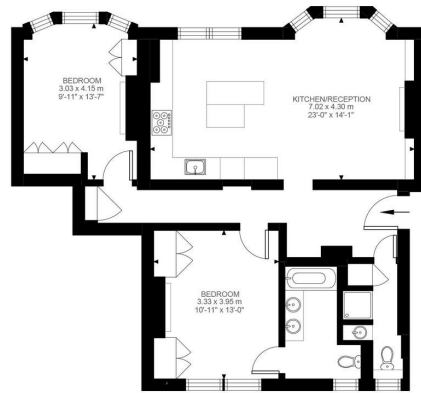
Avonmore Gardes

West Kensington, London, W14

Price Guide: £800,000



A beautifully presented two bedroom, two bathroom apartment positioned on the raised ground floor of an attractive period building on Avonmore Gardens, W14. The property has been fully refurbished throughout to a high standard, offering a clean and contemporary finish while still retaining a sense of character. The accommodation comprises a bright and well-proportioned reception room with excellent ceiling height and large windows, allowing for an abundance of natural light. The separate kitchen is thoughtfully designed with modern cabinetry and integrated appliances, creating a practical yet stylish space. Both bedrooms are generously sized, with the principal bedroom benefitting from an en-suite bathroom. A second, well-appointed bathroom serves the remaining accommodation. The overall layout is well balanced, making the property suitable for both owner-occupiers and investors alike. Further benefits include a share of freehold, off-street parking, and the advantageous raised ground floor position which provides both privacy and improved natural light. Avonmore Gardens is a quiet residential street ideally located for access to Kensington Olympia and West Kensington, along with the wide range of amenities, restaurants and green spaces found in Kensington, Hammersmith and the surrounding areas.



First Floor
847 ft²

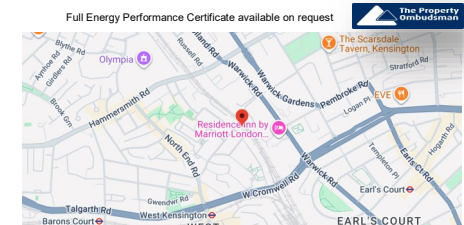
Fully refurbished throughout | Off street parking | Raised ground floor | Two bathrooms Character features | Gated development | 0.3 Miles from West Kensington Station
Share of Freehold | 847 Sq. Ft (78.67 Sq. M)

All viewings by appointment through our **West Kensington Office:**

T: 020 7385 5020
E: westken@lawsonrutter.com

1 Barons Court Road, London
W14 9DP
www.lawsonrutter.com

In accordance with the Property Misdescription Act 1991, we wish to emphasise that the information given in these particulars is intended to help you decide whether you wish to view this property. Whilst every care is taken to ensure the accuracy of these particulars please note that all measurements are approximate and we are, for the accuracy of other information, reliant on what the seller has provided. We strongly recommend that you rely on your own inspections and those of your advisors to establish the details of any aspects which are of particular importance. Please note that we have not undertaken any survey of the property or the appliances within it and the buyer must rely on their own investigations prior to exchange of contracts.



Avonmore Road, W14
Approximate Gross Internal Area
78.67 SQ.M / 847 SQ.FT

Illustration for identification purposes only. Not to scale.
Floor Plan Drawn According To RICS Guidelines.



BRITISH
PROPERTY
AWARDS
2023

GOLD WINNER

ESTATE AGENT
IN W6



BRITISH
PROPERTY
AWARDS
2023

GOLD WINNER

ESTATE AGENT
IN W14