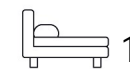


Living  
made  
better

Baquba Building  
Lewisham, SE13 7FF



Asking Price £260,000

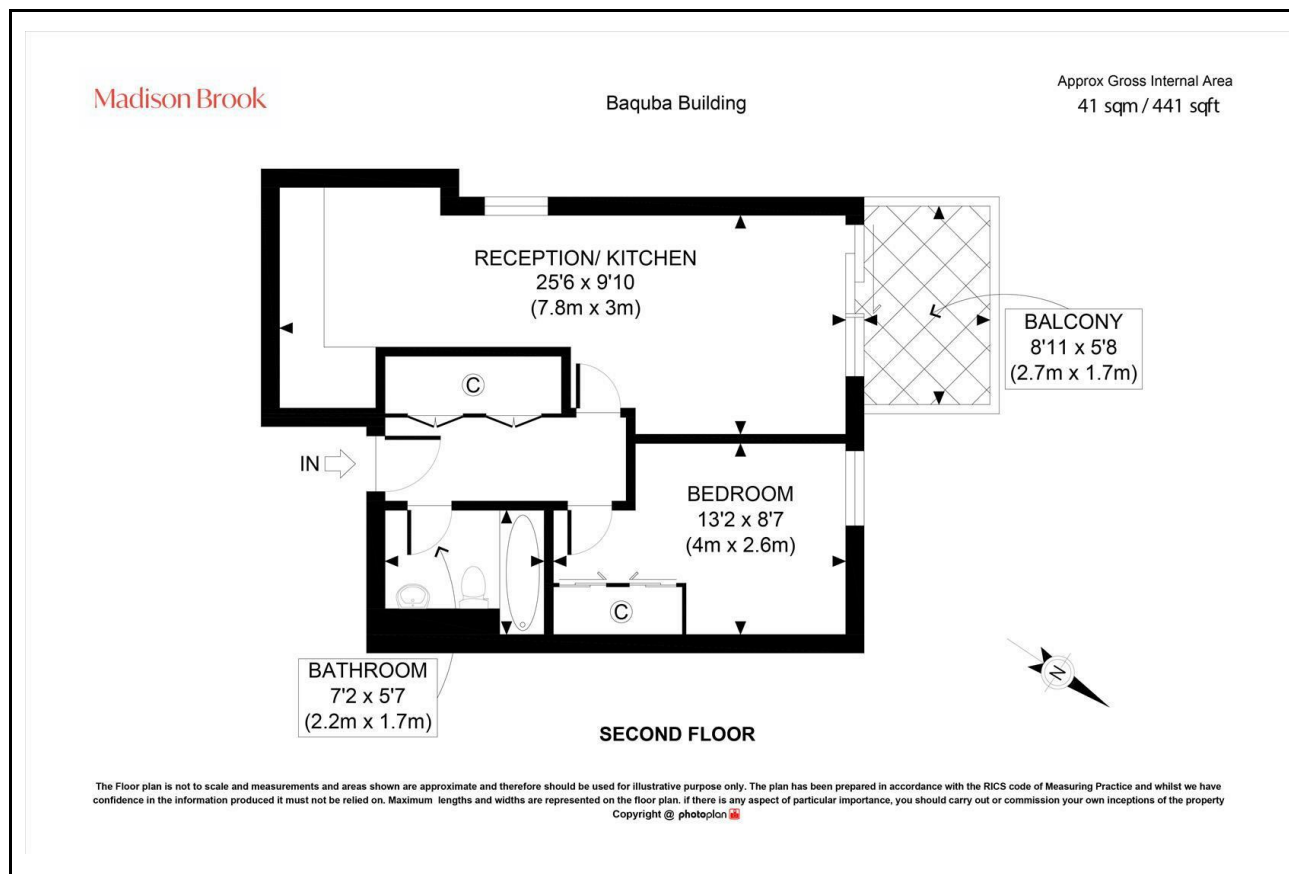
# Baquba Building, Lewisham, SE13 7FF

## Property Summary

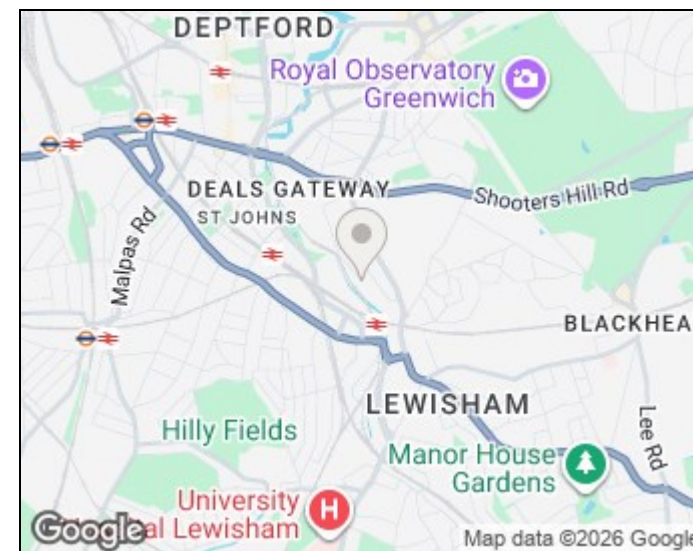
This modern one-bedroom apartment in the popular Baquba Building offers stylish second-floor living just minutes from key transport links. Measuring approx. 41 sqm (441 sqft), the property features a bright open-plan kitchen/reception with laminate flooring, integrated appliances, and direct access to a private balcony. The double bedroom includes a built-in wardrobe, and the contemporary bathroom is finished with a clean, modern design.

Offered chain free, the apartment benefits from a 24-hour concierge, on-site gym, and secure entry. Located just 0.2 miles from Lewisham Station and 0.1 miles from Elverson DLR.

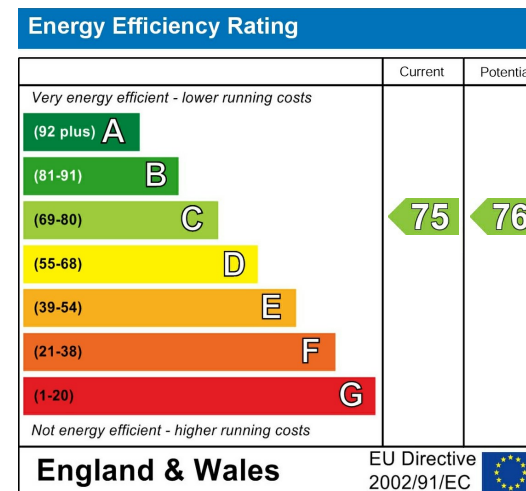
## Floorplan



## Area Map



## Energy Efficiency Graph



These particulars, whilst believed to be accurate are set out as a general outline only for guidance and do not constitute any part of an offer or contract. Intending purchasers should not rely on them as statements of representation of fact, but must satisfy themselves by inspection or otherwise as to their accuracy. No person in this firm's employment has the authority to make or give any representation or warranty in respect of the property.

43 Loampit Vale, Lewisham, London, SE13 7FT

Tel: 020 3946 6200 Email:

lewisham@madisonbrook.com

<https://madisonbrook.com/>