



# Bruges Place

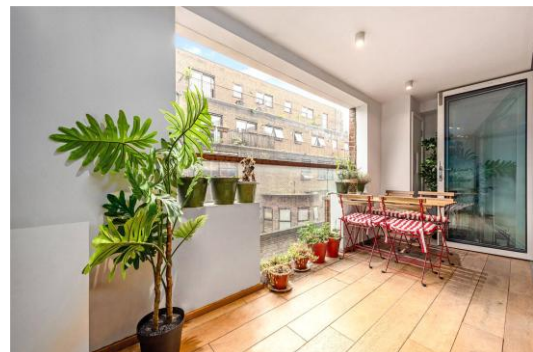
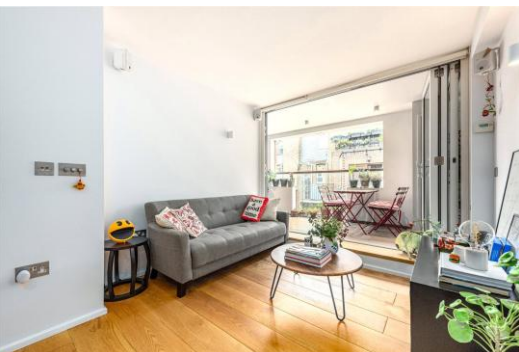
Camden, NW1

£2,500 per month  
(£576.92 per week)

SHORT LET This fantastic one double bedroom apartment is situated on the first floor within this highly desirable gated development. The property comprises; open plan reception room, master bedroom and three piece modern bathroom suite.

CHESTERTONS





# Bruges Place

## Camden, NW1

- ALL BILLS INCLUDED
- Gated secure Development
- Open Plan
- Excellent condition
- Spacious balcony





This fantastic one double bedroom apartment is situated on the first floor within this highly desirable gated development. The property comprises; open plan reception room, master bedroom and three piece modern bathroom suite.

This impressive apartment further benefits; bi-fold doors leading to its own balcony, gated security bike storage and video entry system. The property is offered furnished and available January.

Bruges Place is ideally situated moments from all the amenities of Camden and close to Camden Town Over Ground and Underground Stations.

**Minimum Term:** 1 months  
**Deposit Required:** £2,500.00  
**Local Authority:** Camden  
**Council Tax Band:**  
**EPC Rating:** B  
**Furnished**

Energy Efficiency Rating		
	Current	Potential
Very energy efficient - lower running costs		
(94-100) <b>A</b>		
(81-91) <b>B</b>	81	81
(69-80) <b>C</b>		
(55-68) <b>D</b>		
(39-54) <b>E</b>		
(21-38) <b>F</b>		
(1-20) <b>G</b>		
Not energy efficient - higher running costs		
England, Scotland & Wales EU Directive 2002/91/EC		

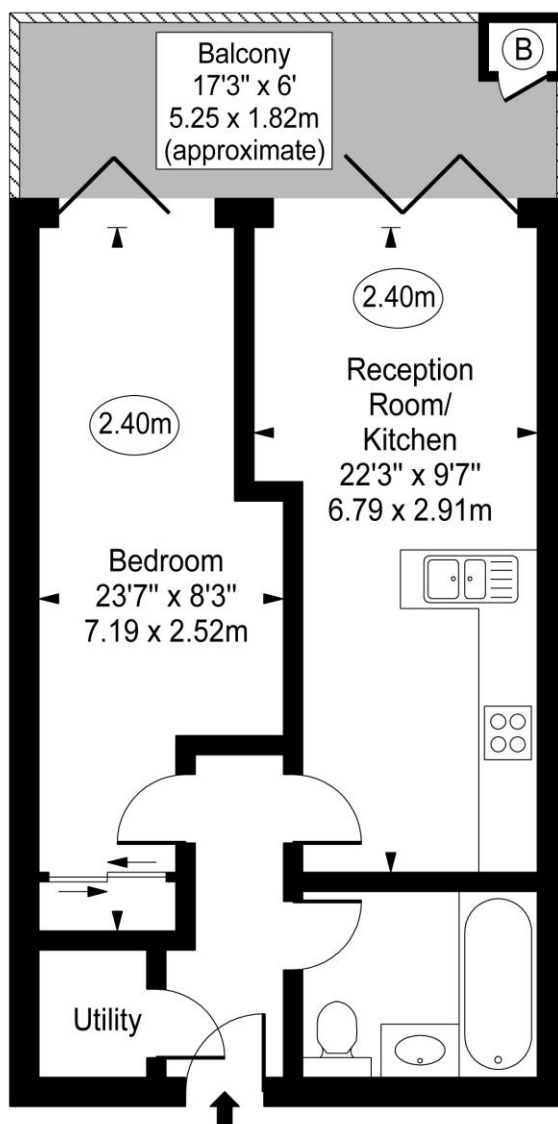
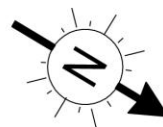
### *Chestertons Camden & Primrose Hill Lettings*

99-101 Parkway  
 London  
 NW1 7PP  
 camdentownlettingsusers@chestertons.co.uk  
 02072673574  
 chestertons.co.uk

Additional tenant charges apply (fees apply to non-AST tenancies only)  
 Tenancy Agreement Fee: £300  
 References per Tenant/Guarantor: £60  
 Inventory check (approx. £100 – £250 inc. VAT)  
 chestertons.co.uk/property-to-rent/applicable-fees

# Bruges Place

○ - Ceiling Height



## First Floor

Gross Internal Area - 478 Sq Ft - 44.40 Sq M

**Approx Gross Internal Area 478 Sq Ft - 44.40 Sq M**

For Illustration Purposes Only - Not To Scale

[www.goldlens.co.uk](http://www.goldlens.co.uk)

Ref. No. 015782.1R

