



OFFERS OVER

£155,000

Southend Grove
Strathaven, ML10 6QS

PROPERTY SUMMARY

Presented to the market in truly walk-in condition is this stylish, immaculately maintained, modern, two-bed, terraced villa. Evidently well-cared for, this lovely home showcases the current owner's impeccable taste with a stunning, recently fitted kitchen and luxurious bathroom. With its quiet cul de sac location, close proximity to Strathaven town centre, and pleasant Southwest facing garden enjoying the best of the sunshine, the property is sure to be popular with a broad section of buyers.

The bright and spacious layout of accommodation comprises; entrance vestibule, generous front facing lounge with downstairs storage, and feature fireplace with electric fire inset, substantial, dining size, recently fitted kitchen in a striking ink blue colour, with integrated appliances, and access to patio ideal for outdoor entertaining.

On the upper level accessed via a light and airy landing are two, well-proportioned bedrooms both of which benefit from excellent fitted storage. Completing the first floor is a luxurious, recently fitted shower room with clever 'stable' door making the most of the space.

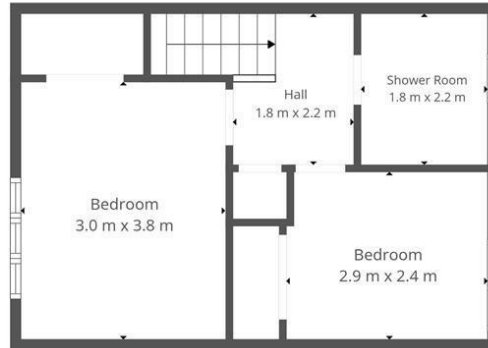
2











1st Floor



Ground Floor

This Floorplan Is Intended To Give An Indication Of The Layout Only.



OFFICE ADDRESS
 9 Townhead Street
 Strathaven
 ML10 6AB

OFFICE DETAILS
 01357 510088
 judithmcgill@cruive-
 estateagents.co.uk

LOCAL AUTHORITY

South Lanarkshire

TENURE

Freehold

COUNCIL TAX BAND

C

VIEWINGS

By prior appointment only

Energy Efficiency Rating		Current	Potential
<i>Very energy efficient - lower running costs</i>			
(82 plus) A			
(81-81) B			
(69-80) C		76	81
(55-68) D			
(39-54) E			
(21-38) F			
(1-20) G			
<i>Not energy efficient - higher running costs</i>			
Scotland		EU Directive 2002/91/EC	

Agents Note: Whilst every care has been taken to prepare these particulars, they are for guidance purposes only. All measurements are approximate and are for general guidance purposes only and whilst every care has been taken to ensure their accuracy, they should not be relied upon and potential buyers/tenants are advised to recheck the measurements