



19 Radbrook Hall, Radbrook Village, Shrewsbury, SY3 9BY

2 bedroom apartment — £300,000 Leasehold

19 Radbrook Hall, Radbrook Village, Shrewsbury, SY3 9BY

Coopergreenpooks.co.uk

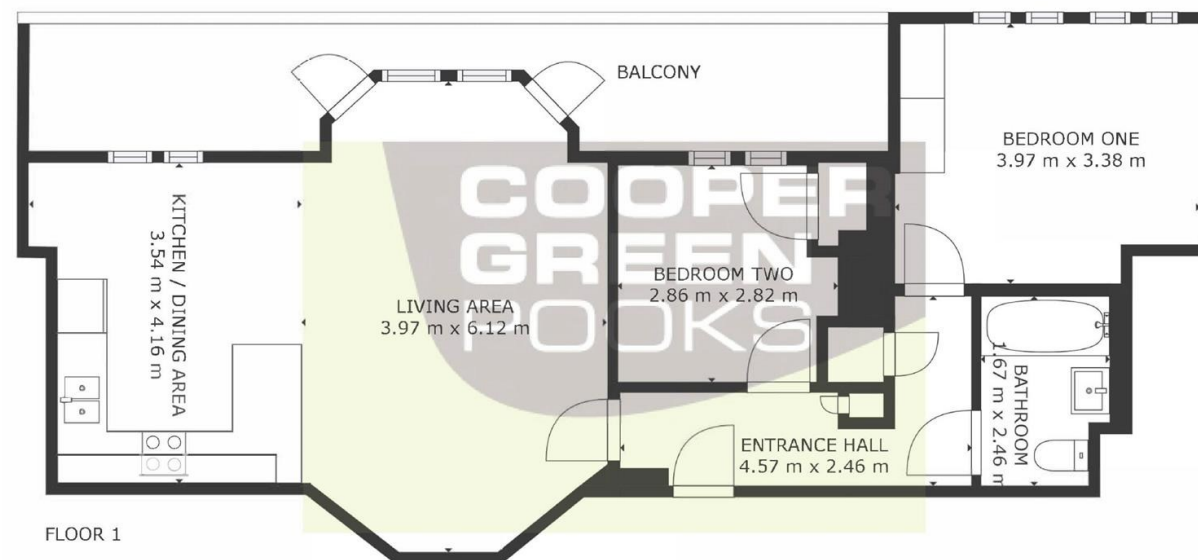
£300,000 Leasehold — 2 bedroom apartment

sales@cgpooks.co.uk

An impressive first floor apartment forming part of this beautiful mansion block within the sought after Radbrook Village development. Converted in 2021 by Floreat Homes, the property has a lovely outlook whilst offering stylish accommodation along with a private terrace and parking space.

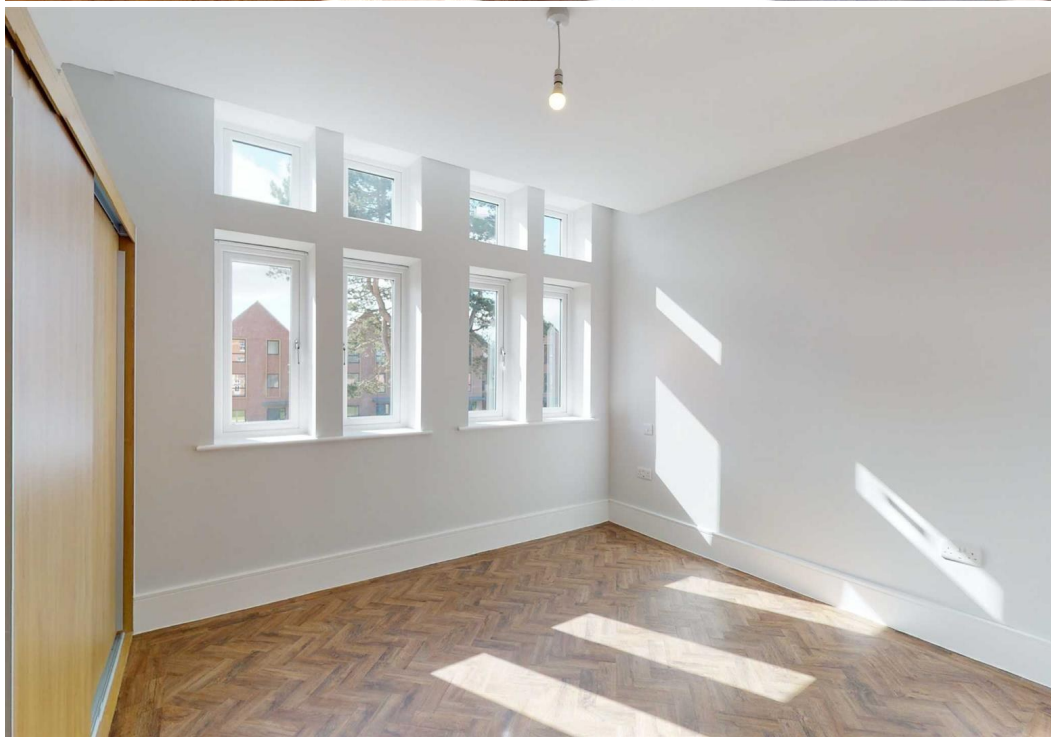
KEY FEATURES

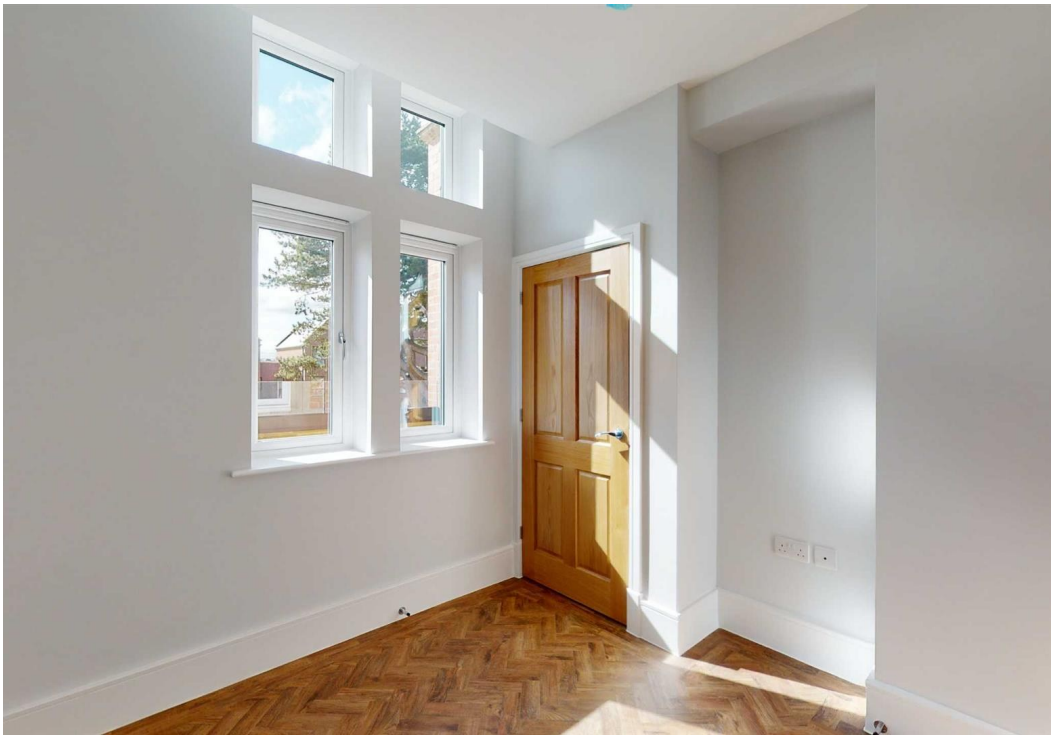
- Spacious and well-presented communal hall with original feature staircase to the first-floor landing area.
- Entrance hall with oak panelled doors to all rooms.
- Good sized open plan living/dining area and kitchen, with a large floor to ceiling bay window that has two separate doors which open onto the private terrace.
- Modern and extensive range of units to the kitchen area with integrated appliances, granite working surfaces and breakfast bar.
- Two double bedrooms with wardrobes and a well fitted bathroom.
- Double glazed windows and gas underfloor heating as well as parquet wood effect flooring in most rooms.
- Private parking space and access to the well-kept communal grounds.
- Very attractive and well-designed development, only about 1 mile from Shrewsbury town centre and within walking distance of Radbrook Green shopping complex.
- No onward chain



GROSS INTERNAL AREA
FLOOR 1: 71 m²
TOTAL: 71 m²
SIZES AND DIMENSIONS ARE APPROXIMATE, ACTUAL MAY VARY.









Cooper Green Pooks
3 Barker Street
Shrewsbury
SY1 1QF

www.cgpooks.co.uk
sales@cgpooks.co.uk
01743 276666



19 Radbrook Hall, Radbrook Village, Shrewsbury, SY3 9BY

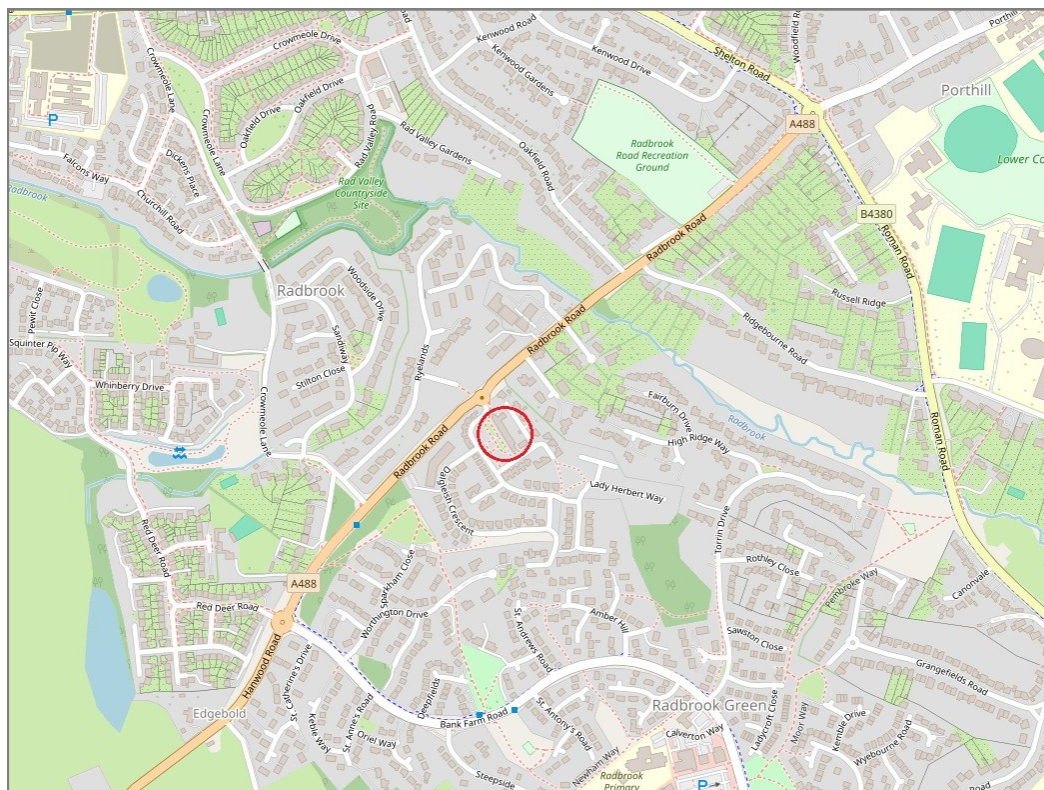
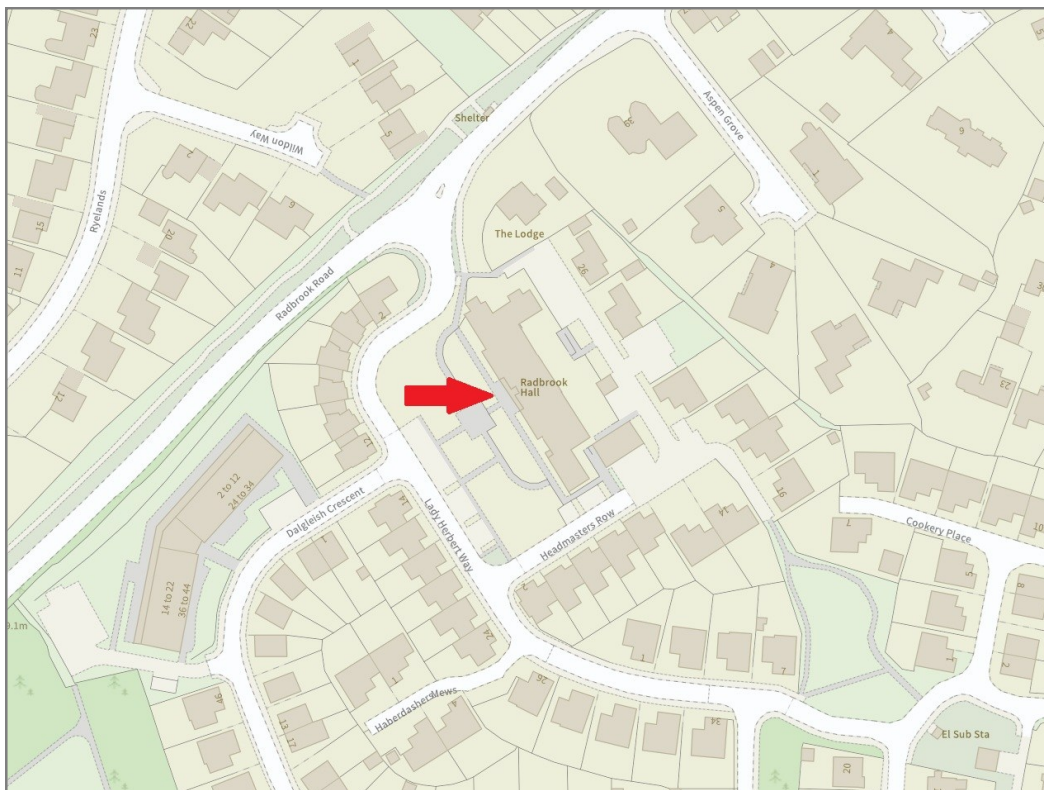
£300,000 Leasehold — 2 bedroom apartment

sales@cgpooks.co.uk

rightmove

onTheMarket.com

RICS
Regulated by RICS



BOUNDARIES NOT CONFIRMED

Local Authority	Shropshire Council
Council Tax	Band D
EPC Band	Band C
Services	All mains services are connected

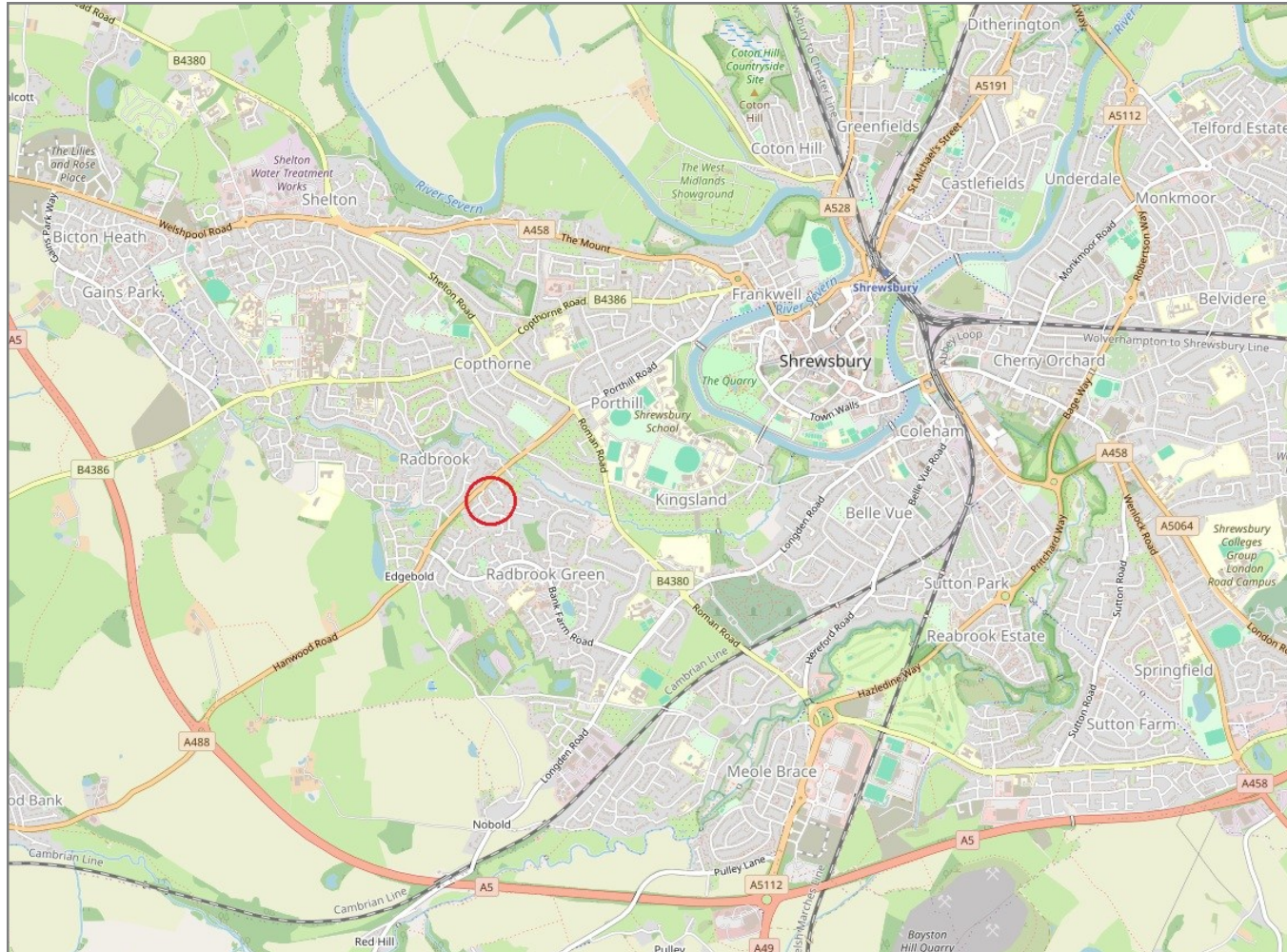
Tenure	Leasehold
Lease Length	125 years from 29/11/2019
Service Charge	£1,717.28 per annum
Ground Rent	Peppercorn

19 Radbrook Hall, Radbrook Village, Shrewsbury, SY3 9BY

Coopergreenpooks.co.uk

£300,000 Leasehold — 2 bedroom apartment

sales@cgpooks.co.uk



IMPORTANT NOTICE: Cooper Green Pooks for themselves and for the lessors or vendors of this property whose agents they are give notice that: 1 No appliances, services or service installations have been tested and no warranty as to suitability or serviceability is implied. Any prospective purchaser or lessee is advised to obtain verification from their surveyor or solicitor. 2. The particulars are set out as a general outline only for the guidance of the intended purchasers or lessees and do not constitute, nor constitute part of, an offer or contract. 3. All descriptions, reference to condition and necessary permissions for use and occupation and other details are given in good faith and are believed to be correct but any intending purchasers or lessees should not rely on them as statements or representation of fact but satisfy themselves by inspection or otherwise as to the correctness of each of them. 4. No person in the employment of Cooper Green Pooks has any authority to make or give any representation or warranty whatsoever in relation to this property. 5. All rentals and prices are quoted exclusive of Stamp Duty, legal and surveyors fees and any other associated purchasers or lessees costs. 6. Floor plans are indicative only and should not be relied on. 7. The plan showing the boundary of the property is indicative only and has not been checked against the legal title so should not be relied on. 8. All dimensions, floor areas and site areas are only approximate and should not be relied on. Dimensions are generally maximum room dimension.