



10, Nelson Street, Bengo
SG14 3AG
Guide Price £550,000



stevenoates.com



10 Nelson Street, Bengeo, Herts, SG14 3AG

A beautifully presented and thoughtfully extended two-bedroom Victorian character home, ideally situated in a highly sought-after location, conveniently positioned for Hertford Town's wide range of amenities and excellent transport links into London. This charming property is arranged over two floors and offers approximately 1035 sq ft of well-appointed accommodation. The ground floor features an inviting entrance hallway leading into a spacious living room, complete with an attractive exposed brick fireplace, which in turn opens into the dining room. The dining room also provides access to the modern fitted kitchen, finished to a high standard. On the first floor, there are two generously sized double bedrooms and a stylish four-piece family bathroom suite. Externally, the rear garden has been beautifully landscaped for low-maintenance living and further benefits from an outbuilding, currently utilised as a home office.

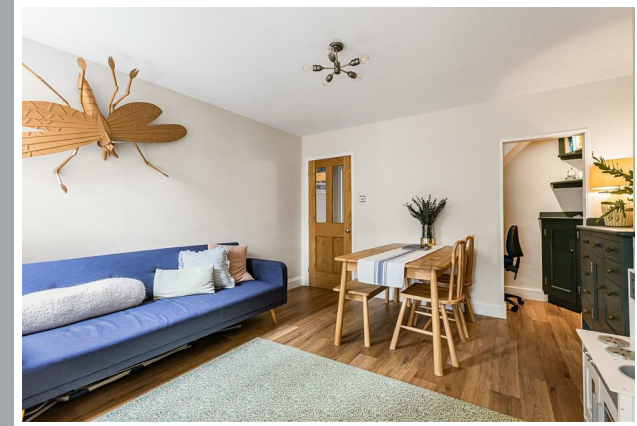
The property is located within the lower slopes of Bengeo within an attractive Victorian road with excellent access to Hertford North station which is just a few minutes away. Local schooling is excellent with popular Millmead Primary School only a short distance away.



70 Fore Street, Hertford, Hertfordshire, SG14 1BY



70 Fore Street, Hertford, Hertfordshire, SG14 1BY



70 Fore Street, Hertford, Hertfordshire, SG14 1BY

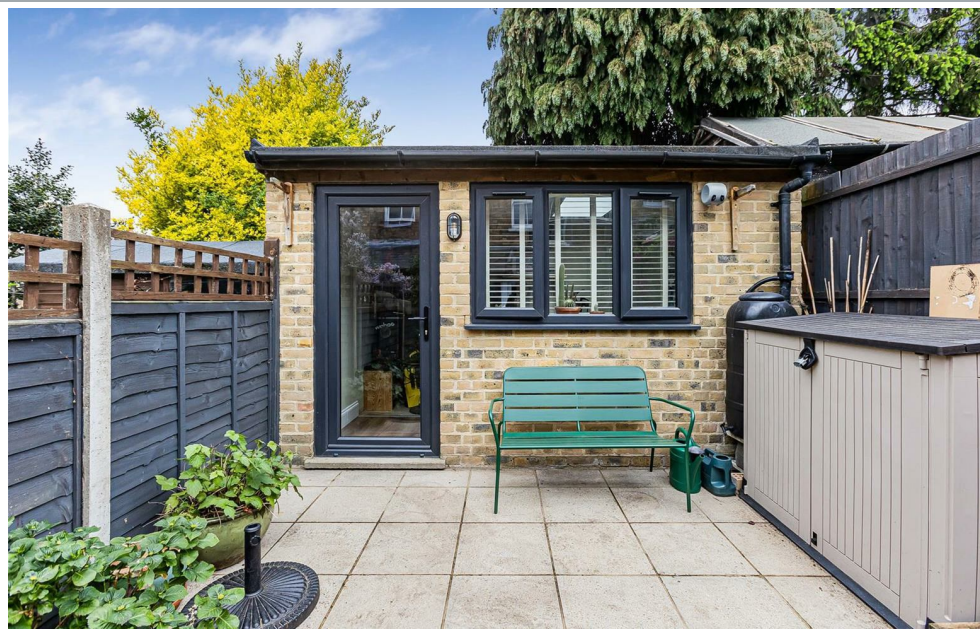




70 Fore Street, Hertford, Hertfordshire, SG14 1BY



70 Fore Street, Hertford, Hertfordshire, SG14 1BY



70 Fore Street, Hertford, Hertfordshire, SG14 1BY

**Approximate Gross Internal Area 1035 sq ft - 97 sq m
(Including Outbuilding)**

Ground Floor Area 504 sq ft – 47 sq m

First Floor Area 429 sq ft – 40 sq m

Outbuilding Area 102 sq ft – 10 sq m



Floor plan produced in accordance with RICS Property Measurement 2nd Edition. Although Pink Plan Ltd ensures the highest level of accuracy, measurements of doors, windows and rooms are approximate and no responsibility is taken for error, omission or misstatement. These plans are for representation purposes only and no guarantee is given on the total square footage of the property within this plan. The figure icon is for initial guidance only and should not be relied on as a basis of valuation.



These particulars, whilst believed to be accurate are set out as a general outline only for guidance and do not constitute any part of an offer or contract. Intending purchasers should not rely on them as statements of representation of fact, but must satisfy themselves by inspection or otherwise as to their accuracy. No person in this firm's employment has the authority to make or give any representation or warranty in respect of the property.

