

Owen Court, Sutton Coldfield

£125,000

🛏 2 🍳 1 🚿 1



Owen Court offers a reassuring step into retirement living within a friendly and well-established community. This highly sought-after and well-regarded development provides not just a new home, but a lifestyle too.

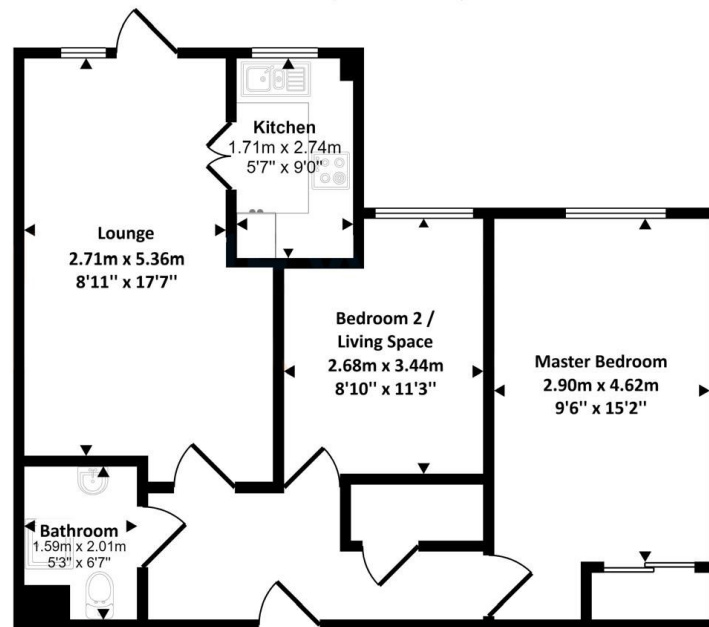
Located on the first floor (with lift), this bright and spacious apartment offers a generous lounge with views over the beautifully maintained communal gardens, a fitted kitchen with integrated appliances, two double bedrooms and a newly installed modern bathroom.

Residents benefit from a range of communal facilities including a welcoming lounge where regular social events and coffee mornings take place, along with a library, laundry room, guest suite and attractive communal gardens. The development also benefits from an on-site Development Manager, offering additional support and helping to maintain the strong community atmosphere.

Residency is restricted to those aged 60 and over, or couples where one partner is over 60 and the other over 55.

- Two-bedroom first floor retirement apartment
- Highly regarded Owen Court development
- Lounge and bedrooms overlooking communal gardens
- 24-hour Appello emergency call system
- Guest suite for visiting family and friends
- Lift access within development
- Friendly and well-established retirement community
- Newly fitted modern shower room
- On-site Development Manager (Mon - Fri)
- QUOTE REF: JP1511

Floorplan of Apartment 23, Owen Court 2-12, Hollyfield Road,
Sutton Coldfield, West Midlands, B75 7SG



Approx Gross Internal Area
60 sq m / 644 sq ft

This floor plan is provided for illustrative purposes only and is not drawn to scale. All measurements of rooms, doors, windows, and other features are approximate, and no liability is accepted for any inaccuracies, omissions, or misstatements. Fixtures and fittings shown, including bathroom suites, are for guidance only and may differ from the actual items.